



MLS 6773941 Residential

\$425,000

2,852 sq ft
5 bedrooms
3 baths

42810 County Highway 26
Rochert MN 56578

Status: Active

Description:

Escape to your own rural retreat with this beautiful log homestead nestled on 6 acres of serene, park-like land. Surrounded by mature trees and abundant wildlife—including deer, turkey, bear, and grouse—this property is a true outdoor enthusiast's dream. The main home features 4+ bedroom options, a walk-out basement, and beautiful custom oak kitchen cabinets. Relax or entertain on the spacious deck while taking in the peaceful views. Walkout basement includes a large bedroom area, bath and laundry room, utility room, and partial block basement. A charming 2-bedroom, 1-bath guest home (24x38) adds flexibility for visitors, extended family, or rental potential. (Guest home has a separate sewer system). The property also includes a detached garage and two large outbuildings, offering plenty of room for storage, hobbies, or workshop space. Outbuildings include: A 26x30 double stall detached log garage. 32x72 shed with a 32x48 insulated and heated shop area. A 42x44 steel sided cold storage building built in 2020. A 12x32 woodshed, 6x7 log outhouse, and a 10x12 storage shed. With a paved driveway and well-maintained grounds, the setting balances rustic character with practical convenience. Additional land is available for those seeking even more space and opportunity. (Up to 80 acres total available, ask for details). Located just 26 miles from Detroit Lakes and 24 miles from Park Rapids, this home is conveniently located near the Tamarac National Wildlife Refuge, Smoky Hills State Forest, and snowmobile trails. Whether you're seeking a full-time residence, vacation getaway, or multi-use homestead, this property offers the perfect blend of comfort, privacy, and natural beauty. Additional property information is available. Final acreage to be determined by survey.

Additional Details:

Year Built	1977
Lot Acres	6
Lot Dimensions	6 acres
Garage Stalls	2
School District	23
Taxes	\$3,738
Taxes with Assessments	\$3,738
Tax Year	2025

Additional Features:

Wood Heat: Baseboard, Forced Air, Fireplace(s)
Listed By: Counselor Realty Detroit Lakes



Affinity Real Estate Inc. participates in the Regional Multiple Listing Service of Minnesota, Inc Broker Reciprocity (sm) program, allowing us to display other broker's listings on our website. All properties are subject to prior sale, change or withdrawal.



Call Affinity Real Estate

218-237-3333

info@affinityrealestate.com

From Detroit Lakes go east on State Hwy 34 approx. 15.5 miles, turn left south then north on Co Hwy 37 (Shell Lake Rd) for 8 miles, turn left and head west on Becker County 26 and go 2 miles to the property and turn right on St Hwy 34 and follow the same directions



Affinity Real Estate - 600 Park Avenue South - Park Rapids MN 56470



website: www.AffinityRealEstate.com | email: info@affinityrealestate.com | office: 218-237-3333 | fax: 218-237-3377

Affinity
REAL ESTATE INC

\$425,000
MLS 6773941 Residential
42810 County Highway 26
Rochert MN 56578

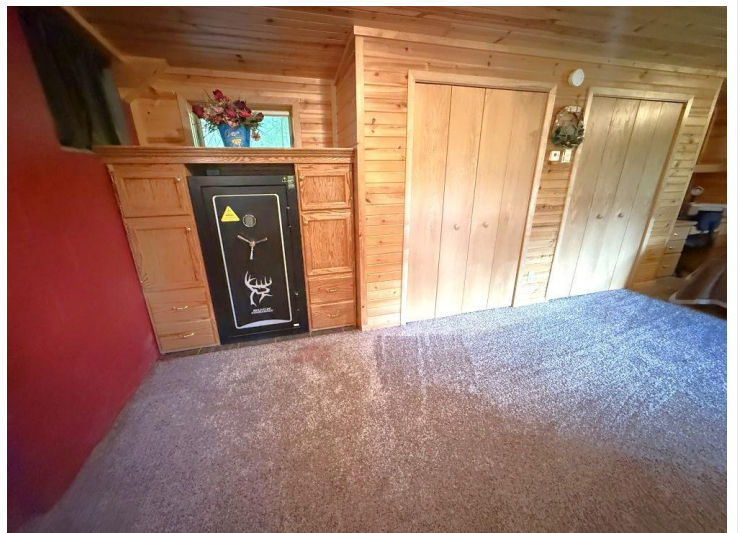
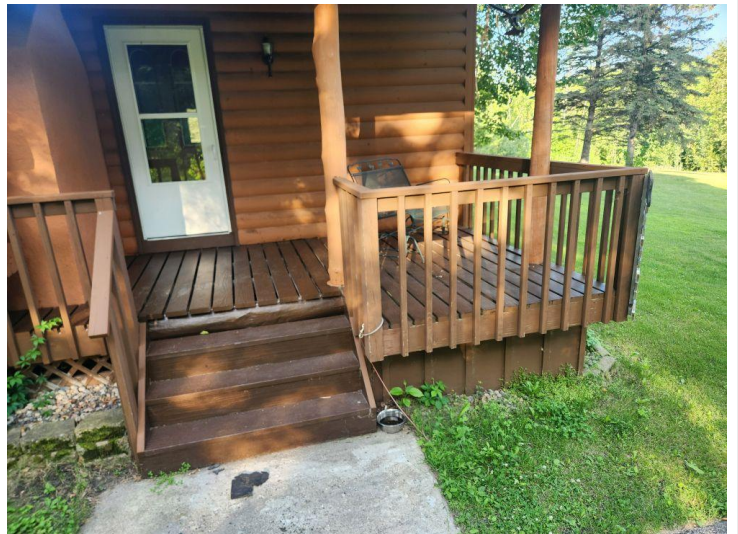


website: www.AffinityRealEstate.com | email: info@affinityrealestate.com | office: 218-237-3333 | fax: 218-237-3377



\$425,000

MLS 6773941 Residential
42810 County Highway 26
Rochert MN 56578



website: www.AffinityRealEstate.com | email: info@affinityrealestate.com | office: 218-237-3333 | fax: 218-237-3377



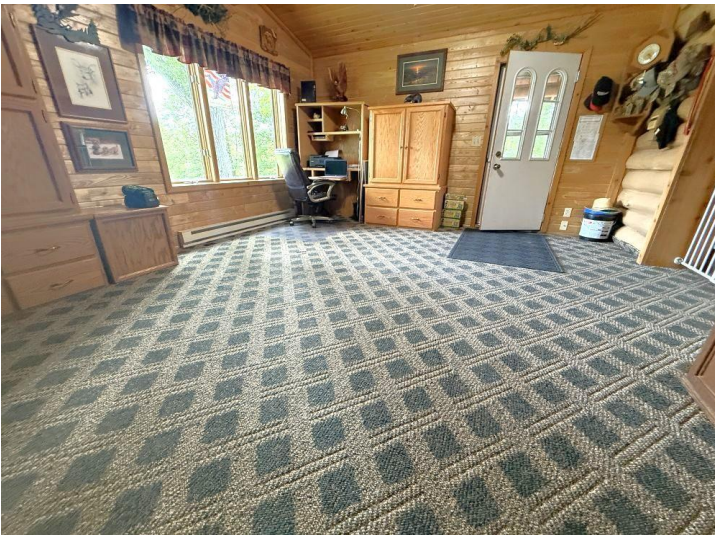
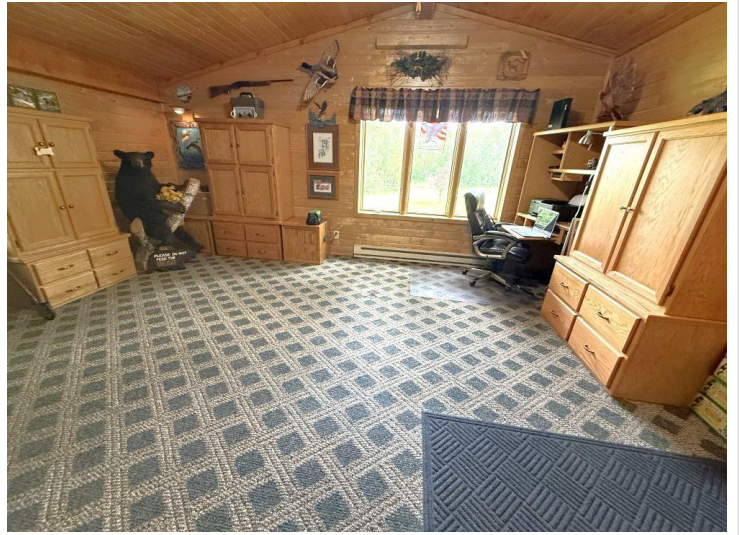
\$425,000
 MLS 6773941 Residential
 42810 County Highway 26
 Rochert MN 56578



website: www.AffinityRealEstate.com | email: info@affinityrealestate.com | office: 218-237-3333 | fax: 218-237-3377

Affinity
REAL ESTATE INC

\$425,000
MLS 6773941 Residential
42810 County Highway 26
Rochert MN 56578



website: www.AffinityRealEstate.com | email: info@affinityrealestate.com | office: 218-237-3333 | fax: 218-237-3377

Affinity
REAL ESTATE INC

\$425,000

MLS 6773941 Residential
42810 County Highway 26
Rochert MN 56578



website: www.AffinityRealEstate.com | email: info@affinityrealestate.com | office: 218-237-3333 | fax: 218-237-3377



\$425,000
 MLS 6773941 Residential
 42810 County Highway 26
 Rochert MN 56578



website: www.AffinityRealEstate.com | email: info@affinityrealestate.com | office: 218-237-3333 | fax: 218-237-3377

Affinity
REAL ESTATE INC

\$425,000
MLS 6773941 Residential
42810 County Highway 26
Rochert MN 56578



website: www.AffinityRealEstate.com | email: info@affinityrealestate.com | office: 218-237-3333 | fax: 218-237-3377



\$425,000
 MLS 6773941 Residential
 42810 County Highway 26
 Rochert MN 56578



website: www.AffinityRealEstate.com | email: info@affinityrealestate.com | office: 218-237-3333 | fax: 218-237-3377



\$425,000
 MLS 6773941 Residential
 42810 County Highway 26
 Rochert MN 56578