



MLS 6774030 Land

\$225,000

40.12 Acres
Raw Land

TBD 37th Avenue
Pequot Lakes MN 56472

Status: Active

Description:

Possibilities are endless with this gorgeous, 40 acre parcel located just west of Gull Lake. The property features nearly all high ground, roughly 20 acres of tillable land and 20 acres of mature forest. There's also a dug pond for livestock. This would be a fantastic property for building, farming, hunting, and food plots. Use your imagination! High speed internet is also available.

Additional Details:

Lot Acres	40.12
Lot Dimensions	1320x1320
School District	2174
Taxes	(unreported)
Taxes with Assessments	(unreported)
Tax Year	2025

Additional Features:

Driving Directions:

From the intersection of Hwy 371 and County Rd. 29 head west on County Rd. 29. At the stop sign on Hwy 1 go straight onto gravel. Turn right on 37th Ave. SW to property on right.



Listed By:
Positive Realty

Affinity Real Estate Inc. participates in the Regional Multiple Listing Service of Minnesota, Inc Broker Reciprocity (sm) program, allowing us to display other broker's listings on our website. All properties are subject to prior sale, change or withdrawal.



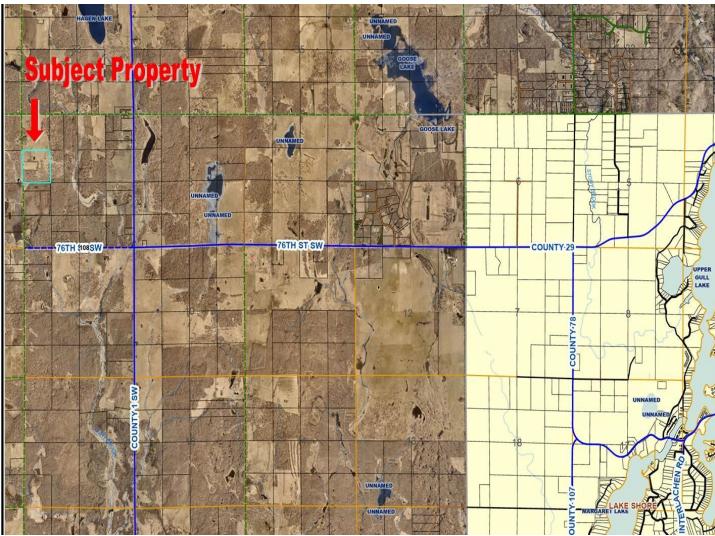
Call Affinity Real Estate

218-237-3333

info@affinityrealestate.com



Affinity Real Estate - 600 Park Avenue South - Park Rapids MN 56470



website: www.AffinityRealEstate.com | email: info@affinityrealestate.com | office: 218-237-3333 | fax: 218-237-3377



\$225,000
 MLS 6774030 Land
 TBD 37th Avenue
 Pequot Lakes MN 56472



website: www.AffinityRealEstate.com | email: info@affinityrealestate.com | office: 218-237-3333 | fax: 218-237-3377



\$225,000
 MLS 6774030 Land
 TBD 37th Avenue
 Pequot Lakes MN 56472



website: www.AffinityRealEstate.com | email: info@affinityrealestate.com | office: 218-237-3333 | fax:218-237-3377



\$225,000
MLS 6774030 Land
TBD 37th Avenue
Pequot Lakes MN 56472