



MLS 6774360 Lake Home

\$599,900

1,895 sq ft
4 bedrooms
2 baths

10687 Graff Park Road
Brainerd MN 56401

Waterfront: Upper South Long

Status: Pending

Description:

Beautiful park-like setting, flat elevation, sand beach, and beautiful sunsets - sounds about perfect, right? Well, you will find all of this and more in this charming 4 bedroom 2 bath Upper South Long Lake home. The main level features; vaulted ceilings, fireplace, dining room, full bath and 2 bedrooms. The adorable bunk house is complete with 4 built-in bunks. The walk-out lower level includes; a family room with fireplace, wet bar area, 2 bedrooms (4th bedroom does not have egress window) laundry/utility room. Enjoy lake views from the deck, the patio, while lounging in a chair by the fire pit at the waters edge, or while sitting on the bench at the end of the dock - nice! Property is being sold turn-key. See list of included property. You will fall in love with this special spot on Upper South Long Lake!

Additional Details:

Year Built	1974
Lot Acres	0.52
Lot Dimensions	100x210x100x228
Garage Stalls	1
School District	181
Taxes	\$2,810
Taxes with Assessments	\$2,960
Tax Year	2025

Additional Features:

Fuel: Electric **Heat:** Baseboard, Fireplace(s)

Driving Directions:

From Brainerd - East on County Rd 18 to right on County Rd 23 to left of County Rd 24 to right on right on Leisure Ln to right on Graff Rd to home on right.



Listed By:
Kurilla Real Estate LTD

Affinity Real Estate Inc. participates in the Regional Multiple Listing Service of Minnesota, Inc Broker Reciprocity (sm) program, allowing us to display other broker's listings on our website. All properties are subject to prior sale, change or withdrawal.



Call Affinity Real Estate

218-237-3333

info@affinityrealestate.com



Affinity Real Estate - 600 Park Avenue South - Park Rapids MN 56470



website: www.AffinityRealEstate.com | email: info@affinityrealestate.com | office: 218-237-3333 | fax: 218-237-3377

Affinity
REAL ESTATE INC

\$599,900

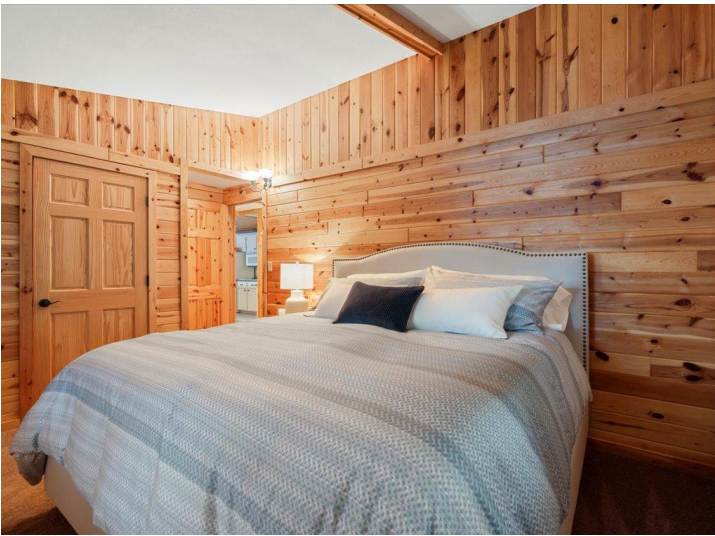
MLS 6774360 Lake Home
10687 Graff Park Road
Brainerd MN 56401



website: www.AffinityRealEstate.com | email: info@affinityrealestate.com | office: 218-237-3333 | fax: 218-237-3377

Affinity
REAL ESTATE INC

\$599,900
MLS 6774360 Lake Home
10687 Graff Park Road
Brainerd MN 56401



website: www.AffinityRealEstate.com | email: info@affinityrealestate.com | office: 218-237-3333 | fax: 218-237-3377

Affinity
REAL ESTATE INC

\$599,900
MLS 6774360 Lake Home
10687 Graff Park Road
Brainerd MN 56401



website: www.AffinityRealEstate.com | email: info@affinityrealestate.com | office: 218-237-3333 | fax: 218-237-3377

Affinity
REAL ESTATE INC

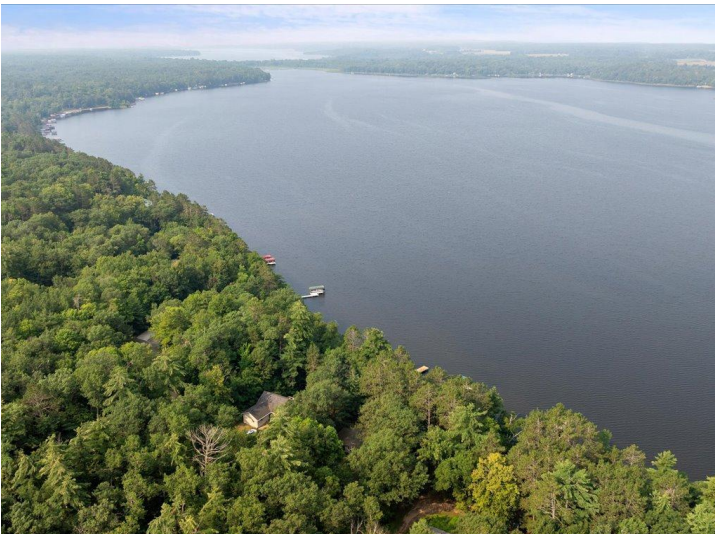
\$599,900
MLS 6774360 Lake Home
10687 Graff Park Road
Brainerd MN 56401



website: www.AffinityRealEstate.com | email: info@affinityrealestate.com | office: 218-237-3333 | fax: 218-237-3377



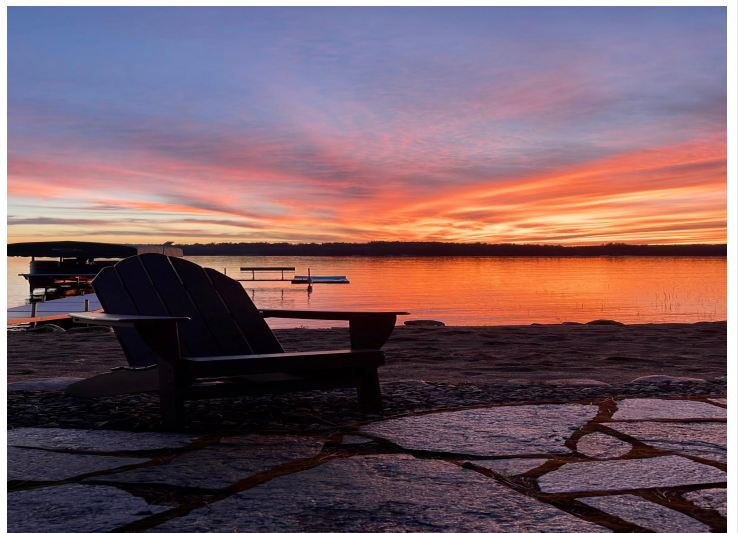
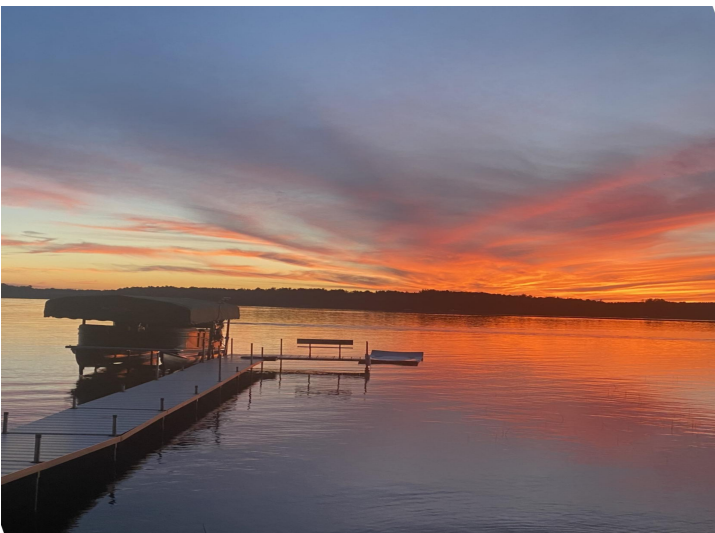
\$599,900
MLS 6774360 Lake Home
10687 Graff Park Road
Brainerd MN 56401



website: www.AffinityRealEstate.com | email: info@affinityrealestate.com | office: 218-237-3333 | fax: 218-237-3377

Affinity
REAL ESTATE INC

\$599,900
MLS 6774360 Lake Home
10687 Graff Park Road
Brainerd MN 56401



website: www.AffinityRealEstate.com | email: info@affinityrealestate.com | office: 218-237-3333 | fax: 218-237-3377



\$599,900
 MLS 6774360 Lake Home
 10687 Graff Park Road
 Brainerd MN 56401



website: www.AffinityRealEstate.com | email: info@affinityrealestate.com | office: 218-237-3333 | fax:218-237-3377



\$599,900

MLS 6774360 Lake Home
10687 Graff Park Road
Brainerd MN 56401