



MLS 6774402 Residential

\$379,900

3,736 sq ft
6 bedrooms
4 baths

345 River Drive
Park Rapids MN 56470

Status: Active

Description:

Duplex located in the City of Park Rapids – Hard to find property that has two units, and each unit has three bedrooms, two baths, main level laundry, finished lower level with large family room, own private deck and single attached garage. Many upgrades within the last 10 years include a replaced roof, decks, furnaces, water heaters, flooring and so much more. Even though this property is within the city limits, it gives you a country feeling with .75 acre that is nicely wooded and fenced along with a detached 14 x 24 garage for your extras. Perfect property for the family that wants to be together but have their own living space! \$379,900.

Additional Details:

Year Built	1994
Lot Acres	0.75
Lot Dimensions	123x264
Garage Stalls	3
School District	309
Taxes	\$3,564
Taxes with Assessments	\$4,006
Tax Year	2025

Additional Features:

Fuel: Natural Gas **Heat:** Forced Air

Driving Directions:

From 71/34 Stoplights head East on Hwy 34 and turn Left on Central Avenue. Continue North and turn left on East River Drive, proceed approximately 1/2 mile and the property will be on the right.



Listed By:
Affinity Real Estate Inc.

Affinity Real Estate Inc. participates in the Regional Multiple Listing Service of Minnesota, Inc Broker Reciprocity (sm) program, allowing us to display other broker's listings on our website. All properties are subject to prior sale, change or withdrawal.



Call Affinity Real Estate

218-237-3333

info@affinityrealestate.com



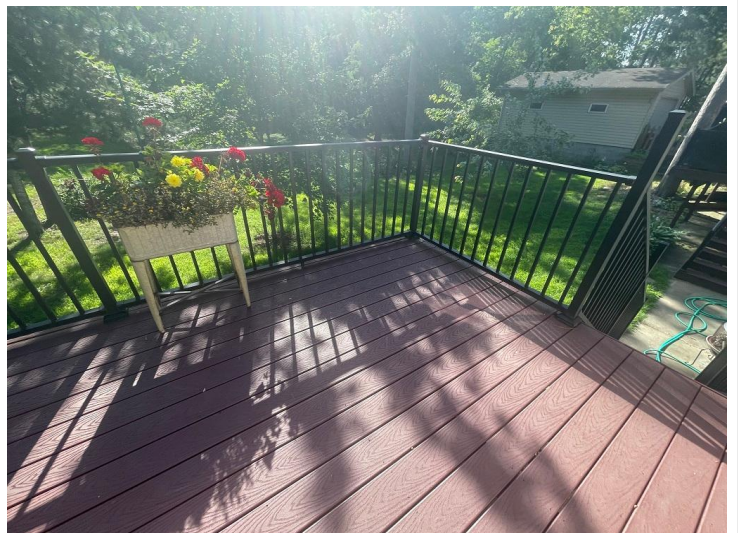
Affinity Real Estate - 600 Park Avenue South - Park Rapids MN 56470



website: www.AffinityRealEstate.com | email: info@affinityrealestate.com | office: 218-237-3333 | fax: 218-237-3377

Affinity
REAL ESTATE INC

\$379,900
MLS 6774402 Residential
345 River Drive
Park Rapids MN 56470



website: www.AffinityRealEstate.com | email: info@affinityrealestate.com | office: 218-237-3333 | fax: 218-237-3377



\$379,900
 MLS 6774402 Residential
 345 River Drive
 Park Rapids MN 56470



website: www.AffinityRealEstate.com | email: info@affinityrealestate.com | office: 218-237-3333 | fax: 218-237-3377



\$379,900
MLS 6774402 Residential
345 River Drive
Park Rapids MN 56470



website: www.AffinityRealEstate.com | email: info@affinityrealestate.com | office: 218-237-3333 | fax: 218-237-3377



\$379,900
 MLS 6774402 Residential
 345 River Drive
 Park Rapids MN 56470



website: www.AffinityRealEstate.com | email: info@affinityrealestate.com | office: 218-237-3333 | fax: 218-237-3377

Affinity
REAL ESTATE INC

\$379,900
MLS 6774402 Residential
345 River Drive
Park Rapids MN 56470



website: www.AffinityRealEstate.com | email: info@affinityrealestate.com | office: 218-237-3333 | fax: 218-237-3377

Affinity
REAL ESTATE INC

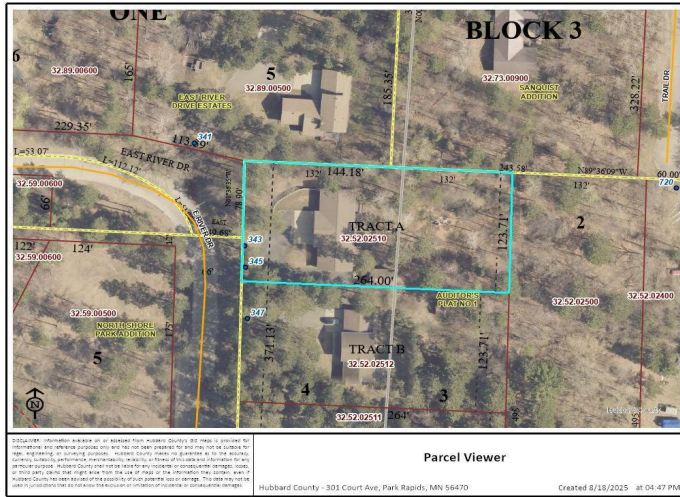
\$379,900
MLS 6774402 Residential
345 River Drive
Park Rapids MN 56470



website: www.AffinityRealEstate.com | email: info@affinityrealestate.com | office: 218-237-3333 | fax: 218-237-3377



\$379,900
MLS 6774402 Residential
345 River Drive
Park Rapids MN 56470



website: www.AffinityRealEstate.com | email: info@affinityrealestate.com | office: 218-237-3333 | fax:218-237-3377



\$379,900
MLS 6774402 Residential
345 River Drive
Park Rapids MN 56470