



MLS 6775017 Residential

**\$284,000**

1,380 sq ft  
2 bedrooms  
1 baths

37276 Willow Road  
Laporte MN 56461

Status: Active

**Description:**

Charming -bedroom home on nearly 7 acres in Laporte, MN. This is being sold "AS IS" Experience peaceful country living with this delightful 2 bedroom, 1 bath home set on just under 7 acres. The main level features updated flooring along with freshly painted walls and ceilings from a few years ago, creating a cozy and inviting atmosphere. Step outside to a beautiful yard with plenty of space for gardening, entertaining, or simply relaxing in the fresh air. A spacious 3 stall garage and additional storage shed provide ample room for vehicles, tools, and hobbies. The unfinished basement is a blank canvas, ready for you to design and finish to suite your lifestyle. A great opportunity for those ready to add their personal touch.

**Additional Details:**

Year Built	1987
Lot Acres	6.66
Lot Dimensions	434x656x433x659
Garage Stalls	3
School District	306
Taxes	\$1,616
Taxes with Assessments	\$1,616
Tax Year	2025

**Additional Features:**

**Fuel:** Propane **Heat:** Forced Air, Wood Stove

**Driving Directions:**

From Brainerd: Head Northon MN 371N 46 miles, left onto Whipple Ave for 400 feet, right onto 1st St S for 0.4 miles slight left onto MN 371N for 8.4 miles left onto MN 200 W/MN 371 N for 6.9 miles, left onto Co Hwy 38 for 4.5 miles left onto Co Hwy 39 for 5.9 miles left on N Willow Rd 0.4 on right



Listed By:  
Century 21 Atwood

Affinity Real Estate Inc. participates in the Regional Multiple Listing Service of Minnesota, Inc Broker Reciprocity (sm) program, allowing us to display other broker's listings on our website. All properties are subject to prior sale, change or withdrawal.



**Call Affinity Real Estate**

**218-237-3333**

**info@affinityrealestate.com**



**Affinity Real Estate - 600 Park Avenue South - Park Rapids MN 56470**



website: [www.AffinityRealEstate.com](http://www.AffinityRealEstate.com) | email: [info@affinityrealestate.com](mailto:info@affinityrealestate.com) | office: 218-237-3333 | fax: 218-237-3377



**\$284,000**  
 MLS 6775017 Residential  
 37276 Willow Road  
 Laporte MN 56461



website: [www.AffinityRealEstate.com](http://www.AffinityRealEstate.com) | email: [info@affinityrealestate.com](mailto:info@affinityrealestate.com) | office: 218-237-3333 | fax: 218-237-3377



**\$284,000**  
MLS 6775017 Residential  
37276 Willow Road  
Laporte MN 56461



website: [www.AffinityRealEstate.com](http://www.AffinityRealEstate.com) | email: [info@affinityrealestate.com](mailto:info@affinityrealestate.com) | office: 218-237-3333 | fax: 218-237-3377



**\$284,000**  
 MLS 6775017 Residential  
 37276 Willow Road  
 Laporte MN 56461



website: [www.AffinityRealEstate.com](http://www.AffinityRealEstate.com) | email: [info@affinityrealestate.com](mailto:info@affinityrealestate.com) | office: 218-237-3333 | fax: 218-237-3377

**Affinity**  
REAL ESTATE INC

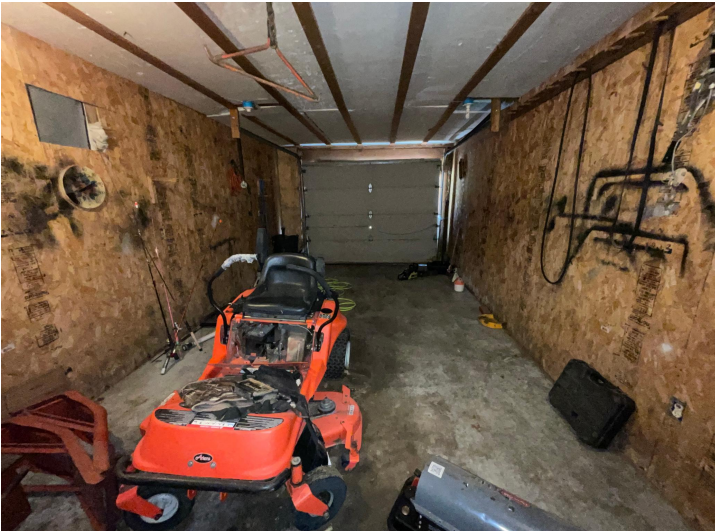
**\$284,000**  
MLS 6775017 Residential  
37276 Willow Road  
Laporte MN 56461



website: [www.AffinityRealEstate.com](http://www.AffinityRealEstate.com) | email: [info@affinityrealestate.com](mailto:info@affinityrealestate.com) | office: 218-237-3333 | fax: 218-237-3377



**\$284,000**  
 MLS 6775017 Residential  
 37276 Willow Road  
 Laporte MN 56461



website: [www.AffinityRealEstate.com](http://www.AffinityRealEstate.com) | email: [info@affinityrealestate.com](mailto:info@affinityrealestate.com) | office: 218-237-3333 | fax: 218-237-3377



**\$284,000**  
 MLS 6775017 Residential  
 37276 Willow Road  
 Laporte MN 56461



website: [www.AffinityRealEstate.com](http://www.AffinityRealEstate.com) | email: [info@affinityrealestate.com](mailto:info@affinityrealestate.com) | office: 218-237-3333 | fax: 218-237-3377

**Affinity**  
REAL ESTATE INC

**\$284,000**  
MLS 6775017 Residential  
37276 Willow Road  
Laporte MN 56461



website: [www.AffinityRealEstate.com](http://www.AffinityRealEstate.com) | email: [info@affinityrealestate.com](mailto:info@affinityrealestate.com) | office: 218-237-3333 | fax:218-237-3377



**\$284,000**  
MLS 6775017 Residential  
37276 Willow Road  
Laporte MN 56461