



MLS 6775380 Land

**\$295,000**

78.73 Acres  
Raw Land

17279 284th St  
Sebeka MN 56477

Status: Pending

**Description:**

**78 ACRES OF PRIME HUNTING LAND!** Just 5 minutes East of Sebeka, this diverse property offers the Perfect Blend of Hunting, Recreation, and Build Potential.

With a mix of Wooded Cover, Open Pasture, and a natural Water Source, it checks all the boxes for an Outdoorsman or anyone looking for a Private Retreat. The land is thoughtfully divided, featuring 18 Acres of Tillable Pasture that could serve as a prime Food Plot, 9 more Acres of Open Pasture & Trails, and approximately 50 Acres of Mature Woods.

The Red Eye River flows along the southern end, providing a year-round Water Source and enhancing the natural Habitat. This combination of natural Corridors, River Frontage, and a ready-to-go Food Plot makes this tract a true Hunter's Paradise.

Beyond its hunting appeal, the property is Buildable, with a 24x35 Utility Building already on site, perfect for immediate Storage needs or ready to be transformed into a Hunting Cabin/Basecamp. Whether you're searching for a Productive Hunting Property, a Secluded Build Site, or a mix of both, This Tract Delivers!

**Additional Details:**

Lot Acres	78.73
Lot Dimensions	1,355 x 2,500 +/-
School District	2285
Taxes	\$974
Taxes with Assessments	\$974
Tax Year	2025

**Additional Features:**

**Driving Directions:**

From Sebeka, head East on 280th St / Co Hwy 12. After 3.4 Miles, turn left onto Hubbard Rd. Continue until 284th St, then turn right. The property will be the second approach on the right side.



Listed By:  
Jack Chivers Realty

Affinity Real Estate Inc. participates in the Regional Multiple Listing Service of Minnesota, Inc Broker Reciprocity (sm) program, allowing us to display other broker's listings on our website. All properties are subject to prior sale, change or withdrawal.



**Call Affinity Real Estate**

**218-237-3333**

**info@affinityrealestate.com**



**Affinity Real Estate - 600 Park Avenue South - Park Rapids MN 56470**



website: [www.AffinityRealEstate.com](http://www.AffinityRealEstate.com) | email: [info@affinityrealestate.com](mailto:info@affinityrealestate.com) | office: 218-237-3333 | fax: 218-237-3377



**\$295,000**  
 MLS 6775380 Land  
 17279 284th St  
 Sebeka MN 56477



website: [www.AffinityRealEstate.com](http://www.AffinityRealEstate.com) | email: [info@affinityrealestate.com](mailto:info@affinityrealestate.com) | office: 218-237-3333 | fax: 218-237-3377



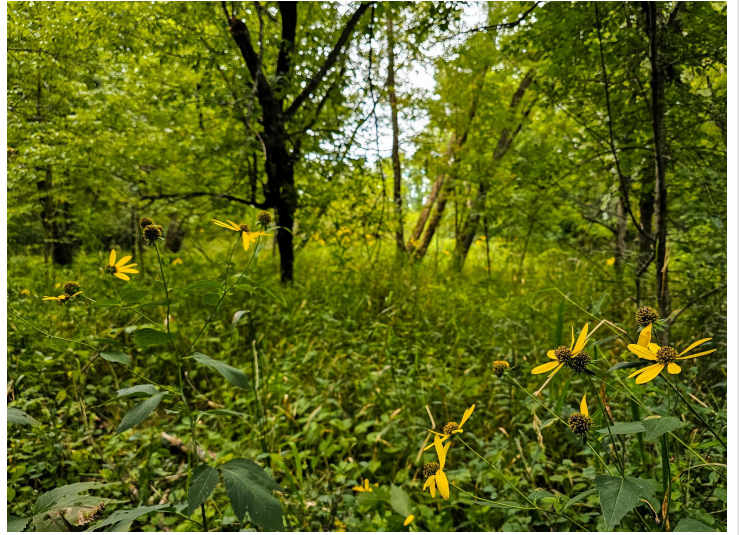
**\$295,000**  
 MLS 6775380 Land  
 17279 284th St  
 Sebeka MN 56477



website: [www.AffinityRealEstate.com](http://www.AffinityRealEstate.com) | email: [info@affinityrealestate.com](mailto:info@affinityrealestate.com) | office: 218-237-3333 | fax: 218-237-3377



**\$295,000**  
 MLS 6775380 Land  
 17279 284th St  
 Sebeka MN 56477



website: [www.AffinityRealEstate.com](http://www.AffinityRealEstate.com) | email: [info@affinityrealestate.com](mailto:info@affinityrealestate.com) | office: 218-237-3333 | fax: 218-237-3377



**\$295,000**  
MLS 6775380 Land  
17279 284th St  
Sebeka MN 56477