



MLS 6775692 Commercial

\$500,000

511 3rd Street
Bemidji MN 56601

Status: Active

Description:

Over 13,000sf of combined office/warehouse space in downtown Bemidji. 9000+sf warehouse with access off alley, 19' ceiling height with a floor drain down center. Single garage door, 14hx16w. 1600+sf office space in front with full 2400sf mezzanine above. Steel post/frame building. Note: Seller requires up to 12 mo lease back with any sale.

Additional Details:

Year Built	1987
Lot Acres	0.33
Lot Dimensions	100 x 144
Garage Stalls	1
School District	31
Taxes	\$172
Taxes with Assessments	\$172
Tax Year	2025

Additional Features:

Fuel: Electric, Natural Gas **Garage:** 1 **Heat:** Radiant **Sewer:** City Sewer/Connected **Water:** City Water/Connected **Air Conditioning:** Window Unit(s)

Driving Directions:

From 3rd Street and Bemidji Avenue, West on 3rd Street to property on right. Behind Bemidji Woolen Mills and across from Grandma's Attic.



Listed By:
Lake-N-Woods Realty

Affinity Real Estate Inc. participates in the Regional Multiple Listing Service of Minnesota, Inc Broker Reciprocity (sm) program, allowing us to display other broker's listings on our website. All properties are subject to prior sale, change or withdrawal.



Call Affinity Real Estate

218-237-3333

info@affinityrealestate.com



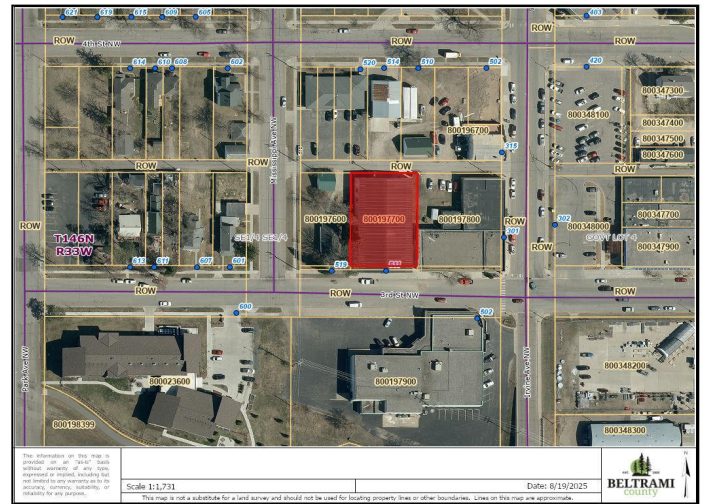
Affinity Real Estate - 600 Park Avenue South - Park Rapids MN 56470



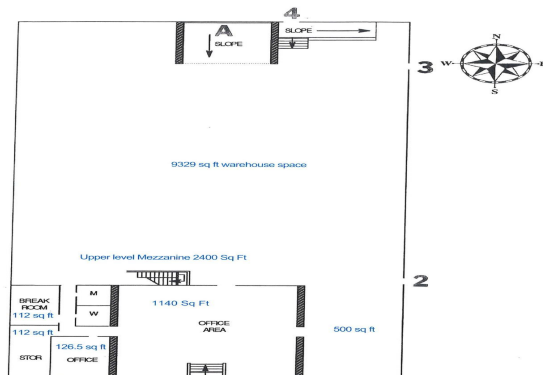
website: www.AffinityRealEstate.com | email: info@affinityrealestate.com | office: 218-237-3333 | fax: 218-237-3377



\$500,000
 MLS 6775692 Commercial
 511 3rd Street
 Bemidji MN 56601



WAREHOUSE
 Bemidji Area Schools
 511 3rd St NW, Bemidji, MN



website: www.AffinityRealEstate.com | email: info@affinityrealestate.com | office: 218-237-3333 | fax: 218-237-3377



\$500,000
 MLS 6775692 Commercial
 511 3rd Street
 Bemidji MN 56601