



MLS 6775701 Residential

\$129,900

822 sq ft
3 bedrooms
1 baths

1103 Dewey Avenue
Bemidji MN 56601

Status: Active

Description:

Great in-town home just south of BSU and a block from Lake Bemidji! All the conveniences on the main floor! 3-bedroom 3/4 bath with laundry room, includes central air and high efficiency natural gas furnace, includes all appliances, hardwood floor, and off-street parking off the alley.

Additional Details:

Year Built	1910
Lot Acres	0.07
Lot Dimensions	25x120
School District	31
Taxes	\$1,516
Taxes with Assessments	\$1,516
Tax Year	2025

Additional Features:

Basement: Partial, Concrete **Fuel:** Electric, Natural Gas **Heat:** Forced Air **Sewer:** City Sewer/Connected **Water:** City Water/Connected **Air Conditioning:** Central Air

Driving Directions:

Birchmont Dr just south of BSU, east on 12th St NE to Dewey Ave, south to home on the right.



Listed By:
Realty Experts, LLC

Affinity Real Estate Inc. participates in the Regional Multiple Listing Service of Minnesota, Inc Broker Reciprocity (sm) program, allowing us to display other broker's listings on our website. All properties are subject to prior sale, change or withdrawal.



Call Affinity Real Estate
218-237-3333
info@affinityrealestate.com



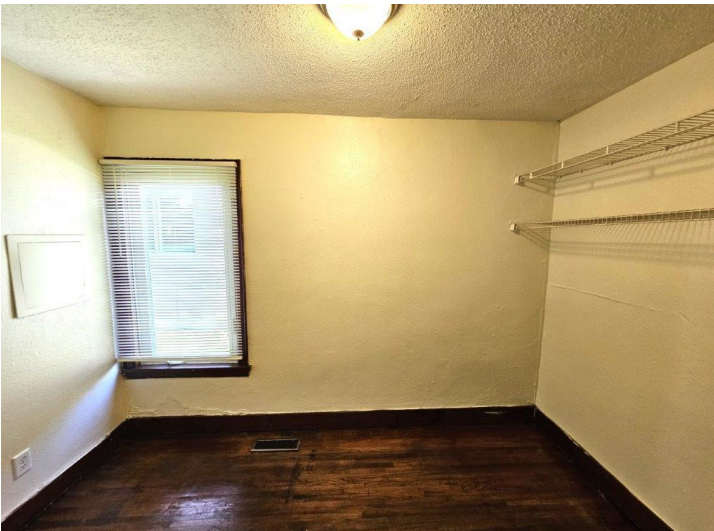
Affinity Real Estate - 600 Park Avenue South - Park Rapids MN 56470



website: www.AffinityRealEstate.com | email: info@affinityrealestate.com | office: 218-237-3333 | fax: 218-237-3377

Affinity
REAL ESTATE INC

\$129,900
MLS 6775701 Residential
1103 Dewey Avenue
Bemidji MN 56601



website: www.AffinityRealEstate.com | email: info@affinityrealestate.com | office: 218-237-3333 | fax: 218-237-3377



\$129,900
 MLS 6775701 Residential
 1103 Dewey Avenue
 Bemidji MN 56601



website: www.AffinityRealEstate.com | email: info@affinityrealestate.com | office: 218-237-3333 | fax: 218-237-3377

Affinity
REAL ESTATE INC

\$129,900
MLS 6775701 Residential
1103 Dewey Avenue
Bemidji MN 56601