



MLS 6775727 Residential

**\$499,900**

1,944 sq ft  
3 bedrooms  
3 baths

TBD Park Drive  
Menahga MN 56464

Status: Active

**Description:**

Don't miss this under construction, 3 bedroom, 3 bath golf course home located in the prestigious Blueberry Pines Estates. Home features main floor living at it's finest, including custom cabinetry, quartz counter tops, custom lighting, large pantry, solid doors, gas fireplace, a nice open floor plan, main floor laundry, all three bedrooms are ensuites, a large attached three car garage and so much more. Enjoy the restaurant and private clubhouse. Set up a showing today.

**Additional Details:**

Year Built	2025
Lot Acres	0.13
Lot Dimensions	75x75
Garage Stalls	3
School District	821
Taxes	\$36
Taxes with Assessments	\$36
Tax Year	2025

**Additional Features:**

**Fuel:** Natural Gas **Heat:** Forced Air

**Driving Directions:**

Blueberry Pine Estates are one approach north of Blueberry Pines Golf Course off US Hwy 71, turn on Blueberry Loop, Turn Right on Park Drive, to home on Left.



Listed By:  
eXp Realty

Affinity Real Estate Inc. participates in the Regional Multiple Listing Service of Minnesota, Inc Broker Reciprocity (sm) program, allowing us to display other broker's listings on our website. All properties are subject to prior sale, change or withdrawal.



**Call Affinity Real Estate**

**218-237-3333**

**info@affinityrealestate.com**



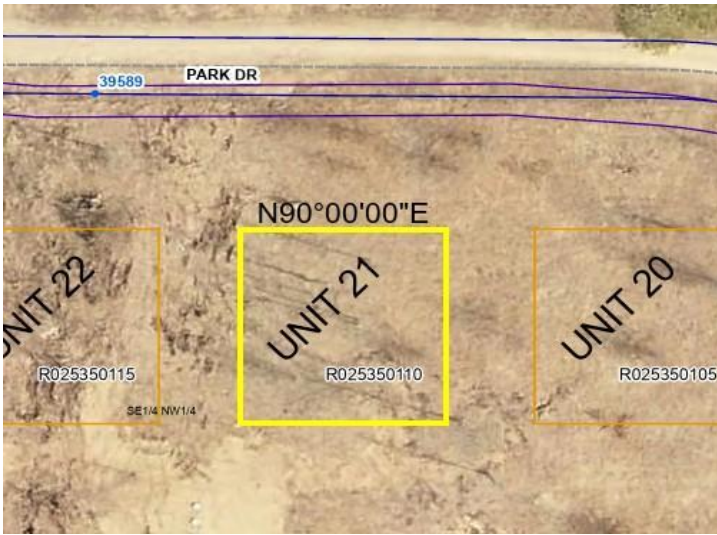
**Affinity Real Estate - 600 Park Avenue South - Park Rapids MN 56470**



website: [www.AffinityRealEstate.com](http://www.AffinityRealEstate.com) | email: [info@affinityrealestate.com](mailto:info@affinityrealestate.com) | office: 218-237-3333 | fax: 218-237-3377



**\$499,900**  
MLS 6775727 Residential  
TBD Park Drive  
Menahga MN 56464



website: [www.AffinityRealEstate.com](http://www.AffinityRealEstate.com) | email: [info@affinityrealestate.com](mailto:info@affinityrealestate.com) | office: 218-237-3333 | fax:218-237-3377



**\$499,900**  
MLS 6775727 Residential  
TBD Park Drive  
Menahga MN 56464

website: [www.AffinityRealEstate.com](http://www.AffinityRealEstate.com) | email: [info@affinityrealestate.com](mailto:info@affinityrealestate.com) | office: 218-237-3333 | fax:218-237-3377



**\$499,900**

MLS 6775727 Residential  
TBD Park Drive  
Menahga MN 56464

website: [www.AffinityRealEstate.com](http://www.AffinityRealEstate.com) | email: [info@affinityrealestate.com](mailto:info@affinityrealestate.com) | office: 218-237-3333 | fax:218-237-3377



**\$499,900**  
MLS 6775727 Residential  
TBD Park Drive  
Menahga MN 56464

website: [www.AffinityRealEstate.com](http://www.AffinityRealEstate.com) | email: [info@affinityrealestate.com](mailto:info@affinityrealestate.com) | office: 218-237-3333 | fax:218-237-3377



**\$499,900**

MLS 6775727 Residential  
TBD Park Drive  
Menahga MN 56464

website: [www.AffinityRealEstate.com](http://www.AffinityRealEstate.com) | email: [info@affinityrealestate.com](mailto:info@affinityrealestate.com) | office: 218-237-3333 | fax:218-237-3377



**\$499,900**

MLS 6775727 Residential  
TBD Park Drive  
Menahga MN 56464

website: [www.AffinityRealEstate.com](http://www.AffinityRealEstate.com) | email: [info@affinityrealestate.com](mailto:info@affinityrealestate.com) | office: 218-237-3333 | fax:218-237-3377



**\$499,900**  
MLS 6775727 Residential  
TBD Park Drive  
Menahga MN 56464

website: [www.AffinityRealEstate.com](http://www.AffinityRealEstate.com) | email: [info@affinityrealestate.com](mailto:info@affinityrealestate.com) | office: 218-237-3333 | fax:218-237-3377



**\$499,900**  
MLS 6775727 Residential  
TBD Park Drive  
Menahga MN 56464

website: [www.AffinityRealEstate.com](http://www.AffinityRealEstate.com) | email: [info@affinityrealestate.com](mailto:info@affinityrealestate.com) | office: 218-237-3333 | fax:218-237-3377



**\$499,900**  
MLS 6775727 Residential  
TBD Park Drive  
Menahga MN 56464

website: [www.AffinityRealEstate.com](http://www.AffinityRealEstate.com) | email: [info@affinityrealestate.com](mailto:info@affinityrealestate.com) | office: 218-237-3333 | fax:218-237-3377



**\$499,900**  
MLS 6775727 Residential  
TBD Park Drive  
Menahga MN 56464