



MLS 6775891 Residential

\$259,900

1,474 sq ft
3 bedrooms
2 baths

2098 Isleview Road
Grand Rapids MN 55744

Status: Active

Description:

In-Town Convenience Meets a Private Country Feel

This move-in ready 3-bedroom, 1.5-bath home sits on over 2 acres at the corner of Isleview Road and Reserve Drive, offering the rare combination of space, privacy, and location. With a newer kitchen, bathroom, plumbing, electrical, and flooring already in place, the home has been well maintained and thoughtfully updated over time. Recent improvements include a brand new roof, giving peace of mind for years to come.

Out back, enjoy a spacious and private yard with a fire pit area perfect for gatherings. The oversized metal building provides ample room for vehicles, toys, or workshop space, ideal for anyone needing both function and flexibility.

Whether you're looking to stretch out a bit or just want that peaceful edge-of-town lifestyle, this property checks all the boxes.

Additional Details:

Year Built	1956
Lot Acres	2.16
Lot Dimensions	435x217
Garage Stalls	4
School District	318
Taxes	\$2,133
Taxes with Assessments	\$2,178
Tax Year	2024

Additional Features:

Basement: Full, Walkout **Fuel:** Natural Gas **Garage:** 4 **Heat:** Forced Air **Sewer:** Tank with Drainage Field **Water:** Well **Air Conditioning:** Window Unit(s)

Driving Directions:

Down Isleview on the Right.



Listed By:
eXp Realty

Affinity Real Estate Inc. participates in the Regional Multiple Listing Service of Minnesota, Inc Broker Reciprocity (sm) program, allowing us to display other broker's listings on our website. All properties are subject to prior sale, change or withdrawal.



Call Affinity Real Estate

218-237-3333

info@affinityrealestate.com



Affinity Real Estate - 600 Park Avenue South - Park Rapids MN 56470



website: www.AffinityRealEstate.com | email: info@affinityrealestate.com | office: 218-237-3333 | fax: 218-237-3377



\$259,900
 MLS 6775891 Residential
 2098 Isleview Road
 Grand Rapids MN 55744



website: www.AffinityRealEstate.com | email: info@affinityrealestate.com | office: 218-237-3333 | fax: 218-237-3377



\$259,900
MLS 6775891 Residential
2098 Isleview Road
Grand Rapids MN 55744



website: www.AffinityRealEstate.com | email: info@affinityrealestate.com | office: 218-237-3333 | fax: 218-237-3377

Affinity
REAL ESTATE INC

\$259,900
MLS 6775891 Residential
2098 Islevue Road
Grand Rapids MN 55744



website: www.AffinityRealEstate.com | email: info@affinityrealestate.com | office: 218-237-3333 | fax: 218-237-3377

Affinity
REAL ESTATE INC

\$259,900
MLS 6775891 Residential
2098 Islevue Road
Grand Rapids MN 55744



website: www.AffinityRealEstate.com | email: info@affinityrealestate.com | office: 218-237-3333 | fax: 218-237-3377

Affinity
REAL ESTATE INC

\$259,900
MLS 6775891 Residential
2098 Isleview Road
Grand Rapids MN 55744



website: www.AffinityRealEstate.com | email: info@affinityrealestate.com | office: 218-237-3333 | fax: 218-237-3377

Affinity
REAL ESTATE INC

\$259,900
MLS 6775891 Residential
2098 Islevue Road
Grand Rapids MN 55744



TOTAL: 1468 sq. ft.
 FLOOR 1: 336 sq. ft., FLOOR 2: 824 sq. ft., FLOOR 3: 308 sq. ft.
 EXCLUDED AREAS: BASEMENT: 389 sq. ft., UTILITY: 99 sq. ft., PORCH: 128 sq. ft.
 LOW CEILING: 35 sq. ft.
 WALLS: 159 sq. ft.

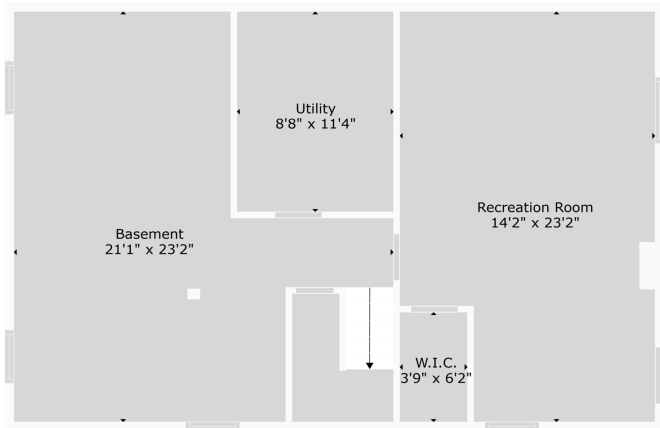


TOTAL: 1468 sq. ft.
 FLOOR 1: 336 sq. ft., FLOOR 2: 824 sq. ft., FLOOR 3: 308 sq. ft.
 EXCLUDED AREAS: BASEMENT: 389 sq. ft., UTILITY: 99 sq. ft., PORCH: 128 sq. ft.
 LOW CEILING: 35 sq. ft.
 WALLS: 159 sq. ft.

website: www.AffinityRealEstate.com | email: info@affinityrealestate.com | office: 218-237-3333 | fax: 218-237-3377

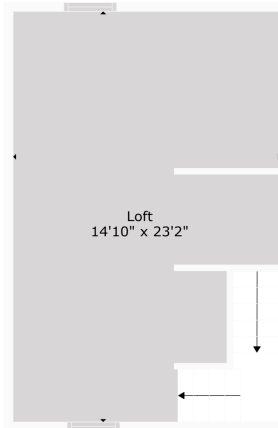
Affinity
 REAL ESTATE INC

\$259,900
 MLS 6775891 Residential
 2098 Islevue Road
 Grand Rapids MN 55744



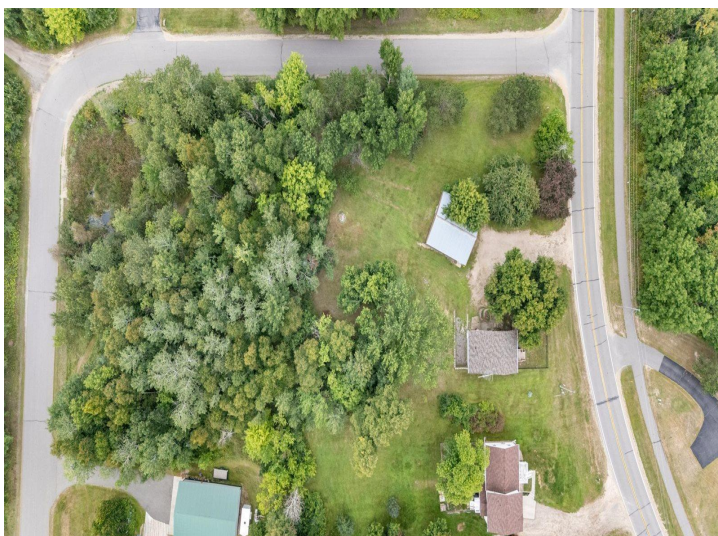
TOTAL: 1468 sq. ft.
FLOOR 1: 336 sq. ft., FLOOR 2: 824 sq. ft., FLOOR 3: 308 sq. ft.
EXCLUDED AREAS: BASEMENT: 309 sq. ft., UTILITY: 90 sq. ft., PORCH: 128 sq. ft.
LOW CEILING: 35 sq. ft.
WALLS: 159 sq. ft.

Floor Plan Created By Caltrans App. Measurements Deemed Highly Reliable But Not Guaranteed.



TOTAL: 1468 sq. ft.
FLOOR 1: 336 sq. ft., FLOOR 2: 824 sq. ft., FLOOR 3: 308 sq. ft.
EXCLUDED AREAS: BASEMENT: 309 sq. ft., UTILITY: 90 sq. ft., PORCH: 128 sq. ft.
LOW CEILING: 35 sq. ft.
WALLS: 159 sq. ft.

Floor Plan Created By Caltrans App. Measurements Deemed Highly Reliable But Not Guaranteed.



website: www.AffinityRealEstate.com | email: info@affinityrealestate.com | office: 218-237-3333 | fax: 218-237-3377

Affinity
REAL ESTATE INC

\$259,900
MLS 6775891 Residential
2098 Isleview Road
Grand Rapids MN 55744