

MLS 6775915 Lake Home

\$1,699,750

5,921 sq ft
3 bedrooms
5 baths

8821 Interlachen Road
Nisswa MN 56468

Waterfront: Margaret Lake (Lake
Shore City)

Status: Hold

Description:

Rare Privacy. Tucked off the historic country rd 77 in Lake Shore MN, Lake Margaret Manor is Custom built one level full brick home with 125' of West facing hard sand shoreline with 1.3 acres on the Gull Lake chain. Property features clear Douglass Fur floors sprawling throughout main floor, 3 full masonry marble fireplaces, attached studio apartment with full kitchen. Sub-Zero refrigeration throughout. The Library is the vocal point for the true craftsmanship that is noticed throughout home. The full finished basement is a clean slate for future bedrooms if desired! Cedar Sauna reaching temps of 200*.

Direct western exposure insures stunning Sunsets year round! Professionally landscaped grounds. 3 car finished and heated garage.

Home is energy efficient and cheap to heat and cool. Located in the heart of the lakes area near Bar-Harbor, Zorbaz and championship golf.

Additional Details:

| | |
|------------------------|-----------------|
| Year Built | 1986 |
| Lot Acres | 1.3 |
| Lot Dimensions | 125x382x127x385 |
| Garage Stalls | 3 |
| School District | 181 |
| Taxes | \$11,854 |
| Taxes with Assessments | \$11,920 |
| Tax Year | 2025 |

Additional Features:

Basement: Block, Finished, Full **Fuel:** Natural Gas **Garage:** 3 **Heat:** Boiler, Forced Air, Fireplace(s), Radiant Floor **Sewer:** Septic System Compliant - Yes, Tank with Drainage Field **Water:** Submersible - 4 Inch **Air Conditioning:** Central Air

Driving Directions:

from 77 and 371 in Nisswa take 77 west to 8821 on right



Listed By:
RE/MAX Results - Nisswa

Affinity Real Estate Inc. participates in the Regional Multiple Listing Service of Minnesota, Inc Broker Reciprocity (sm) program, allowing us to display other broker's listings on our website. All properties are subject to prior sale, change or withdrawal.



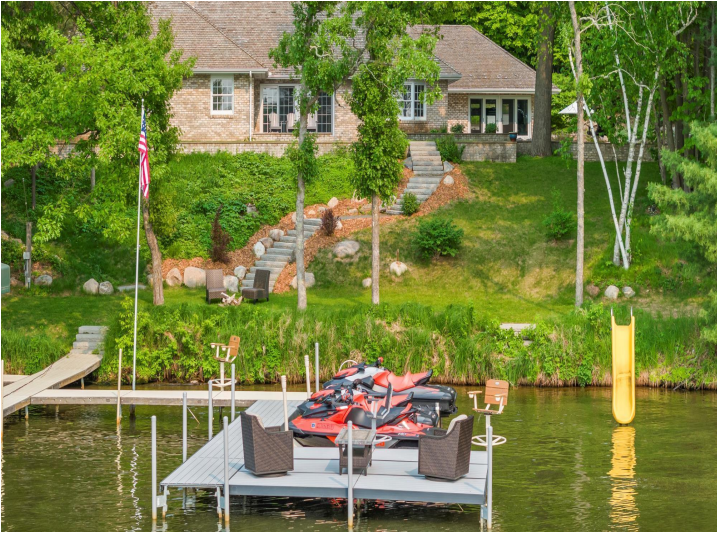
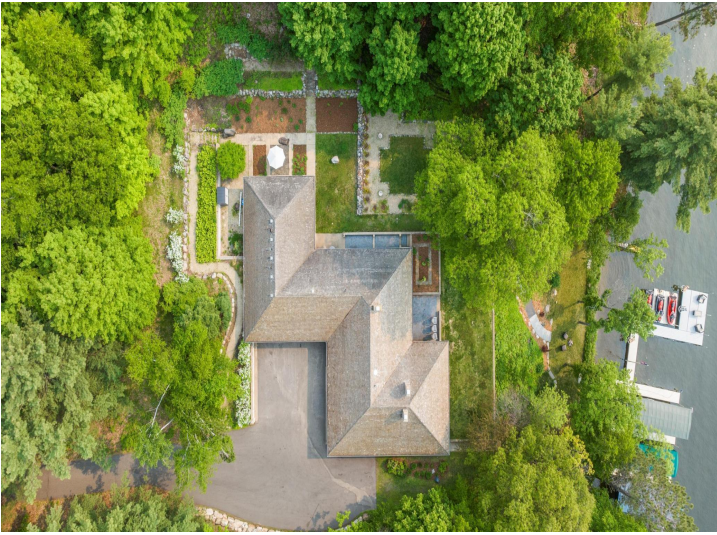
Call Affinity Real Estate

218-237-3333

info@affinityrealestate.com



Affinity Real Estate - 600 Park Avenue South - Park Rapids MN 56470



website: www.AffinityRealEstate.com | email: info@affinityrealestate.com | office: 218-237-3333 | fax:218-237-3377



\$1,699,750
MLS 6775915 Lake Home
8821 Interlachen Road
Nisswa MN 56468



website: www.AffinityRealEstate.com | email: info@affinityrealestate.com | office: 218-237-3333 | fax: 218-237-3377

Affinity
REAL ESTATE INC

\$1,699,750
MLS 6775915 Lake Home
8821 Interlachen Road
Nisswa MN 56468



website: www.AffinityRealEstate.com | email: info@affinityrealestate.com | office: 218-237-3333 | fax: 218-237-3377

Affinity
REAL ESTATE INC

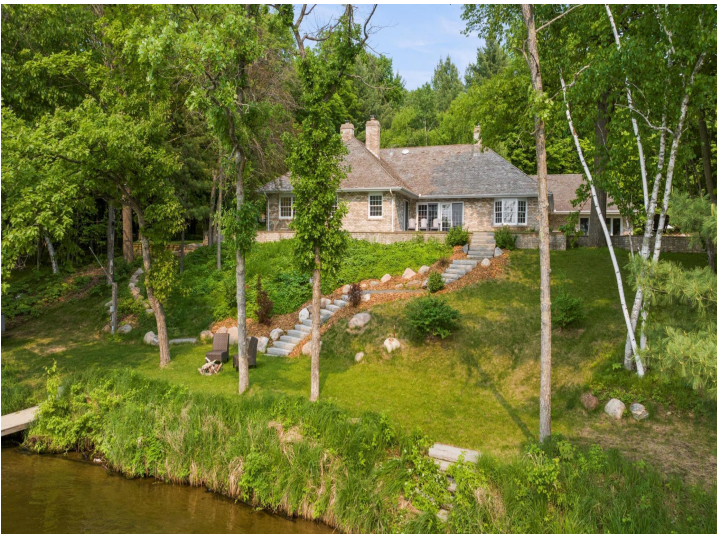
\$1,699,750
MLS 6775915 Lake Home
8821 Interlachen Road
Nisswa MN 56468



website: www.AffinityRealEstate.com | email: info@affinityrealestate.com | office: 218-237-3333 | fax:218-237-3377

Affinity
REAL ESTATE INC

\$1,699,750
MLS 6775915 Lake Home
8821 Interlachen Road
Nisswa MN 56468



website: www.AffinityRealEstate.com | email: info@affinityrealestate.com | office: 218-237-3333 | fax:218-237-3377

Affinity
REAL ESTATE INC

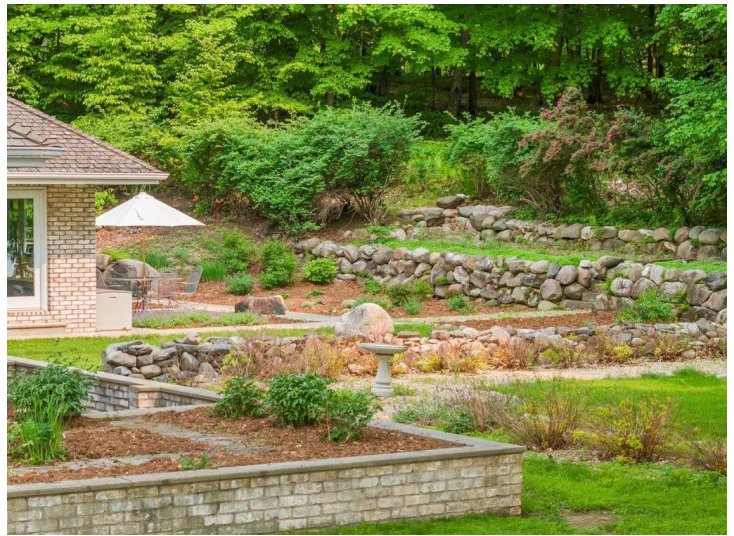
\$1,699,750
MLS 6775915 Lake Home
8821 Interlachen Road
Nisswa MN 56468



website: www.AffinityRealEstate.com | email: info@affinityrealestate.com | office: 218-237-3333 | fax:218-237-3377



\$1,699,750
MLS 6775915 Lake Home
8821 Interlachen Road
Nisswa MN 56468



website: www.AffinityRealEstate.com | email: info@affinityrealestate.com | office: 218-237-3333 | fax:218-237-3377



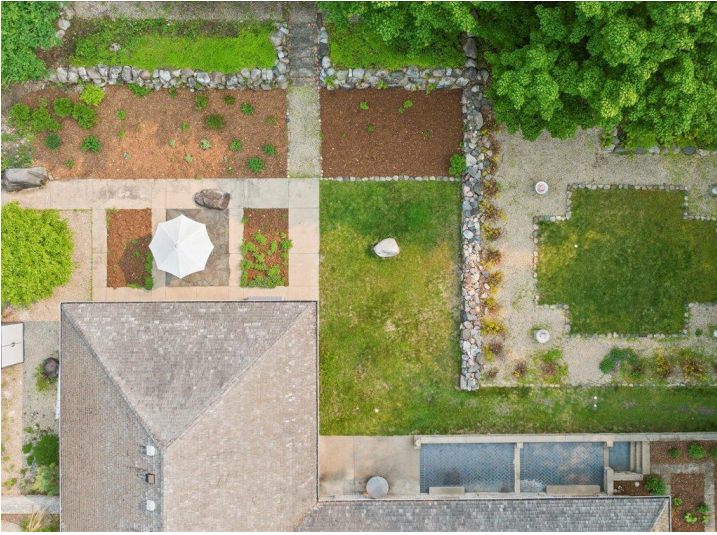
\$1,699,750
MLS 6775915 Lake Home
8821 Interlachen Road
Nisswa MN 56468



website: www.AffinityRealEstate.com | email: info@affinityrealestate.com | office: 218-237-3333 | fax:218-237-3377



\$1,699,750
MLS 6775915 Lake Home
8821 Interlachen Road
Nisswa MN 56468



website: www.AffinityRealEstate.com | email: info@affinityrealestate.com | office: 218-237-3333 | fax:218-237-3377



\$1,699,750
MLS 6775915 Lake Home
8821 Interlachen Road
Nisswa MN 56468



website: www.AffinityRealEstate.com | email: info@affinityrealestate.com | office: 218-237-3333 | fax:218-237-3377



\$1,699,750
MLS 6775915 Lake Home
8821 Interlachen Road
Nisswa MN 56468