



MLS 6776187 Lake Home

\$1,895,000

2,970 sq ft
5 bedrooms
3 baths

10960 Pine Beach Peninsula Road
East Gull Lake MN 56401

Waterfront: Gull

Status: Hold

Description:

Introducing a rare offering on the highly sought-after Pine Beach Peninsula in East Gull Lake—this impeccably maintained Gull Lake residence presents timeless elegance, modern luxury, and breathtaking panoramic views. Set on a premier stretch of shoreline, the home showcases like-new condition throughout, reflecting meticulous care and pride of ownership. Featuring 5 spacious bedrooms and 3 well-appointed baths, this thoughtfully designed retreat blends refined comfort with effortless lake living. Expansive windows frame stunning vistas from nearly every room, while natural light fills the open-concept living spaces. The main level offers an inviting great room anchored by a stone fireplace, a chef's kitchen with premium finishes, and seamless access to lakeside patios and outdoor entertaining areas. A custom hill climber and thoughtfully designed stairs provide easy access to the waterfront, where you'll find elevated views from a beautifully positioned firepit—perfect for gatherings and entertaining. From its manicured grounds to its pristine interiors, this property represents one of Gull Lake's most coveted opportunities—whether for year-round living or a refined seasonal escape. Neighborhood association includes private access to tennis/pickle ball courts and a common park area. Experience the tranquility, luxury, and prestige of Pine Beach Peninsula from this exceptional waterfront sanctuary.

Additional Details:

Year Built	2003
Lot Acres	0.7
Lot Dimensions	100x371x102x319
Garage Stalls	2
School District	116
Taxes	\$6,703
Taxes with Assessments	\$7,152
Tax Year	2025

Additional Features:

Basement: None **Fuel:** Natural Gas **Garage:** 2 **Heat:** Ductless Mini-Split, Forced Air **Sewer:** City Sewer/Connected **Water:** Submersible - 4 Inch, Drilled **Air Conditioning:** Central Air, Ductless Mini-Split

Driving Directions:



(Go Rte #77) TO MADDEN'S, RIGHT THROUGH THE GATES ON PINE BEACH PENINSULA TO 10960.
Northland Sotheby's International Realty

Affinity Real Estate Inc. participates in the Regional Multiple Listing Service of Minnesota, Inc Broker Reciprocity (sm) program, allowing us to display other broker's listings on our website. All properties are subject to prior sale, change or withdrawal.



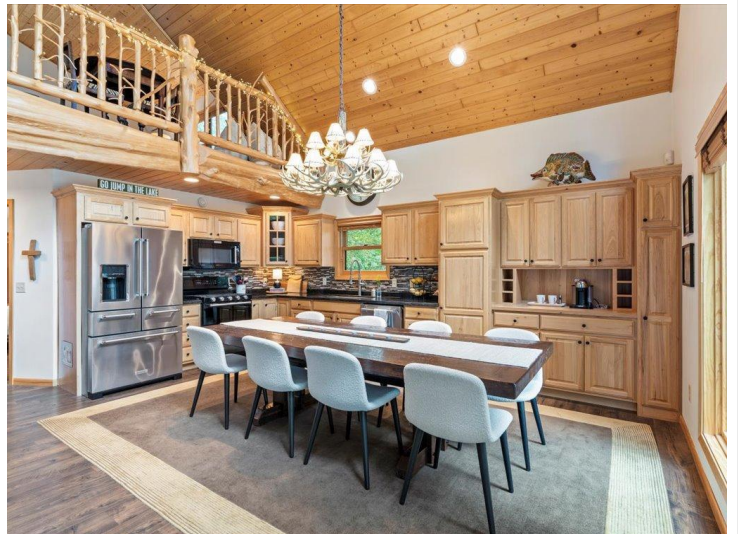
Call Affinity Real Estate

218-237-3333

info@affinityrealestate.com



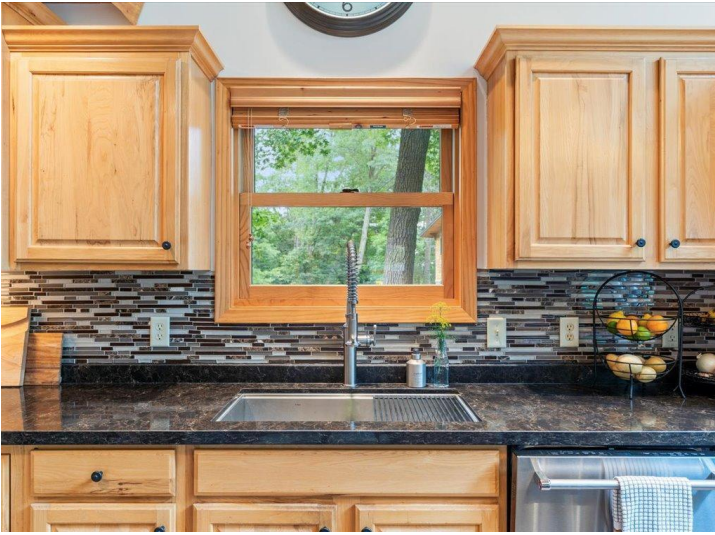
Affinity Real Estate - 600 Park Avenue South - Park Rapids MN 56470



website: www.AffinityRealEstate.com | email: info@affinityrealestate.com | office: 218-237-3333 | fax: 218-237-3377



\$1,895,000
 MLS 6776187 Lake Home
 10960 Pine Beach Peninsula
 Road
 East Gull Lake MN 56401



website: www.AffinityRealEstate.com | email: info@affinityrealestate.com | office: 218-237-3333 | fax: 218-237-3377

Affinity
REAL ESTATE INC

\$1,895,000

MLS 6776187 Lake Home
10960 Pine Beach Peninsula
Road
East Gull Lake MN 56401

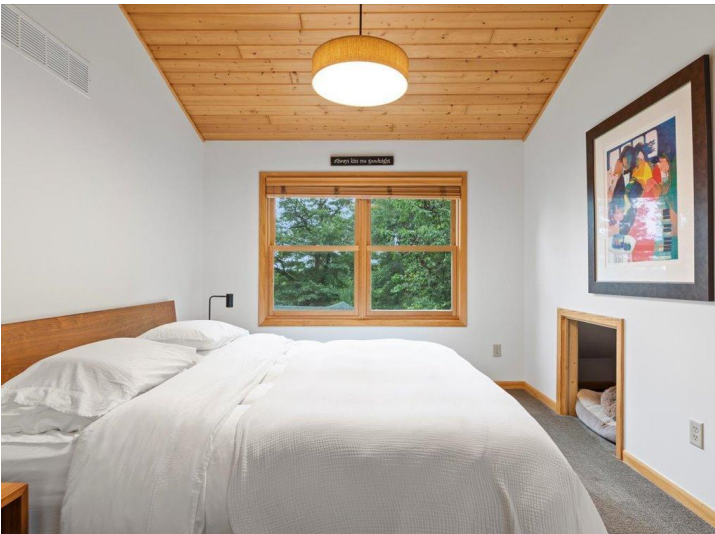


website: www.AffinityRealEstate.com | email: info@affinityrealestate.com | office: 218-237-3333 | fax: 218-237-3377

Affinity
REAL ESTATE INC

\$1,895,000

MLS 6776187 Lake Home
10960 Pine Beach Peninsula
Road
East Gull Lake MN 56401



website: www.AffinityRealEstate.com | email: info@affinityrealestate.com | office: 218-237-3333 | fax: 218-237-3377

Affinity
REAL ESTATE INC

\$1,895,000
MLS 6776187 Lake Home
10960 Pine Beach Peninsula
Road
East Gull Lake MN 56401



website: www.AffinityRealEstate.com | email: info@affinityrealestate.com | office: 218-237-3333 | fax: 218-237-3377

Affinity
REAL ESTATE INC

\$1,895,000
MLS 6776187 Lake Home
10960 Pine Beach Peninsula
Road
East Gull Lake MN 56401



website: www.AffinityRealEstate.com | email: info@affinityrealestate.com | office: 218-237-3333 | fax: 218-237-3377



\$1,895,000
MLS 6776187 Lake Home
10960 Pine Beach Peninsula
Road
East Gull Lake MN 56401



website: www.AffinityRealEstate.com | email: info@affinityrealestate.com | office: 218-237-3333 | fax: 218-237-3377



\$1,895,000
 MLS 6776187 Lake Home
 10960 Pine Beach Peninsula
 Road
 East Gull Lake MN 56401



website: www.AffinityRealEstate.com | email: info@affinityrealestate.com | office: 218-237-3333 | fax: 218-237-3377

Affinity
REAL ESTATE INC

\$1,895,000

MLS 6776187 Lake Home
10960 Pine Beach Peninsula
Road
East Gull Lake MN 56401



website: www.AffinityRealEstate.com | email: info@affinityrealestate.com | office: 218-237-3333 | fax: 218-237-3377



\$1,895,000
 MLS 6776187 Lake Home
 10960 Pine Beach Peninsula
 Road
 East Gull Lake MN 56401



website: www.AffinityRealEstate.com | email: info@affinityrealestate.com | office: 218-237-3333 | fax: 218-237-3377



\$1,895,000

MLS 6776187 Lake Home
10960 Pine Beach Peninsula
Road
East Gull Lake MN 56401



website: www.AffinityRealEstate.com | email: info@affinityrealestate.com | office: 218-237-3333 | fax: 218-237-3377

Affinity
REAL ESTATE INC

\$1,895,000

MLS 6776187 Lake Home
10960 Pine Beach Peninsula
Road
East Gull Lake MN 56401



website: www.AffinityRealEstate.com | email: info@affinityrealestate.com | office: 218-237-3333 | fax: 218-237-3377



\$1,895,000
MLS 6776187 Lake Home
10960 Pine Beach Peninsula
Road
East Gull Lake MN 56401