

MLS 6776695 Land

\$62,900

6.96 Acres
Other

TBD 112 th
Pillager MN 56473

Status: Pending

Description:

An opportunity to own 6.96 acres of beautiful countryside just minutes from Pillager! This gently rolling parcel offers a great mix of open meadow and a small wooded area, perfect for building your dream home, starting a hobby farm, or creating a private retreat.

Additional Details:

Lot Acres	6.96
Lot Dimensions	300x826x600x185x300x640 approx
School District	116
Taxes	\$342
Taxes with Assessments	(unreported)
Tax Year	2025

Additional Features:

Driving Directions:

North on County Road 1 out of Pillager to West on County Road 34 approx 1.5 miles to property on North side of road.



Listed By:
Coldwell Banker Crown Realtors

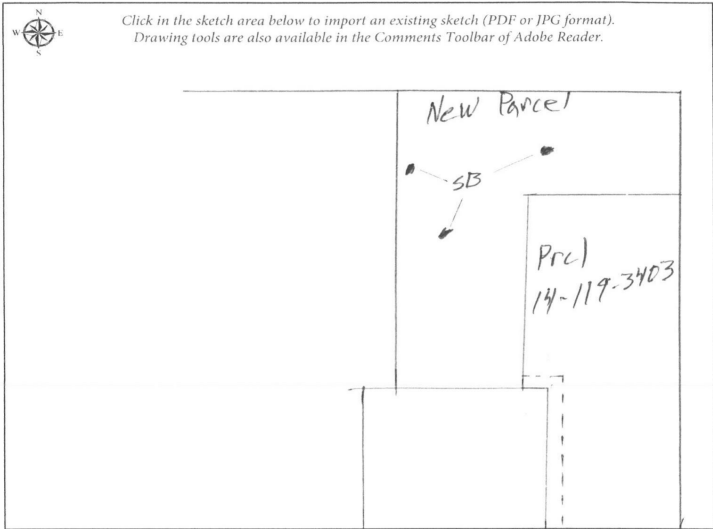
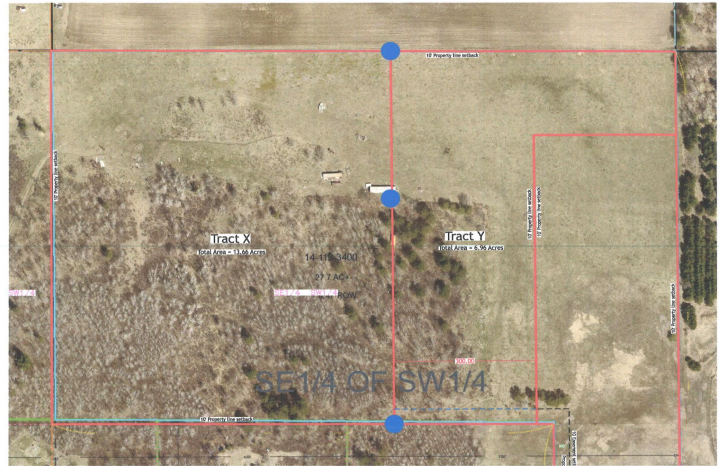
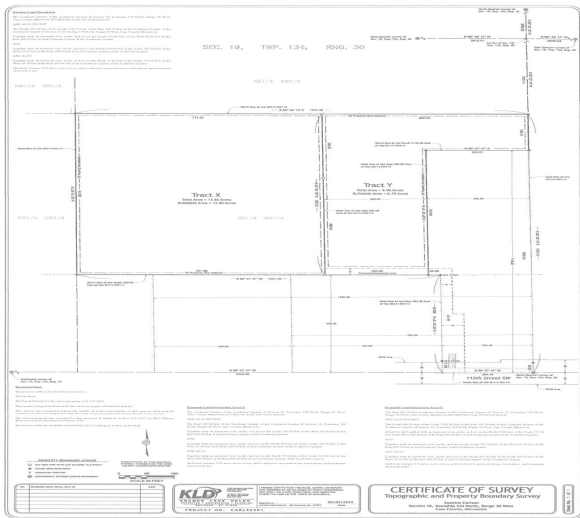
Affinity Real Estate Inc. participates in the Regional Multiple Listing Service of Minnesota, Inc Broker Reciprocity (sm) program, allowing us to display other broker's listings on our website. All properties are subject to prior sale, change or withdrawal.



Call Affinity Real Estate
218-237-3333
info@affinityrealestate.com



Affinity Real Estate - 600 Park Avenue South - Park Rapids MN 56470



website: www.AffinityRealEstate.com | email: info@affinityrealestate.com | office: 218-237-3333 | fax: 218-237-3377



\$62,900
 MLS 6776695 Land
 TBD 112 th
 Pillager MN 56473



website: www.AffinityRealEstate.com | email: info@affinityrealestate.com | office: 218-237-3333 | fax: 218-237-3377



\$62,900
MLS 6776695 Land
TBD 112 th
Pillager MN 56473



website: www.AffinityRealEstate.com | email: info@affinityrealestate.com | office: 218-237-3333 | fax: 218-237-3377



\$62,900
MLS 6776695 Land
TBD 112 th
Pillager MN 56473