



MLS 6776722 Lake Home

\$774,900

4,006 sq ft
5 bedrooms
6 baths

16316 Birchwood Lane
Brainerd MN 56401

Waterfront: Gilbert

Status: Hold

Description:

Discover the tranquil setting on the shores of Gilbert Lake's back bay with this tastefully built 4000sq ft home. This 5+bedroom 6 bath multi-level offers privacy, wildlife, and an abundance of recreational opportunity. Set on the quiet inlet perfect for kayaking, fishing, and serenity with direct access to the main lake this property is a haven for outdoor enthusiasts that also want the convenience of Brainerd's amenities, but the serenity nature and lake living bring. The addition offers an expansive primary suite, tons of light throughout, kitchen with granite and combination dining room, new carpet and hardwood floors, lakeside living room with gas fireplace, option to also use the wood burning stove in the family room, oversized mud room with slate tile and built in storage off the attached garage, dog kennel, lakeside deck perfect for quiet evenings watching the sunsets. The property boasts 3 gathering areas, two primary en-suites, a spacious and updated kitchen, sauna, tons of storage, quality materials and build and such a peaceful atmosphere you will never want to leave!

Additional Details:

Year Built	1977
Lot Acres	0.69
Lot Dimensions	100x350
Garage Stalls	2
School District	181
Taxes	\$4,182
Taxes with Assessments	\$4,182
Tax Year	2024

Additional Features:

Basement: Block, Daylight/Lookout Windows, Drainage System, Egress Window(s), Finished, Full, Storage Space, Sump Pump **Fuel:** Electric, Natural Gas **Garage:** 2 **Heat:** Dual, Forced Air, Fireplace(s), Radiant Floor, Wood Stove **Sewer:** Private Sewer, Tank with Drainage Field **Water:** Drilled, Private, Well **Air Conditioning:** Central Air

Driving Directions:

Riverside drive to a left on McKay to a left on Birchwood Lane to signs on the right



Listed By:
Northland Sotheby's International Realty

Affinity Real Estate Inc. participates in the Regional Multiple Listing Service of Minnesota, Inc Broker Reciprocity (sm) program, allowing us to display other broker's listings on our website. All properties are subject to prior sale, change or withdrawal.



Call Affinity Real Estate

218-237-3333

info@affinityrealestate.com



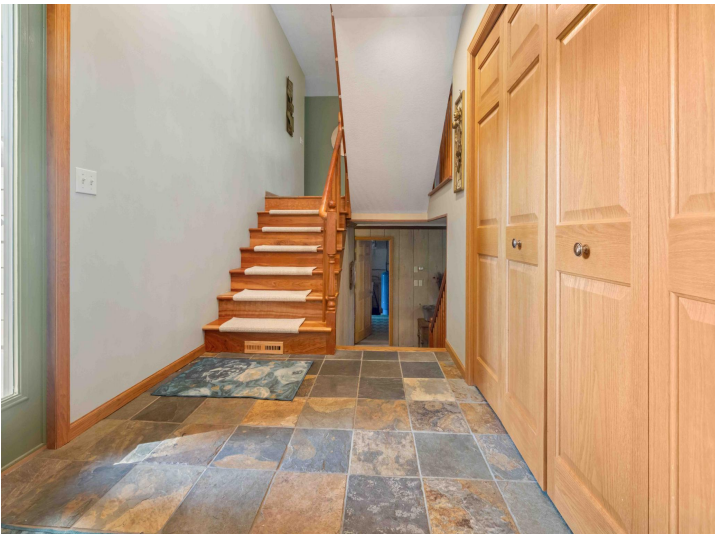
Affinity Real Estate - 600 Park Avenue South - Park Rapids MN 56470



website: www.AffinityRealEstate.com | email: info@affinityrealestate.com | office: 218-237-3333 | fax: 218-237-3377

Affinity
REAL ESTATE INC

\$774,900
MLS 6776722 Lake Home
16316 Birchwood Lane
Brainerd MN 56401



website: www.AffinityRealEstate.com | email: info@affinityrealestate.com | office: 218-237-3333 | fax: 218-237-3377

Affinity
REAL ESTATE INC

\$774,900
MLS 6776722 Lake Home
16316 Birchwood Lane
Brainerd MN 56401



website: www.AffinityRealEstate.com | email: info@affinityrealestate.com | office: 218-237-3333 | fax: 218-237-3377

Affinity
REAL ESTATE INC

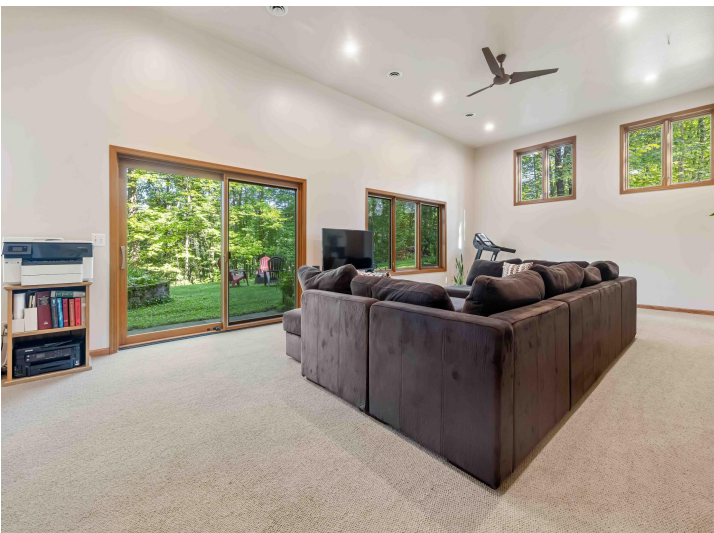
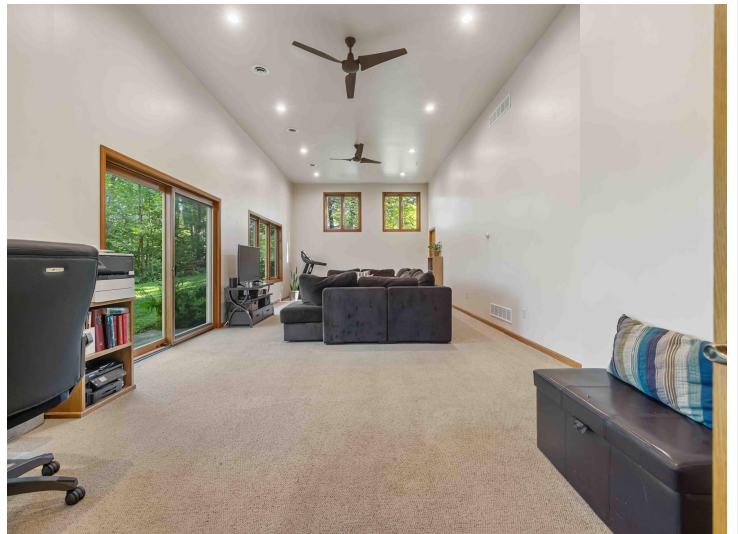
\$774,900
MLS 6776722 Lake Home
16316 Birchwood Lane
Brainerd MN 56401



website: www.AffinityRealEstate.com | email: info@affinityrealestate.com | office: 218-237-3333 | fax: 218-237-3377

Affinity
REAL ESTATE INC

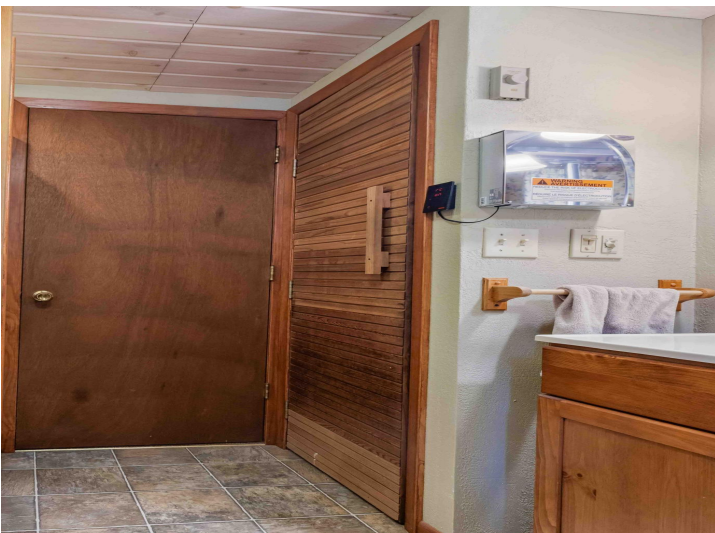
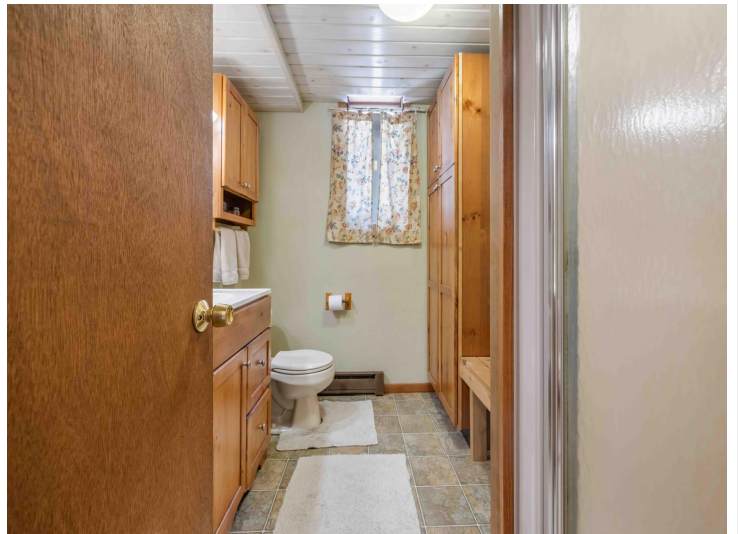
\$774,900
MLS 6776722 Lake Home
16316 Birchwood Lane
Brainerd MN 56401



website: www.AffinityRealEstate.com | email: info@affinityrealestate.com | office: 218-237-3333 | fax: 218-237-3377



\$774,900
 MLS 6776722 Lake Home
 16316 Birchwood Lane
 Brainerd MN 56401



website: www.AffinityRealEstate.com | email: info@affinityrealestate.com | office: 218-237-3333 | fax: 218-237-3377

Affinity
REAL ESTATE INC

\$774,900
MLS 6776722 Lake Home
16316 Birchwood Lane
Brainerd MN 56401



website: www.AffinityRealEstate.com | email: info@affinityrealestate.com | office: 218-237-3333 | fax: 218-237-3377



\$774,900
MLS 6776722 Lake Home
16316 Birchwood Lane
Brainerd MN 56401



website: www.AffinityRealEstate.com | email: info@affinityrealestate.com | office: 218-237-3333 | fax: 218-237-3377



\$774,900
MLS 6776722 Lake Home
16316 Birchwood Lane
Brainerd MN 56401

website: www.AffinityRealEstate.com | email: info@affinityrealestate.com | office: 218-237-3333 | fax:218-237-3377



\$774,900

MLS 6776722 Lake Home
16316 Birchwood Lane
Brainerd MN 56401

website: www.AffinityRealEstate.com | email: info@affinityrealestate.com | office: 218-237-3333 | fax:218-237-3377



\$774,900

MLS 6776722 Lake Home
16316 Birchwood Lane
Brainerd MN 56401