



MLS 6776923 Lake Land

\$89,000

Description:

Discover the possibilities with this 10.7-acre parcel near Backus, offering a blend of open and wooded acreage with natural frontage along the Pine River. The river and surrounding wetlands create a peaceful backdrop and attract abundant wildlife, making it a great setting for outdoor recreation and nature watching. Several excellent building sites provide space and privacy, while the mix of woods and open areas is ideal for hunting, hobby use, or simply enjoying the outdoors. Convenient year-round access puts you just minutes from Backus and the surrounding lakes, offering a perfect opportunity for a cabin, year-round home, or private retreat in the heart of lake country.

Additional Details:

Lot Acres	10.7
Lot Dimensions	714x633x712x566
School District	2174
Taxes	\$24
Taxes with Assessments	\$24
Tax Year	2025

Additional Features:

Driving Directions:

1.3 miles south of downtown Backus on Hwy 87, just before 90 degree curve to West on left side. Will follow easement back to river lot-call for directions



Listed By:
Gallery of Homes

Affinity Real Estate Inc. participates in the Regional Multiple Listing Service of Minnesota, Inc Broker Reciprocity (sm) program, allowing us to display other broker's listings on our website. All properties are subject to prior sale, change or withdrawal.



Call Affinity Real Estate

218-237-3333

info@affinityrealestate.com

MLS



Affinity Real Estate - 600 Park Avenue South - Park Rapids MN 56470

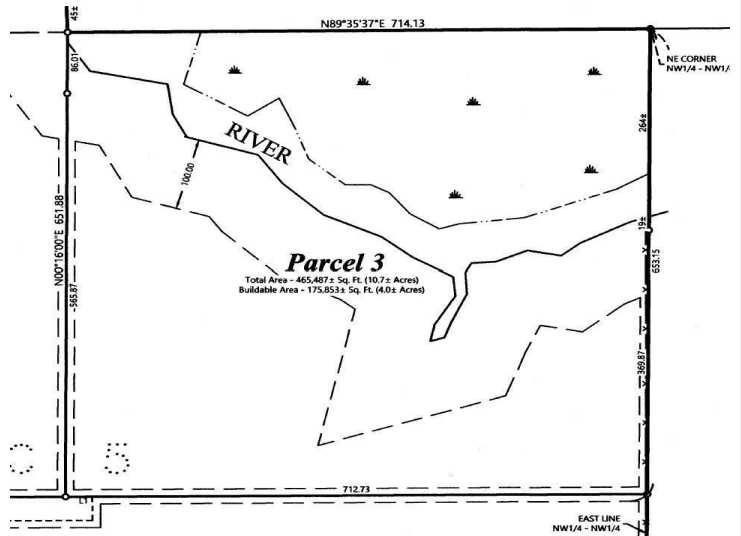
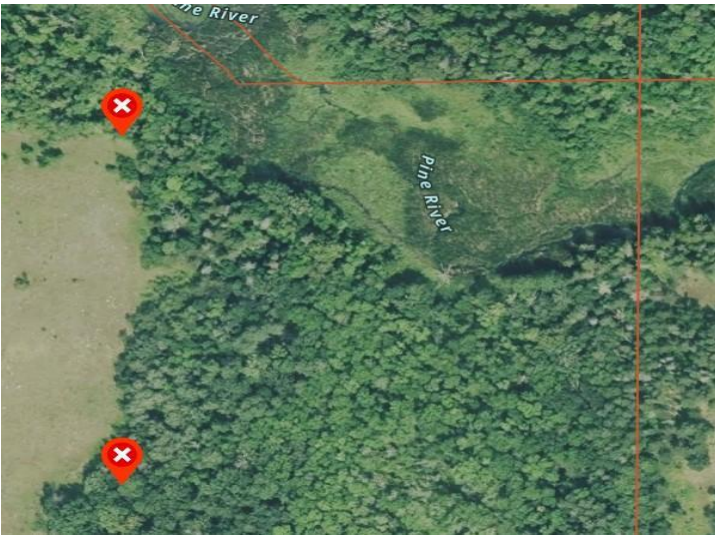


website: www.AffinityRealEstate.com | email: info@affinityrealestate.com | office: 218-237-3333 | fax: 218-237-3377



\$89,000

MLS 6776923 Lake Land
parcel 3 Hwy 87
Backus MN 56435



website: www.AffinityRealEstate.com | email: info@affinityrealestate.com | office: 218-237-3333 | fax: 218-237-3377



\$89,000

MLS 6776923 Lake Land
parcel 3 Hwy 87
Backus MN 56435