

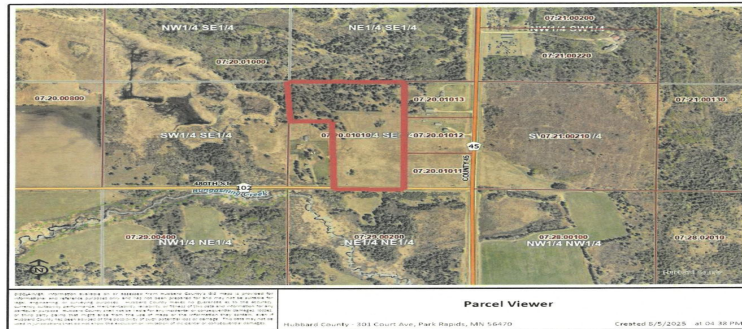


MLS 6776932 Residential

**\$357,000**

1,648 sq ft  
3 bedrooms  
1 baths

28682 480th Street  
Laporte MN 56461



[https://gis.co.hubbard.mn.us/arcgis/rest/directories/arcgisjobs/link\\_print\\_gpserver/f5ff7ef9bc49417aac477681d1f5c98/scratch/74001e8c-7244-11f0-a911-00155d7b342a.jpg](https://gis.co.hubbard.mn.us/arcgis/rest/directories/arcgisjobs/link_print_gpserver/f5ff7ef9bc49417aac477681d1f5c98/scratch/74001e8c-7244-11f0-a911-00155d7b342a.jpg) 1/1

Status: Pending

**Description:**

3 bed 1 bath slab on grade home on 25ac

**Additional Details:**

Year Built	2006
Lot Acres	25
Lot Dimensions	900x1320
Garage Stalls	2
School District	31
Taxes	\$2,252
Taxes with Assessments	\$2,252
Tax Year	2024

**Additional Features:**

**Basement:** None **Fuel:** Electric, Propane, Wood **Garage:** 2 **Heat:** Forced Air, Fireplace(s), Outdoor Boiler **Sewer:** Private Sewer **Water:** Private  
**Air Conditioning:** None

**Driving Directions:**

Hwy 2 to county 45 turn right 480th turn right



Listed By:  
Grimes Realty

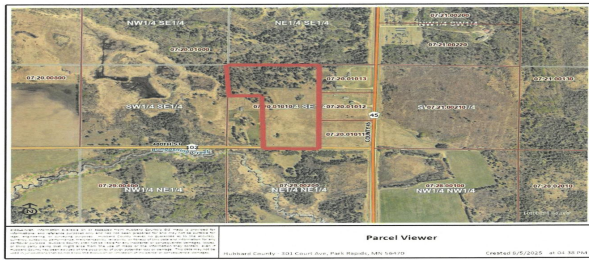
Affinity Real Estate Inc. participates in the Regional Multiple Listing Service of Minnesota, Inc Broker Reciprocity (sm) program, allowing us to display other broker's listings on our website. All properties are subject to prior sale, change or withdrawal.



Call Affinity Real Estate

**218-237-3333****info@affinityrealestate.com**

Affinity Real Estate - 600 Park Avenue South - Park Rapids MN 56470



[https://gis.co.hubbard.mn.us/arcgis/rest/directories/arcgisjobs/link\\_print\\_gisserver/58f7ef8bc48417aac477681d185c6b/scratch/74001aRc-7244-110-a911-00165d7b342a.jpg](https://gis.co.hubbard.mn.us/arcgis/rest/directories/arcgisjobs/link_print_gisserver/58f7ef8bc48417aac477681d185c6b/scratch/74001aRc-7244-110-a911-00165d7b342a.jpg) 1/1

website: [www.AffinityRealEstate.com](http://www.AffinityRealEstate.com) | email: [info@affinityrealestate.com](mailto:info@affinityrealestate.com) | office: 218-237-3333 | fax: 218-237-3377



**\$357,000**  
MLS 6776932 Residential  
28682 480th Street  
Laporte MN 56461