



MLS 6777076 Commercial

\$29,900

6203 #11 Northwood Drive
Pequot Lakes MN 56472

Status: Pending

Description:

Rare opportunity on small 11-unit storage park. Easy access off CR 16. End unit #11, is 10.5x35. all steel construction, concrete floors, metal service door and 10'high, 8'wide overhead door. Lighting and electrical outlets. Garage door opener could be added. This is a stock certificate sale/transfer. perfect for side-by-sides, boat, camper or RV. \$750 HOA dues annually, paid in January. HOA includes real estate taxes, electric, insurance and snow plowing.

Additional Details:

Year Built	2002
Lot Acres	1.07
Lot Dimensions	150x310x150x310
Garage Stalls	2
School District	186
Taxes	(unreported)
Taxes with Assessments	(unreported)
Tax Year	2025

Additional Features:

Fuel: Electric **Heat:** None

Driving Directions:

From Crosslake, take CR 16 towards Jenkins, take a left on Northwood Drive, storage facility is on the right at 6203 Northwood Dr, Unit #11 is the far end unit.



Listed By:
Edina Realty, Inc.

Affinity Real Estate Inc. participates in the Regional Multiple Listing Service of Minnesota, Inc Broker Reciprocity (sm) program, allowing us to display other broker's listings on our website. All properties are subject to prior sale, change or withdrawal.



Call Affinity Real Estate

218-237-3333

info@affinityrealestate.com



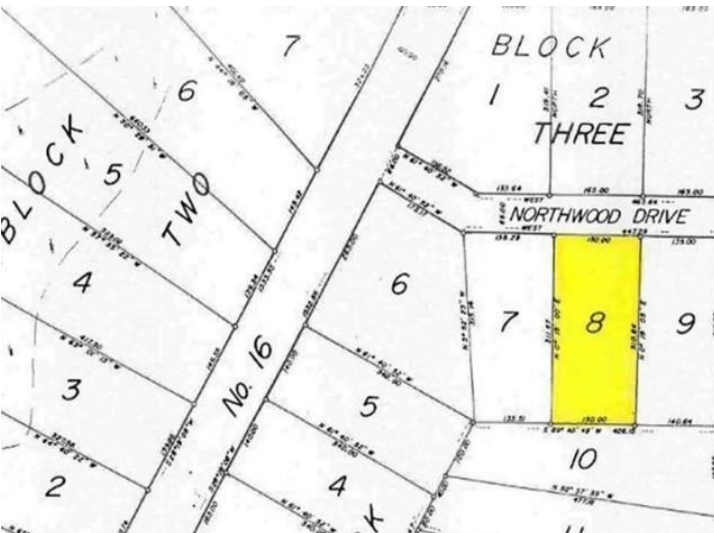
Affinity Real Estate - 600 Park Avenue South - Park Rapids MN 56470



website: www.AffinityRealEstate.com | email: info@affinityrealestate.com | office: 218-237-3333 | fax: 218-237-3377



\$29,900
 MLS 6777076 Commercial
 6203 #11 Northwood Drive
 Pequot Lakes MN 56472



website: www.AffinityRealEstate.com | email: info@affinityrealestate.com | office: 218-237-3333 | fax: 218-237-3377



\$29,900
 MLS 6777076 Commercial
 6203 #11 Northwood Drive
 Pequot Lakes MN 56472