



MLS 6777313 Residential

\$279,900

1,395 sq ft
3 bedrooms
2 baths

2215 Deep Rock Loop
Bemidji MN 56601

Status: Active

Description:

Beautifully Updated 3-Bedroom End Unit in Deep Rock Townhomes

Welcome to easy living in this spacious 3-bedroom, 2-bathroom end unit located in the desirable Deep Rock Townhomes community. Thoughtfully updated throughout, this home features brand-new flooring, stylish fixtures, and a modern, comfortable layout.

Step outside to your own private patio, complete with a new electric awning—perfect for relaxing or entertaining while overlooking the peaceful courtyard. With no more snow removal or lawn maintenance to worry about, you'll have more time to enjoy the lifestyle you deserve.

Whether you're looking to downsize, upgrade, or simplify, this move-in-ready home offers the perfect blend of comfort, convenience, and charm. Live your best life at Deep Rock!

Additional Details:

Year Built	2014
Lot Acres	0.16
Lot Dimensions	41x54
Garage Stalls	2
School District	31
Taxes	\$3,112
Taxes with Assessments	\$3,298
Tax Year	2025

Additional Features:

Basement: None **Fuel:** Natural Gas **Garage:** 2 **Heat:** Forced Air **Sewer:** City Sewer/Connected **Water:** City Water/Connected **Air Conditioning:** Central Air

Driving Directions:

West on Division St. left on Jefferson Ave, right on Deep Rock Loop. When you reach the end of Deep Rock Loop, turn right and #2215 will be on the left.



Listed By:
218 Real Estate

Affinity Real Estate Inc. participates in the Regional Multiple Listing Service of Minnesota, Inc Broker Reciprocity (sm) program, allowing us to display other broker's listings on our website. All properties are subject to prior sale, change or withdrawal.



Call Affinity Real Estate

218-237-3333

info@affinityrealestate.com



Affinity Real Estate - 600 Park Avenue South - Park Rapids MN 56470



website: www.AffinityRealEstate.com | email: info@affinityrealestate.com | office: 218-237-3333 | fax: 218-237-3377

Affinity
REAL ESTATE INC

\$279,900
MLS 6777313 Residential
2215 Deep Rock Loop
Bemidji MN 56601



website: www.AffinityRealEstate.com | email: info@affinityrealestate.com | office: 218-237-3333 | fax: 218-237-3377



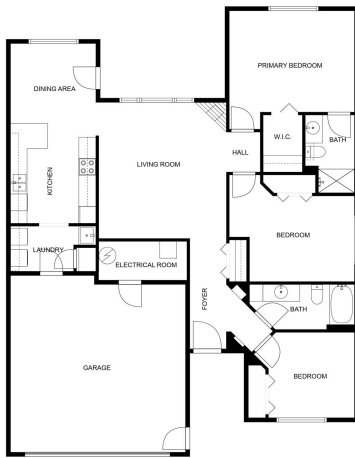
\$279,900
MLS 6777313 Residential
2215 Deep Rock Loop
Bemidji MN 56601



website: www.AffinityRealEstate.com | email: info@affinityrealestate.com | office: 218-237-3333 | fax: 218-237-3377

Affinity
REAL ESTATE INC

\$279,900
MLS 6777313 Residential
2215 Deep Rock Loop
Bemidji MN 56601



FLOOR PLAN CREATED BY CUBICASA APP. MEASUREMENTS DEEMED HIGHLY RELIABLE BUT NOT GUARANTEED.



website: www.AffinityRealEstate.com | email: info@affinityrealestate.com | office: 218-237-3333 | fax: 218-237-3377

Affinity
REAL ESTATE INC

\$279,900
MLS 6777313 Residential
2215 Deep Rock Loop
Bemidji MN 56601



website: www.AffinityRealEstate.com | email: info@affinityrealestate.com | office: 218-237-3333 | fax:218-237-3377



\$279,900

MLS 6777313 Residential
2215 Deep Rock Loop
Bemidji MN 56601