



MLS 6777392 Residential

\$135,000

0 sq ft
3 bedrooms
1 baths

44969 County 97
Solway MN 56678

Status: Active

Description:

9-acre property in Solway, just 20 miles from Bemidji and abuts public land! Built in 2010, this 3-bedroom, 1-bath home features an open floor plan and sits tucked back off the road for excellent privacy. The home is being sold as-is and will need finishing—kitchen installation, flooring, and other updates—allowing the new owner to complete it to their own style and taste. Acreage includes a beautiful mix of trees, high ground, and lowland, offering space to enjoy nature and make it your own.

Additional Details:

Year Built	2010
Lot Acres	9
Lot Dimensions	467x1321x197x865x270x466
School District	31
Taxes	\$1,285
Taxes with Assessments	\$1,506
Tax Year	2025

Additional Features:

Fuel: Propane **Heat:** Forced Air

Driving Directions:

From Solway head south on Centerline Rd N toward 1st St for 12 miles. Continue straight onto County 97 for 1.5 miles. Turn Left to stay on County 97 for 1.7 miles and turn right to property



Listed By:
Realty ONE Group Choice

Affinity Real Estate Inc. participates in the Regional Multiple Listing Service of Minnesota, Inc Broker Reciprocity (sm) program, allowing us to display other broker's listings on our website. All properties are subject to prior sale, change or withdrawal.



Call Affinity Real Estate

218-237-3333

info@affinityrealestate.com



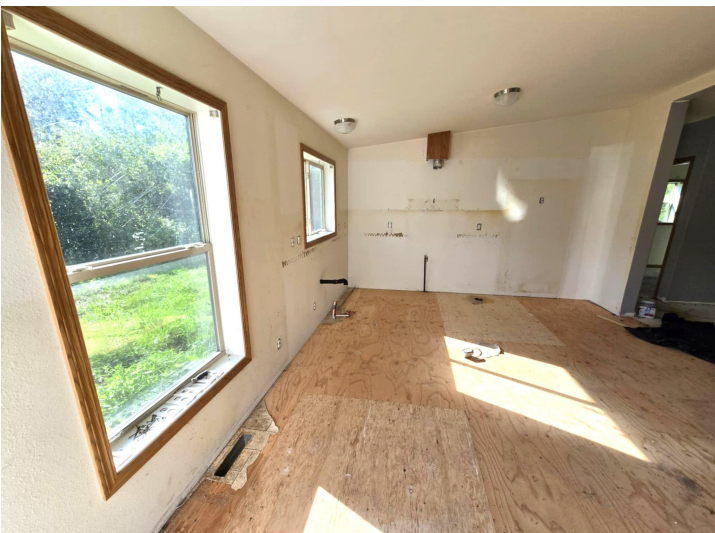
Affinity Real Estate - 600 Park Avenue South - Park Rapids MN 56470



website: www.AffinityRealEstate.com | email: info@affinityrealestate.com | office: 218-237-3333 | fax: 218-237-3377

Affinity
REAL ESTATE INC

\$135,000
MLS 6777392 Residential
44969 County 97
Solway MN 56678



website: www.AffinityRealEstate.com | email: info@affinityrealestate.com | office: 218-237-3333 | fax: 218-237-3377

Affinity
REAL ESTATE INC

\$135,000
MLS 6777392 Residential
44969 County 97
Solway MN 56678