



MLS 6777431 Residential

\$582,625

1,722 sq ft
3 bedrooms
2 baths

15828 Old Stonebridge Trail
Brainerd MN 56401

Status: Active

Description:

Under construction! Perfectly situated in an amazing location just minutes from town. Nestled on a spacious half-acre lot, this quiet, peaceful neighborhood features a community walking path around a charming small lake and is surrounded by other quality homes, creating a truly welcoming environment. Inside, you'll find a thoughtfully designed 3 bedroom layout with vaulted ceilings and an inviting electric fireplace. The primary bath features a tiled walk-in shower, dual vanities with quartz countertops, and elegant finishes throughout. The kitchen is sure to impress with custom cabinets, quartz countertops, large island, and slate steel appliances. Additional highlights include LP siding, luxury vinyl plank flooring, 3 panel doors, covered front porch, forced air heating & in-floor radiant heat, central air, heated garage, on-demand hot water system. This home combines quality craftsmanship, modern finishes, and an unbeatable location—don't miss this chance to make it yours!

Additional Details:

Year Built	2025
Lot Acres	0.53
Lot Dimensions	90x203x140x203
Garage Stalls	3
School District	181
Taxes	\$350
Taxes with Assessments	\$350
Tax Year	2024

Additional Features:

Basement: None **Fuel:** Electric, Natural Gas **Garage:** 3 **Heat:** Forced Air, Hot Water, Radiant Floor **Sewer:** City Sewer/Connected **Water:** City Water/Connected **Air Conditioning:** Central Air

Driving Directions:

From Brainerd - East on Riverside Dr - Left on Ashmun Rd - Right on Old Stonebridge Trail to property on right.



Listed By:
NextHome Horizons

Affinity Real Estate Inc. participates in the Regional Multiple Listing Service of Minnesota, Inc Broker Reciprocity (sm) program, allowing us to display other broker's listings on our website. All properties are subject to prior sale, change or withdrawal.



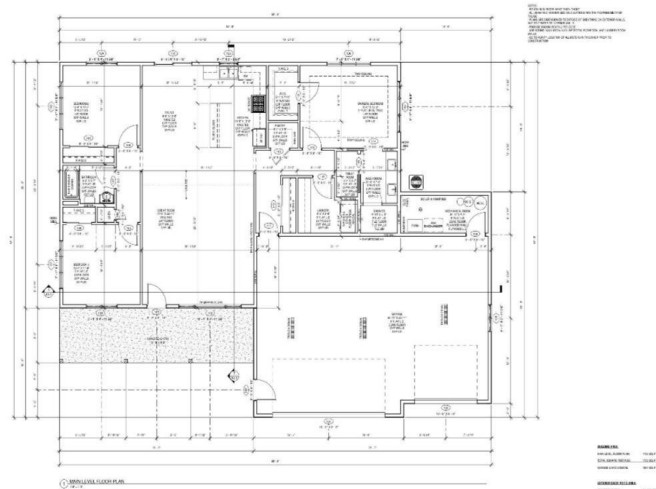
Call Affinity Real Estate

218-237-3333

info@affinityrealestate.com



Affinity Real Estate - 600 Park Avenue South - Park Rapids MN 56470

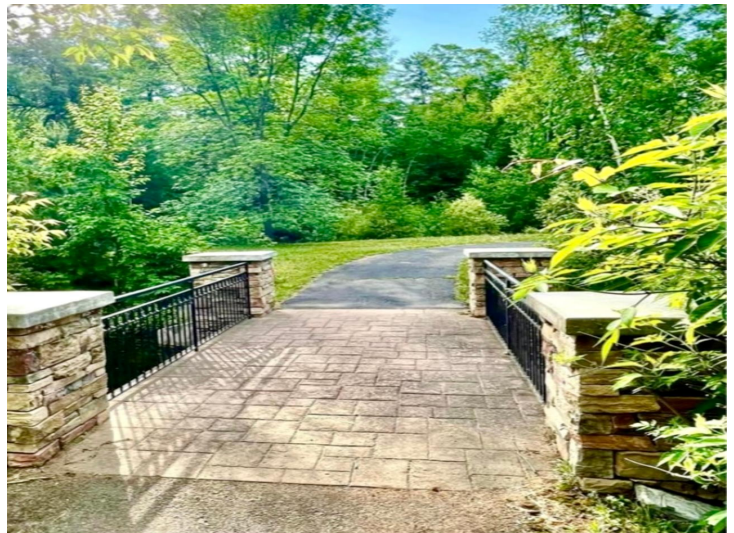
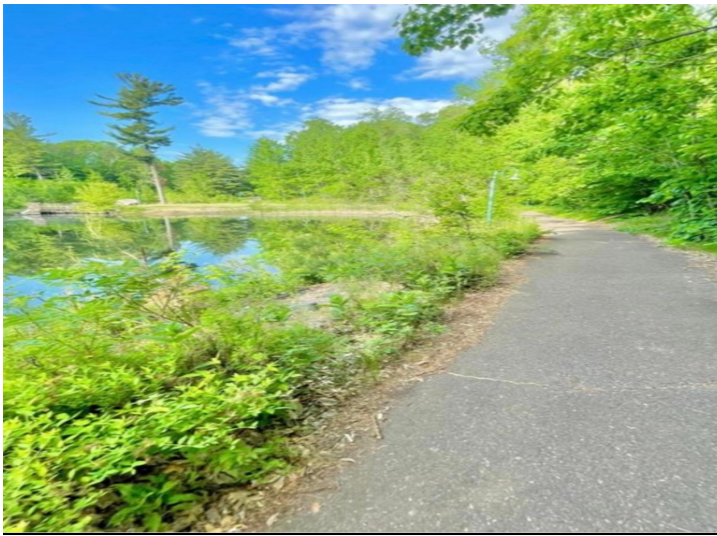
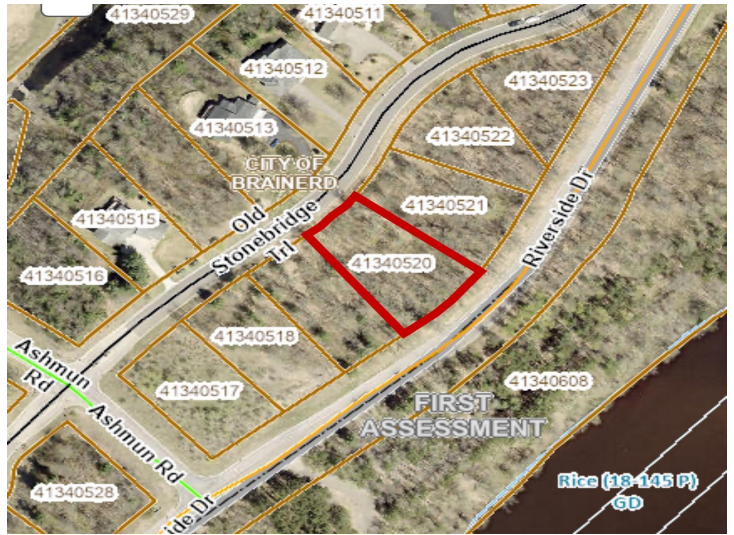


website: www.AffinityRealEstate.com | email: info@affinityrealestate.com | office: 218-237-3333 | fax: 218-237-3377



\$582,625

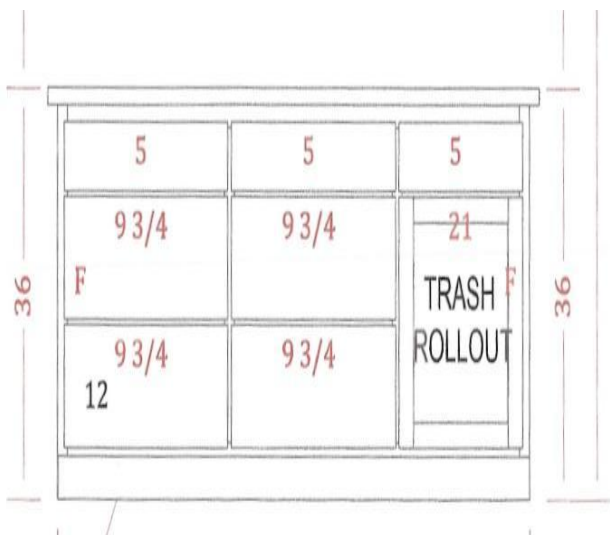
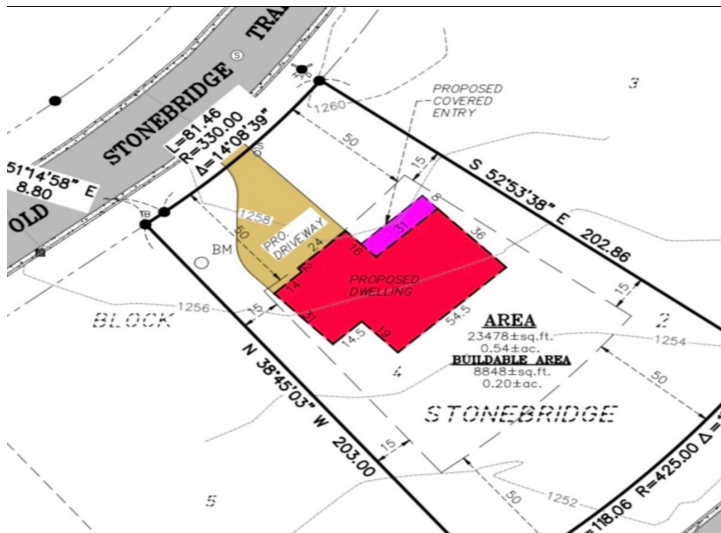
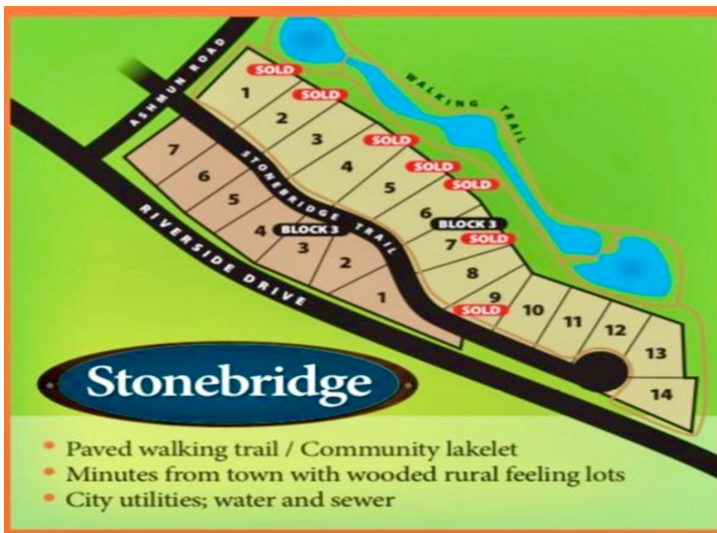
MLS 6777431 Residential
15828 Old Stonebridge Trail
Brainerd MN 56401



website: www.AffinityRealEstate.com | email: info@affinityrealestate.com | office: 218-237-3333 | fax: 218-237-3377

Affinity
REAL ESTATE INC

\$582,625
MLS 6777431 Residential
15828 Old Stonebridge Trail
Brainerd MN 56401



website: www.AffinityRealEstate.com | email: info@affinityrealestate.com | office: 218-237-3333 | fax: 218-237-3377

Affinity
REAL ESTATE INC

\$582,625

MLS 6777431 Residential
15828 Old Stonebridge Trail
Brainerd MN 56401

website: www.AffinityRealEstate.com | email: info@affinityrealestate.com | office: 218-237-3333 | fax:218-237-3377



\$582,625

MLS 6777431 Residential
15828 Old Stonebridge Trail
Brainerd MN 56401

website: www.AffinityRealEstate.com | email: info@affinityrealestate.com | office: 218-237-3333 | fax:218-237-3377



\$582,625

MLS 6777431 Residential
15828 Old Stonebridge Trail
Brainerd MN 56401