



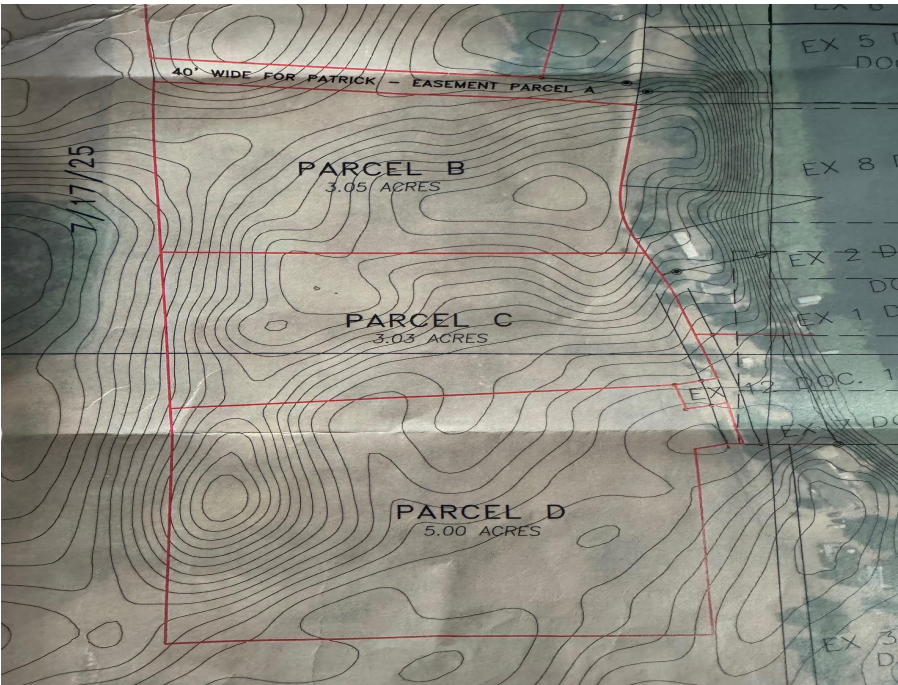
MLS 6777433 Land

**\$42,000**

3 Acres  
Raw Land

TBD Placid Drive  
Dent MN 56528

Status: Active



**Description:**

Whether you're looking for a new home site or a back lot to build your new shed or Shouse, this property just may be for you! This 3-acre lot (parcel C) overlooks Pickerel Lake and has a stunning landscape that will host the nicest home, large shed, or summer camping site. No restrictive covenants, with plenty of nature and hiking on your own property.

**Additional Details:**

Lot Acres	3
Lot Dimensions	162x502x275x468
School District	549
Taxes	(unreported)
Taxes with Assessments	(unreported)
Tax Year	2025

**Additional Features:**

**Driving Directions:**

from Dent: 2 miles West on Hwy 108, left on Placid Dr, follow signs.



Listed By:  
Coldwell Banker Preferred Partners

Affinity Real Estate Inc. participates in the Regional Multiple Listing Service of Minnesota, Inc Broker Reciprocity (sm) program, allowing us to display other broker's listings on our website. All properties are subject to prior sale, change or withdrawal.



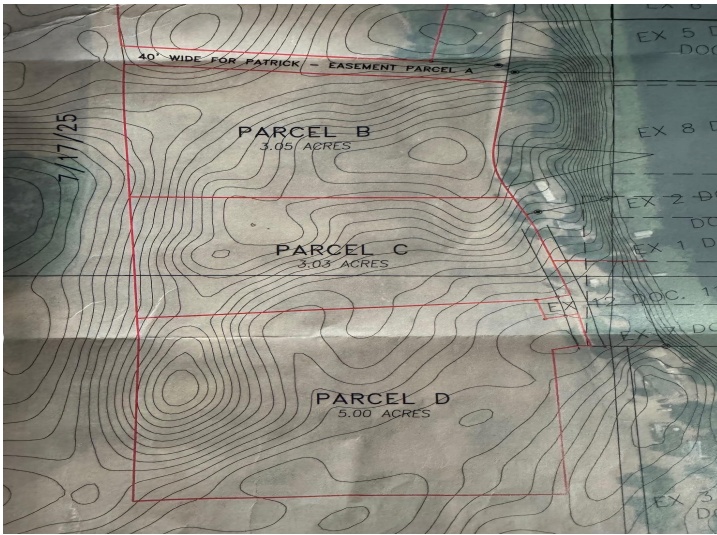
Call Affinity Real Estate

**218-237-3333**

[info@affinityrealestate.com](mailto:info@affinityrealestate.com)



Affinity Real Estate - 600 Park Avenue South - Park Rapids MN 56470



website: [www.AffinityRealEstate.com](http://www.AffinityRealEstate.com) | email: [info@affinityrealestate.com](mailto:info@affinityrealestate.com) | office: 218-237-3333 | fax: 218-237-3377



**\$42,000**  
MLS 6777433 Land  
TBD Placid Drive  
Dent MN 56528