



MLS 6777696 Land

\$89,900

18.47 Acres
Raw Land

TBD County Rd 13
Nevis MN 56467

Status: Active

Description:

Here is a wonderful acreage just a few miles South of the popular town of Nevis. This one would make a great building site, hunting parcel or just camp and enjoy the many local recreational opportunities. Locally called the "Schoolyard" it used to be the site of the local school during the early 1900's. With a nice variety of trees, meadows and wetland this property has great potential. Come and see what your vision might be!

Additional Details:

Lot Acres	18.47
Lot Dimensions	Irregular
School District	308
Taxes	\$218
Taxes with Assessments	\$218
Tax Year	2025

Additional Features:

Driving Directions:

Because of construction the recommended directions would be from Park Rapids go East on State 34. Turn right or South on County Rd 11, turn left or East on County Rd 17, turn left or East onto County Rd 13 and property is immediately on your left.



Listed By:
Affinity Real Estate Inc.

Affinity Real Estate Inc. participates in the Regional Multiple Listing Service of Minnesota, Inc Broker Reciprocity (sm) program, allowing us to display other broker's listings on our website. All properties are subject to prior sale, change or withdrawal.



Call Affinity Real Estate

218-237-3333

info@affinityrealestate.com



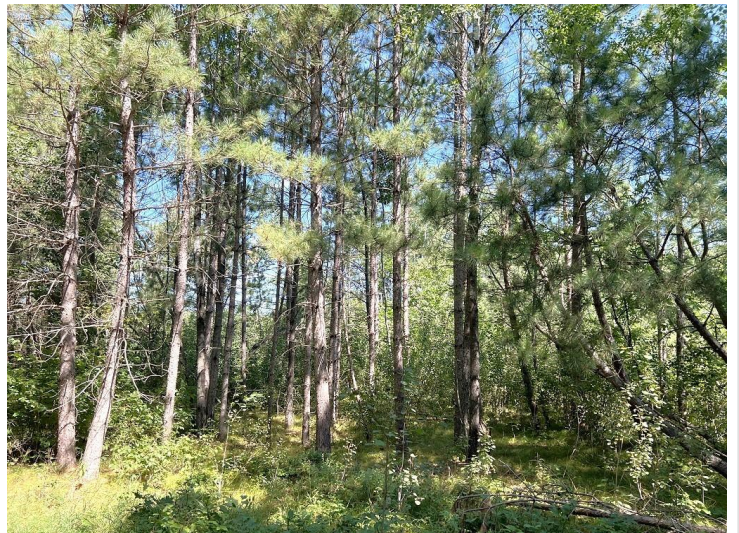
Affinity Real Estate - 600 Park Avenue South - Park Rapids MN 56470



website: www.AffinityRealEstate.com | email: info@affinityrealestate.com | office: 218-237-3333 | fax: 218-237-3377



\$89,900
 MLS 6777696 Land
 TBD County Rd 13
 Nevis MN 56467

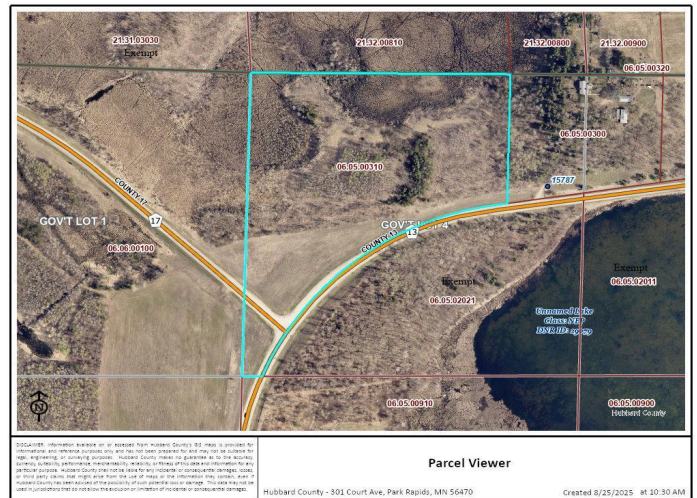


website: www.AffinityRealEstate.com | email: info@affinityrealestate.com | office: 218-237-3333 | fax: 218-237-3377



\$89,900

MLS 6777696 Land
TBD County Rd 13
Nevis MN 56467



website: www.AffinityRealEstate.com | email: info@affinityrealestate.com | office: 218-237-3333 | fax: 218-237-3377



\$89,900
 MLS 6777696 Land
 TBD County Rd 13
 Nevis MN 56467