



MLS 6777823 Lake Land

\$149,000

Description:

You will be surrounded by nature while enjoying stunning lake views from this south-facing, walkout lot on beautiful Mayo Lake. Located in the heart of the LAKES AREA between the cities of NISSWA and PEQUOT LAKES, this ideal location offers quick and easy access to fine and casual dining options, multiple lakes, championship golf courses, and the Paurl Bunyan State Bike/Snowmobile Trail. Mayo Lake is connected to Sibley Lake, which offers an additional 436 acres of navigable waters. The property has been surveyed and is ready for your new UP-NORTH DREAM HOME!

Additional Details:

Lot Acres	0.8
Lot Dimensions	100x382x115x330
School District	186
Taxes	\$1,108
Taxes with Assessments	\$1,108
Tax Year	2025

Additional Features:

Driving Directions:

From Nisswa, Take Hwy 371 North to left on County Rd 168 to left on S. Sluetter Rd SW to sign and property on the right.



Listed By:
Kurilla Real Estate LTD

Affinity Real Estate Inc. participates in the Regional Multiple Listing Service of Minnesota, Inc Broker Reciprocity (sm) program, allowing us to display other broker's listings on our website. All properties are subject to prior sale, change or withdrawal.



Call Affinity Real Estate

218-237-3333

info@affinityrealestate.com



Affinity Real Estate - 600 Park Avenue South - Park Rapids MN 56470



website: www.AffinityRealEstate.com | email: info@affinityrealestate.com | office: 218-237-3333 | fax: 218-237-3377



\$149,000

MLS 6777823 Lake Land
TBD Lot 2, Blk 5 Sleutter
Road SW
Pequot Lakes MN 56472



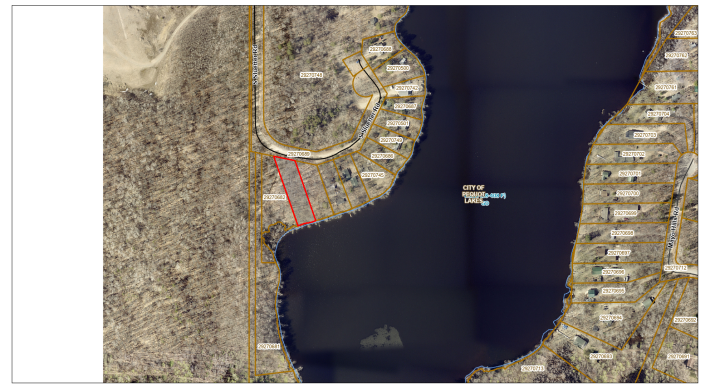
website: www.AffinityRealEstate.com | email: info@affinityrealestate.com | office: 218-237-3333 | fax: 218-237-3377



\$149,000
 MLS 6777823 Lake Land
 TBD Lot 2, Blk 5 Sleutter
 Road SW
 Pequot Lakes MN 56472



29270683 0, PEQUOT LAKES, MN, 56472



March 18, 2025

1:2,750
0 0.03 0.07 0.13 mi
0 0.06 0.1 0.2 km

Draw Using MFL Property Information

website: www.AffinityRealEstate.com | email: info@affinityrealestate.com | office: 218-237-3333 | fax: 218-237-3377



\$149,000
MLS 6777823 Lake Land
TBD Lot 2, Blk 5 Sleutter
Road SW
Pequot Lakes MN 56472