



MLS 6777858 Lake Home

**\$282,000**

830 sq ft  
1 bedrooms  
1 baths

715 Lake Shore Drive  
Bemidji MN 56601

Waterfront: Bemidji (main lake)

Status: Active

**Description:**

Experience the stunning beauty of sunsets over the South Shores of Lake Bemidji from your private balcony. Unit 213 is situated on the top floor of the Bixby Condominiums. This modern and elegant one-bedroom unit features an Onyx walk-in shower, open-concept living and dining area, quartz countertops, and a kitchen island. The panoramic views from your lakeside unit are breathtaking. Whether you're watching fireworks on the 4th of July or the lighting of the Christmas lights, you'll enjoy front-row seats without the crowds.

**Additional Details:**

Year Built	2021
Lot Dimensions	348x228
Garage Stalls	1
School District	31
Taxes	\$3,686
Taxes with Assessments	\$3,686
Tax Year	2025

**Additional Features:**

**Basement:** None **Fuel:** Electric **Garage:** 1 **Heat:** Ductless Mini-Split, Heat Pump **Sewer:** City Sewer/Connected **Water:** City Water/Connected  
**Air Conditioning:** Ductless Mini-Split

**Driving Directions:**

East on 1st Street to Central Ave SE, Left to Lakeshore Drive



Listed By:  
Lake-N-Woods Realty

Affinity Real Estate Inc. participates in the Regional Multiple Listing Service of Minnesota, Inc Broker Reciprocity (sm) program, allowing us to display other broker's listings on our website. All properties are subject to prior sale, change or withdrawal.



**Call Affinity Real Estate**

**218-237-3333**

**info@affinityrealestate.com**



**Affinity Real Estate - 600 Park Avenue South - Park Rapids MN 56470**



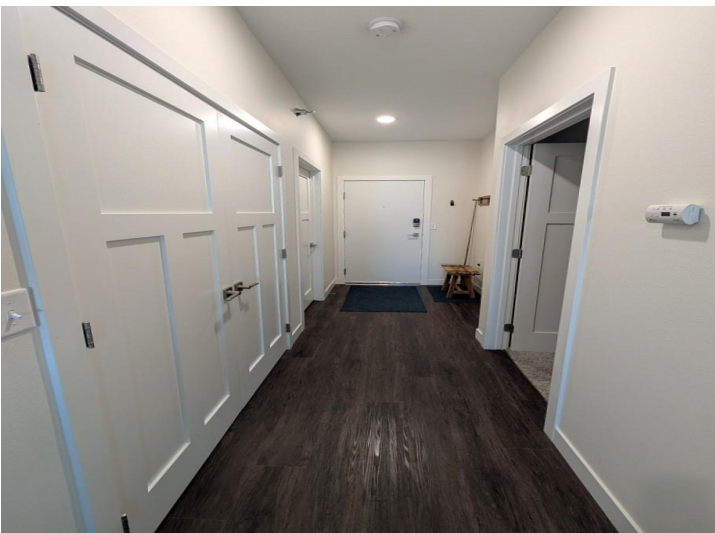


website: [www.AffinityRealEstate.com](http://www.AffinityRealEstate.com) | email: [info@affinityrealestate.com](mailto:info@affinityrealestate.com) | office: 218-237-3333 | fax: 218-237-3377



**\$282,000**  
 MLS 6777858 Lake Home  
 715 Lake Shore Drive  
 Bemidji MN 56601





website: [www.AffinityRealEstate.com](http://www.AffinityRealEstate.com) | email: [info@affinityrealestate.com](mailto:info@affinityrealestate.com) | office: 218-237-3333 | fax: 218-237-3377



**\$282,000**  
 MLS 6777858 Lake Home  
 715 Lake Shore Drive  
 Bemidji MN 56601





website: [www.AffinityRealEstate.com](http://www.AffinityRealEstate.com) | email: [info@affinityrealestate.com](mailto:info@affinityrealestate.com) | office: 218-237-3333 | fax: 218-237-3377



**\$282,000**  
MLS 6777858 Lake Home  
715 Lake Shore Drive  
Bemidji MN 56601



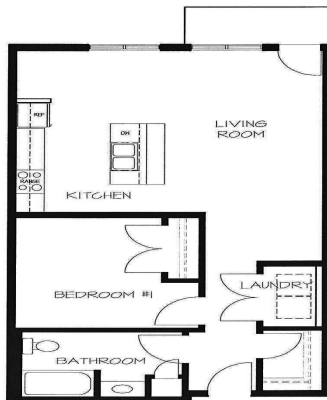


website: [www.AffinityRealEstate.com](http://www.AffinityRealEstate.com) | email: [info@affinityrealestate.com](mailto:info@affinityrealestate.com) | office: 218-237-3333 | fax: 218-237-3377

**Affinity**  
REAL ESTATE INC

**\$282,000**  
MLS 6777858 Lake Home  
715 Lake Shore Drive  
Bemidji MN 56601





website: [www.AffinityRealEstate.com](http://www.AffinityRealEstate.com) | email: [info@affinityrealestate.com](mailto:info@affinityrealestate.com) | office: 218-237-3333 | fax: 218-237-3377



**\$282,000**  
 MLS 6777858 Lake Home  
 715 Lake Shore Drive  
 Bemidji MN 56601