



MLS 6777903 Lake Home

\$898,000

2,088 sq ft
4 bedrooms
2 baths

4117 Roy Lake Drive
Nisswa MN 56468

Waterfront: Roy

Status: Hold

Description:

This is a must see on the Gull Chain! Picturesque Roy Lake year-round home with four bedrooms and two bathrooms. Sunset views amongst the pines on a wraparound deck. Hard sand bottom lake perfect for swimming and recreation. Professionally landscaped grounds along with a detached garage to store your vehicle, with a workshop potential and extra storage. Home has warm, white pine walls with vaulted beam ceilings and two wood burning fireplaces for those cozy fall days and snowy winters. Kitchen has been updated with custom cabinets and granite countertops. Great opportunity to get on the Gull Chain, location is close to the heart of Nisswa for golf, shopping and all the best restaurants.

Additional Details:

Year Built	1976
Lot Acres	0.62
Lot Dimensions	100x267x100x273
Garage Stalls	1
School District	181
Taxes	\$5,157
Taxes with Assessments	\$5,182
Tax Year	2025

Additional Features:

Fuel: Electric **Heat:** Baseboard, Fireplace(s), Radiant

Driving Directions:

From the 371/77 intersection in Nisswa, north on 371 to Hazelwood Drive (left), follow Hazelwood Drive to Lower Roy Lake Road (left) to East Roy Lake Road (right) then take the next left on to Roy Lake Drive to property on the left.



Listed By:
Kurilla Real Estate LTD

Affinity Real Estate Inc. participates in the Regional Multiple Listing Service of Minnesota, Inc Broker Reciprocity (sm) program, allowing us to display other broker's listings on our website. All properties are subject to prior sale, change or withdrawal.



Call Affinity Real Estate

218-237-3333

info@affinityrealestate.com



Affinity Real Estate - 600 Park Avenue South - Park Rapids MN 56470



website: www.AffinityRealEstate.com | email: info@affinityrealestate.com | office: 218-237-3333 | fax: 218-237-3377

Affinity
REAL ESTATE INC

\$898,000
MLS 6777903 Lake Home
4117 Roy Lake Drive
Nisswa MN 56468

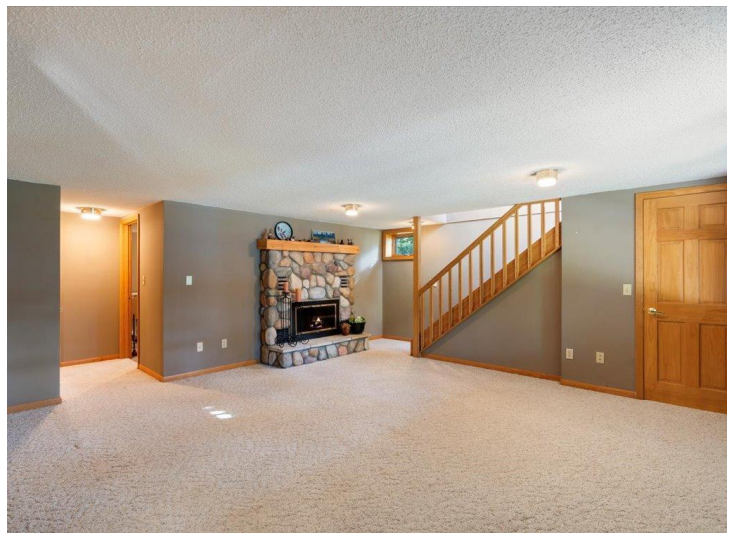


website: www.AffinityRealEstate.com | email: info@affinityrealestate.com | office: 218-237-3333 | fax: 218-237-3377

Affinity
REAL ESTATE INC

\$898,000

MLS 6777903 Lake Home
4117 Roy Lake Drive
Nisswa MN 56468



website: www.AffinityRealEstate.com | email: info@affinityrealestate.com | office: 218-237-3333 | fax: 218-237-3377

Affinity
REAL ESTATE INC

\$898,000
MLS 6777903 Lake Home
4117 Roy Lake Drive
Nisswa MN 56468



website: www.AffinityRealEstate.com | email: info@affinityrealestate.com | office: 218-237-3333 | fax: 218-237-3377



\$898,000
MLS 6777903 Lake Home
4117 Roy Lake Drive
Nisswa MN 56468



website: www.AffinityRealEstate.com | email: info@affinityrealestate.com | office: 218-237-3333 | fax: 218-237-3377



\$898,000
MLS 6777903 Lake Home
4117 Roy Lake Drive
Nisswa MN 56468



website: www.AffinityRealEstate.com | email: info@affinityrealestate.com | office: 218-237-3333 | fax: 218-237-3377

Affinity
REAL ESTATE INC

\$898,000
MLS 6777903 Lake Home
4117 Roy Lake Drive
Nisswa MN 56468



website: www.AffinityRealEstate.com | email: info@affinityrealestate.com | office: 218-237-3333 | fax: 218-237-3377

Affinity
REAL ESTATE INC

\$898,000

MLS 6777903 Lake Home
4117 Roy Lake Drive
Nisswa MN 56468