



MLS 6778510 Residential

**\$435,000**

2,768 sq ft  
4 bedrooms  
2 baths

14126 Oak Hollow Road  
Brainerd MN 56401

Status: Pending

**Description:**

Country privacy in this beautifully updated home on 2.5 wooded acres. The bright, open floor plan with high vaulted ceilings and flow for everyday living and entertaining. The kitchen boasts granite countertops and modern fixtures, while new flooring and generous walk-in closets add comfort and storage. Recent mechanical updates include a newer roof and furnace. A poured concrete basement, low-maintenance exterior, and a heated, insulated attached garage provide long-term value. Quiet, private, and centrally located.

**Additional Details:**

Year Built	2001
Lot Acres	2.54
Lot Dimensions	284 x 388
Garage Stalls	2
School District	896
Taxes	\$2,105
Taxes with Assessments	\$2,130
Tax Year	2025

**Additional Features:**

**Fuel:** Array **Heat:** Forced Air

**Driving Directions:**

From Brainerd Highway #210 East To The Intersection Of #18 and #25. Turn Left On To State Highway #18 Go 2.2 Miles, To Left On To Oak Hollow Road To The Property On The Left.



Listed By:  
Edina Realty, Inc.

Affinity Real Estate Inc. participates in the Regional Multiple Listing Service of Minnesota, Inc Broker Reciprocity (sm) program, allowing us to display other broker's listings on our website. All properties are subject to prior sale, change or withdrawal.



**Call Affinity Real Estate**

**218-237-3333**

**info@affinityrealestate.com**



**Affinity Real Estate - 600 Park Avenue South - Park Rapids MN 56470**



website: [www.AffinityRealEstate.com](http://www.AffinityRealEstate.com) | email: [info@affinityrealestate.com](mailto:info@affinityrealestate.com) | office: 218-237-3333 | fax:218-237-3377

**Affinity**  
REAL ESTATE INC

**\$435,000**  
MLS 6778510 Residential  
14126 Oak Hollow Road  
Brainerd MN 56401



website: [www.AffinityRealEstate.com](http://www.AffinityRealEstate.com) | email: [info@affinityrealestate.com](mailto:info@affinityrealestate.com) | office: 218-237-3333 | fax:218-237-3377

**Affinity**  
REAL ESTATE INC

**\$435,000**  
MLS 6778510 Residential  
14126 Oak Hollow Road  
Brainerd MN 56401



website: [www.AffinityRealEstate.com](http://www.AffinityRealEstate.com) | email: [info@affinityrealestate.com](mailto:info@affinityrealestate.com) | office: 218-237-3333 | fax:218-237-3377

**Affinity**  
REAL ESTATE INC

**\$435,000**  
MLS 6778510 Residential  
14126 Oak Hollow Road  
Brainerd MN 56401



website: [www.AffinityRealEstate.com](http://www.AffinityRealEstate.com) | email: [info@affinityrealestate.com](mailto:info@affinityrealestate.com) | office: 218-237-3333 | fax:218-237-3377

**Affinity**  
REAL ESTATE INC

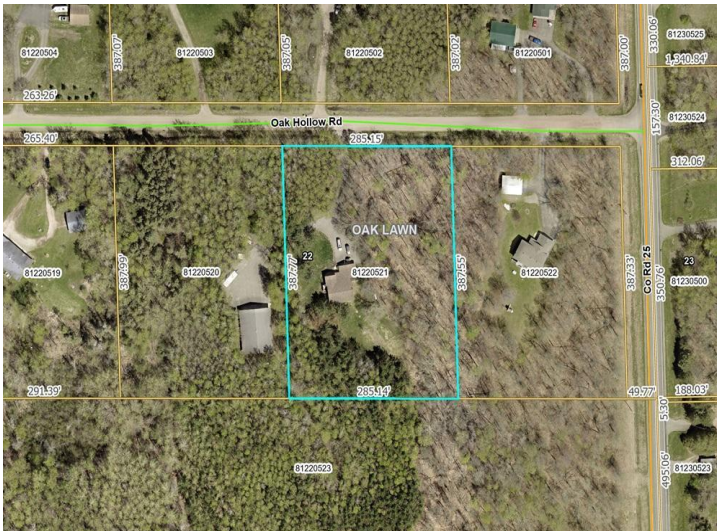
**\$435,000**  
MLS 6778510 Residential  
14126 Oak Hollow Road  
Brainerd MN 56401



website: [www.AffinityRealEstate.com](http://www.AffinityRealEstate.com) | email: [info@affinityrealestate.com](mailto:info@affinityrealestate.com) | office: 218-237-3333 | fax:218-237-3377



**\$435,000**  
MLS 6778510 Residential  
14126 Oak Hollow Road  
Brainerd MN 56401



website: [www.AffinityRealEstate.com](http://www.AffinityRealEstate.com) | email: [info@affinityrealestate.com](mailto:info@affinityrealestate.com) | office: 218-237-3333 | fax: 218-237-3377



**\$435,000**  
MLS 6778510 Residential  
14126 Oak Hollow Road  
Brainerd MN 56401