



MLS 6778551 Commercial

\$2,950,000

6436 County Road 11
Pequot Lakes MN 56472

Status: Active

Description:

Seller to sub-divide the sale parcel to +/- 33 acres and will maintain a portion of the property for continued use. This is an opportunity to acquire a clean and well-maintained light manufacturing and office property situated on +/- 33 acres located along Highway 11 in Pequot Lakes, MN; only minutes away Breezy Points, Nisswa and Brainerd, MN. This property is zoned for Light Industrial by the city and is open to various land uses and redevelopment options. The building is extremely high-quality construction consisting of tilt-up insulated concrete panels, abundant exterior windows, concrete spanned floor decking, and concrete roof decking, and offers significant parking area and private setting. There are other exterior building structures located in the SE corner of the Property. The property is being offered for Sale AS-IS and will be vacated by the existing building owner.

Additional Details:

| | |
|------------------------|---------------|
| Year Built | 1999 |
| Lot Acres | 39.81 |
| Lot Dimensions | 1,316 x 1,322 |
| School District | 186 |
| Taxes | \$65,586 |
| Taxes with Assessments | \$65,586 |
| Tax Year | 2024 |

Additional Features:

Fuel: Natural Gas **Heat:** Zoned **Sewer:** Septic System Compliant - Yes, Tank with Drainage Field **Water:** Well **Air Conditioning:** Central Air

Driving Directions:

North on MN 371, East on Couty Road 11, to Property.



Listed By:
NAI Legacy

Affinity Real Estate Inc. participates in the Regional Multiple Listing Service of Minnesota, Inc Broker Reciprocity (sm) program, allowing us to display other broker's listings on our website. All properties are subject to prior sale, change or withdrawal.



Call Affinity Real Estate

218-237-3333

info@affinityrealestate.com



Affinity Real Estate - 600 Park Avenue South - Park Rapids MN 56470



website: www.AffinityRealEstate.com | email: info@affinityrealestate.com | office: 218-237-3333 | fax: 218-237-3377



\$2,950,000

MLS 6778551 Commercial
6436 County Road 11
Pequot Lakes MN 56472



website: www.AffinityRealEstate.com | email: info@affinityrealestate.com | office: 218-237-3333 | fax: 218-237-3377



\$2,950,000

MLS 6778551 Commercial
6436 County Road 11
Pequot Lakes MN 56472



website: www.AffinityRealEstate.com | email: info@affinityrealestate.com | office: 218-237-3333 | fax: 218-237-3377



\$2,950,000

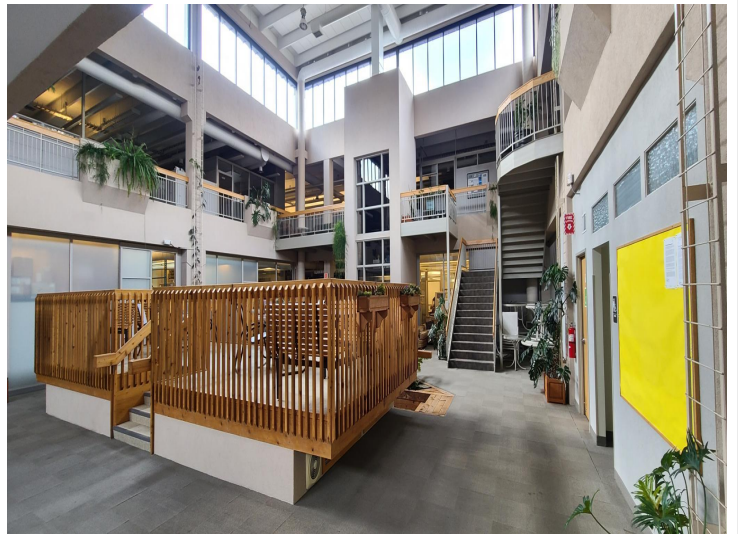
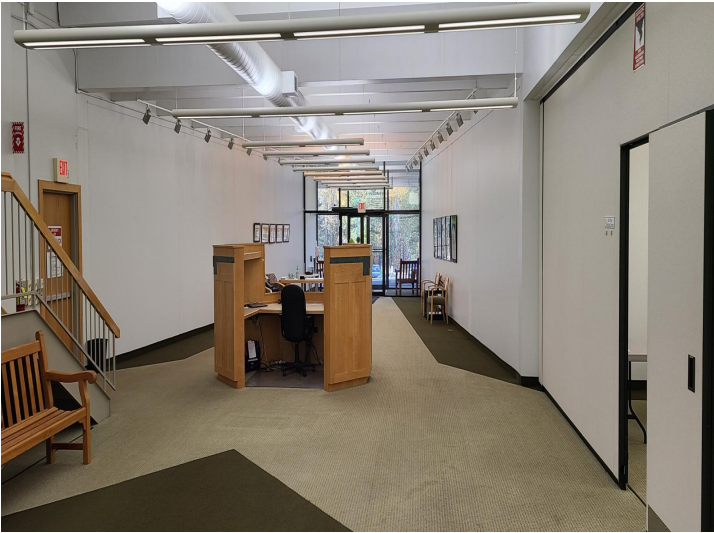
MLS 6778551 Commercial
6436 County Road 11
Pequot Lakes MN 56472



website: www.AffinityRealEstate.com | email: info@affinityrealestate.com | office: 218-237-3333 | fax: 218-237-3377

Affinity
REAL ESTATE INC

\$2,950,000
MLS 6778551 Commercial
6436 County Road 11
Pequot Lakes MN 56472



website: www.AffinityRealEstate.com | email: info@affinityrealestate.com | office: 218-237-3333 | fax: 218-237-3377



\$2,950,000
 MLS 6778551 Commercial
 6436 County Road 11
 Pequot Lakes MN 56472



website: www.AffinityRealEstate.com | email: info@affinityrealestate.com | office: 218-237-3333 | fax: 218-237-3377



\$2,950,000
 MLS 6778551 Commercial
 6436 County Road 11
 Pequot Lakes MN 56472



website: www.AffinityRealEstate.com | email: info@affinityrealestate.com | office: 218-237-3333 | fax: 218-237-3377



\$2,950,000

MLS 6778551 Commercial
6436 County Road 11
Pequot Lakes MN 56472



website: www.AffinityRealEstate.com | email: info@affinityrealestate.com | office: 218-237-3333 | fax:218-237-3377



\$2,950,000

MLS 6778551 Commercial
6436 County Road 11
Pequot Lakes MN 56472

website: www.AffinityRealEstate.com | email: info@affinityrealestate.com | office: 218-237-3333 | fax:218-237-3377



\$2,950,000

MLS 6778551 Commercial
6436 County Road 11
Pequot Lakes MN 56472

website: www.AffinityRealEstate.com | email: info@affinityrealestate.com | office: 218-237-3333 | fax:218-237-3377



\$2,950,000

MLS 6778551 Commercial
6436 County Road 11
Pequot Lakes MN 56472

website: www.AffinityRealEstate.com | email: info@affinityrealestate.com | office: 218-237-3333 | fax:218-237-3377



\$2,950,000

MLS 6778551 Commercial
6436 County Road 11
Pequot Lakes MN 56472

website: www.AffinityRealEstate.com | email: info@affinityrealestate.com | office: 218-237-3333 | fax:218-237-3377



\$2,950,000

MLS 6778551 Commercial
6436 County Road 11
Pequot Lakes MN 56472