



MLS 6778558 Residential

**\$425,000**

1,517 sq ft  
3 bedrooms  
2 baths

4218 See Gull Cove  
Brainerd MN 56401

Status: Active

**Description:**

Perfectly situated between Baxter and Nisswa, this home offers the best of convenience and privacy. Nestled on a .51 acre lot surrounded by towering pines, you'll enjoy the serene, wooded setting while still being close to town. Inside you'll find 3 bedrooms, 2 bathrooms, and a functional open layout with all living facilities on one level. The kitchen features stainless steel appliances and granite countertops, while the primary suite includes a private bath with a walk-in shower. Additional highlights include a two-stall garage, no internal or external stairs, and a low-maintenance exterior. A wonderful combination of comfort, style, and location! Model is finished and is move in ready!

**Additional Details:**

Year Built	2025
Lot Acres	0.51
Lot Dimensions	189x172x137x108
Garage Stalls	2
School District	896
Taxes	\$220
Taxes with Assessments	\$220
Tax Year	2024

**Additional Features:**

**Basement:** None **Fuel:** Array **Garage:** 2 **Heat:** Forced Air **Sewer:** Private Sewer, Tank with Drainage Field **Water:** Private, Well **Air Conditioning:** Central Air

**Driving Directions:**

From Baxter, take Hwy 371 North towards Nisswa. Turn left onto See Gull Road. Take a right onto See Gull Cove, the property will be on the left.



Listed By:  
Counselor Realty Brainerd Lakes

Affinity Real Estate Inc. participates in the Regional Multiple Listing Service of Minnesota, Inc Broker Reciprocity (sm) program, allowing us to display other broker's listings on our website. All properties are subject to prior sale, change or withdrawal.



**Call Affinity Real Estate**  
**218-237-3333**  
**info@affinityrealestate.com**



**Affinity Real Estate - 600 Park Avenue South - Park Rapids MN 56470**



website: [www.AffinityRealEstate.com](http://www.AffinityRealEstate.com) | email: [info@affinityrealestate.com](mailto:info@affinityrealestate.com) | office: 218-237-3333 | fax: 218-237-3377

**Affinity**  
REAL ESTATE INC

**\$425,000**  
MLS 6778558 Residential  
4218 See Gull Cove  
Brainerd MN 56401

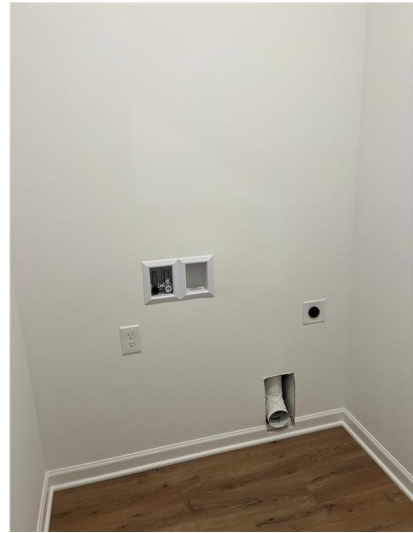




website: [www.AffinityRealEstate.com](http://www.AffinityRealEstate.com) | email: [info@affinityrealestate.com](mailto:info@affinityrealestate.com) | office: 218-237-3333 | fax: 218-237-3377



**\$425,000**  
MLS 6778558 Residential  
4218 See Gull Cove  
Brainerd MN 56401



website: [www.AffinityRealEstate.com](http://www.AffinityRealEstate.com) | email: [info@affinityrealestate.com](mailto:info@affinityrealestate.com) | office: 218-237-3333 | fax: 218-237-3377



**\$425,000**  
MLS 6778558 Residential  
4218 See Gull Cove  
Brainerd MN 56401

website: [www.AffinityRealEstate.com](http://www.AffinityRealEstate.com) | email: [info@affinityrealestate.com](mailto:info@affinityrealestate.com) | office: 218-237-3333 | fax: 218-237-3377



**\$425,000**

MLS 6778558 Residential  
4218 See Gull Cove  
Brainerd MN 56401

website: [www.AffinityRealEstate.com](http://www.AffinityRealEstate.com) | email: [info@affinityrealestate.com](mailto:info@affinityrealestate.com) | office: 218-237-3333 | fax: 218-237-3377



**\$425,000**

MLS 6778558 Residential  
4218 See Gull Cove  
Brainerd MN 56401

website: [www.AffinityRealEstate.com](http://www.AffinityRealEstate.com) | email: [info@affinityrealestate.com](mailto:info@affinityrealestate.com) | office: 218-237-3333 | fax:218-237-3377



**\$425,000**

MLS 6778558 Residential  
4218 See Gull Cove  
Brainerd MN 56401

website: [www.AffinityRealEstate.com](http://www.AffinityRealEstate.com) | email: [info@affinityrealestate.com](mailto:info@affinityrealestate.com) | office: 218-237-3333 | fax:218-237-3377



**\$425,000**

MLS 6778558 Residential  
4218 See Gull Cove  
Brainerd MN 56401