



MLS 6779017 Lake Home

\$569,000

3,232 sq ft
3 bedrooms
3 baths

16460 Park Estates Drive
Brainerd MN 56401

Waterfront: Clearwater

Status: Active

Description:

Gorgeous townhome on Clearwater Lake with 466' of association lake frontage. Very well maintained with two updated bathrooms with infloor heat. This is a must see with 3 bedrooms and 3 bathrooms with the primary on the main level along with main floor laundry. Hickory hardwood floors, cherry cabinets along with a vaulted great room with a stone/gas fireplace. Beautiful, manicured grounds and flower beds with a large outdoor patio to enjoy this serene setting. Upper level includes an office area, sitting area and two bedrooms. The lower level has a large family room with a wet bar. Beach area includes a pavilion with a bathroom, nice hard sand bottom for swimming and recreation.

Additional Details:

Year Built	2006
Lot Acres	0.06
Lot Dimensions	42x58
Garage Stalls	2
School District	181
Taxes	\$2,802
Taxes with Assessments	\$2,802
Tax Year	2025

Additional Features:

Basement: Block, Finished, Full **Fuel:** Propane **Garage:** 2 **Heat:** Forced Air, Fireplace(s) **Sewer:** Shared Septic, Tank with Drainage Field
Water: Drilled, Shared System, Well **Air Conditioning:** Central Air

Driving Directions:

From City of Brainerd, take HWY 18 East, turn Left on Nokay Lake Road (Cty Rd 8) to Park Estates and unit on end.



Listed By:
Kurilla Real Estate LTD

Affinity Real Estate Inc. participates in the Regional Multiple Listing Service of Minnesota, Inc Broker Reciprocity (sm) program, allowing us to display other broker's listings on our website. All properties are subject to prior sale, change or withdrawal.



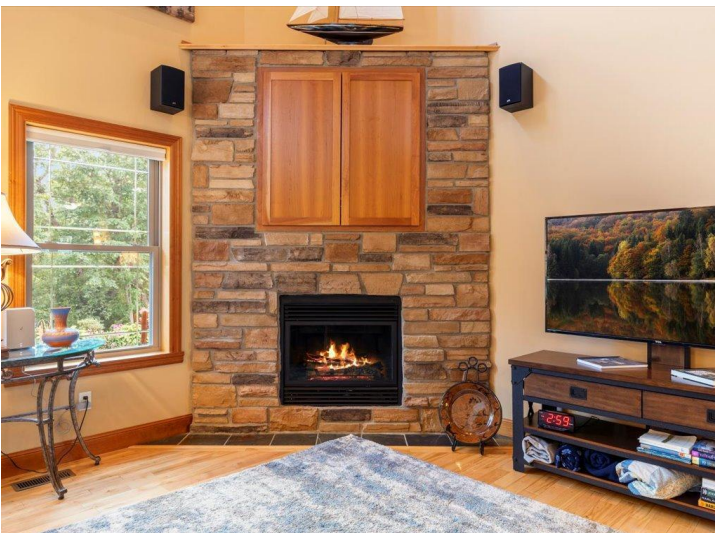
Call Affinity Real Estate

218-237-3333

info@affinityrealestate.com



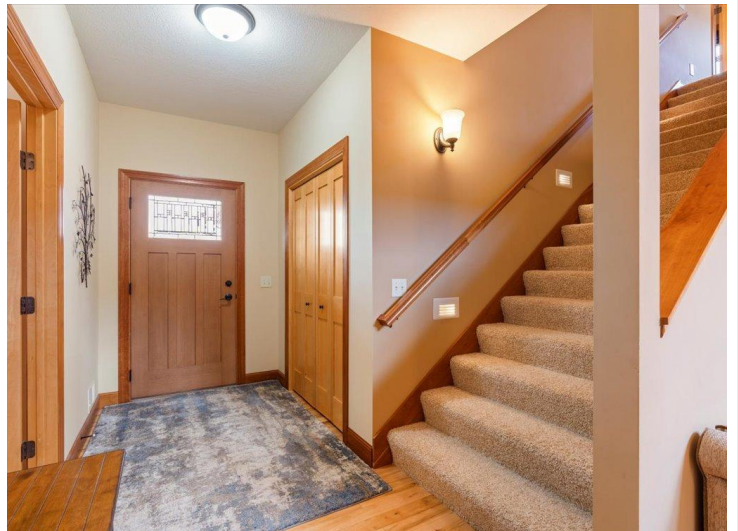
Affinity Real Estate - 600 Park Avenue South - Park Rapids MN 56470



website: www.AffinityRealEstate.com | email: info@affinityrealestate.com | office: 218-237-3333 | fax: 218-237-3377



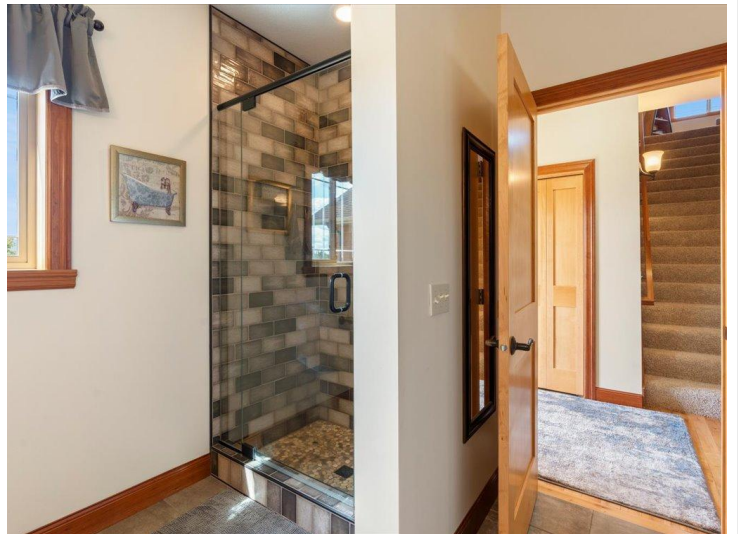
\$569,000
 MLS 6779017 Lake Home
 16460 Park Estates Drive
 Brainerd MN 56401



website: www.AffinityRealEstate.com | email: info@affinityrealestate.com | office: 218-237-3333 | fax: 218-237-3377

Affinity
REAL ESTATE INC

\$569,000
MLS 6779017 Lake Home
16460 Park Estates Drive
Brainerd MN 56401



website: www.AffinityRealEstate.com | email: info@affinityrealestate.com | office: 218-237-3333 | fax: 218-237-3377

Affinity
REAL ESTATE INC

\$569,000
MLS 6779017 Lake Home
16460 Park Estates Drive
Brainerd MN 56401



website: www.AffinityRealEstate.com | email: info@affinityrealestate.com | office: 218-237-3333 | fax: 218-237-3377

Affinity
REAL ESTATE INC

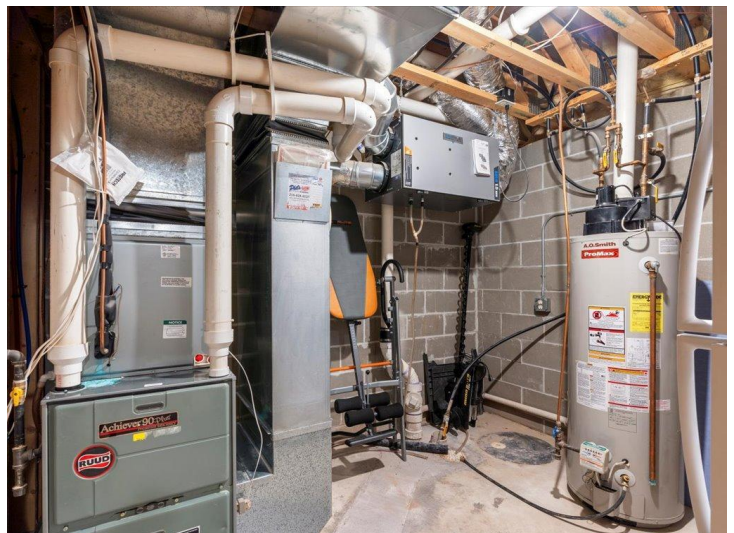
\$569,000
MLS 6779017 Lake Home
16460 Park Estates Drive
Brainerd MN 56401



website: www.AffinityRealEstate.com | email: info@affinityrealestate.com | office: 218-237-3333 | fax: 218-237-3377

Affinity
REAL ESTATE INC

\$569,000
MLS 6779017 Lake Home
16460 Park Estates Drive
Brainerd MN 56401



website: www.AffinityRealEstate.com | email: info@affinityrealestate.com | office: 218-237-3333 | fax: 218-237-3377

Affinity
REAL ESTATE INC

\$569,000
MLS 6779017 Lake Home
16460 Park Estates Drive
Brainerd MN 56401



website: www.AffinityRealEstate.com | email: info@affinityrealestate.com | office: 218-237-3333 | fax: 218-237-3377

Affinity
REAL ESTATE INC

\$569,000
MLS 6779017 Lake Home
16460 Park Estates Drive
Brainerd MN 56401



website: www.AffinityRealEstate.com | email: info@affinityrealestate.com | office: 218-237-3333 | fax: 218-237-3377



\$569,000
 MLS 6779017 Lake Home
 16460 Park Estates Drive
 Brainerd MN 56401



website: www.AffinityRealEstate.com | email: info@affinityrealestate.com | office: 218-237-3333 | fax: 218-237-3377



\$569,000

MLS 6779017 Lake Home
16460 Park Estates Drive
Brainerd MN 56401



website: www.AffinityRealEstate.com | email: info@affinityrealestate.com | office: 218-237-3333 | fax:218-237-3377



\$569,000

MLS 6779017 Lake Home
16460 Park Estates Drive
Brainerd MN 56401