



MLS 6779196 Land

\$1

101.67 Acres

Raw Land

48561 County Highway 36

Frazee MN 56544

Status: Active

Description:

Wolf Lake, MN area real estate auction. Live on-site auction with online bidding available Thursday, Sept. 25th at 2pm. Two adjoining parcels totaling 100 +/- acres, offering excellent building sites, hunting land, hobby farm potential, and investment opportunities. Lot 1: Parcel B on the survey (56.49 +/- acres) features mostly wooded terrain with open fields, ponds, and a mix of high and low ground, plus a 1-bedroom homestead with drilled well, electricity, and older septic system (compliance unknown). Homestead will need updates. Lot 2: Parcel A on the survey (45.18 +/- acres) offers similar wooded beauty with open areas, ponds, and a 4-inch drilled well. Both parcels have been surveyed. Located 18 miles northwest of Menahga, and 18.5 miles northeast of Frazee. Visit our auction site for online bidding. Live auction will be held at the property.

Additional Details:

Lot Acres	101.67
Lot Dimensions	101.67 acres
School District	23
Taxes	\$1,648
Taxes with Assessments	\$1,648
Tax Year	2025

Additional Features:

Driving Directions:

From Frazee head east on St. Hwy 87 for 15.2 miles, turn left and head north on Co Hwy 43 for 3 miles, turn right and head east on Co Hwy 36 for ½ mile to the property on the right side. From Wolf Lake go west on Co Hwy 36 for 1.5 miles.



Listed By:
Counselor Realty Detroit Lakes

Affinity Real Estate Inc. participates in the Regional Multiple Listing Service of Minnesota, Inc Broker Reciprocity (sm) program, allowing us to display other broker's listings on our website. All properties are subject to prior sale, change or withdrawal.



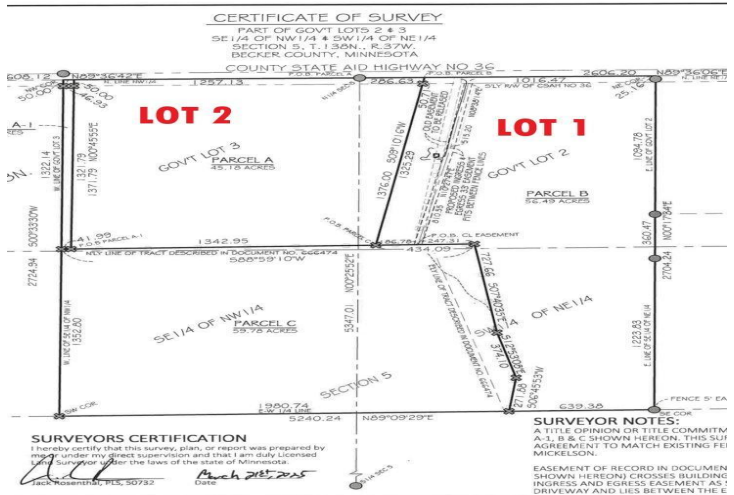
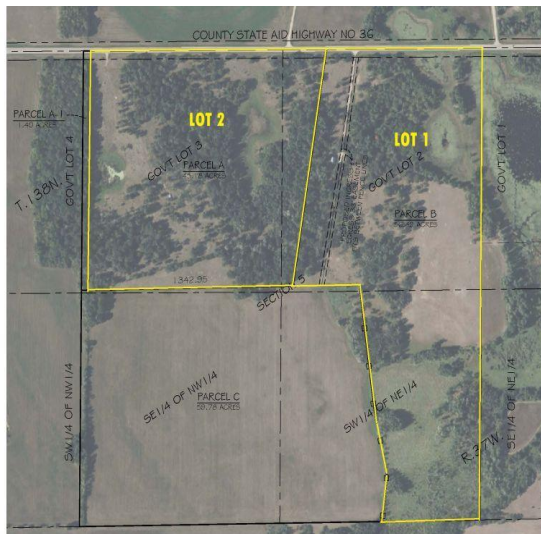
Call Affinity Real Estate

218-237-3333

info@affinityrealestate.com



Affinity Real Estate - 600 Park Avenue South - Park Rapids MN 56470



website: www.AffinityRealEstate.com | email: info@affinityrealestate.com | office: 218-237-3333 | fax: 218-237-3377

Affinity
 REAL ESTATE INC

\$1
 MLS 6779196 Land
 48561 County Highway 36
 Frazee MN 56544



website: www.AffinityRealEstate.com | email: info@affinityrealestate.com | office: 218-237-3333 | fax: 218-237-3377



\$1
 MLS 6779196 Land
 48561 County Highway 36
 Frazee MN 56544



website: www.AffinityRealEstate.com | email: info@affinityrealestate.com | office: 218-237-3333 | fax: 218-237-3377



\$1
 MLS 6779196 Land
 48561 County Highway 36
 Frazee MN 56544



website: www.AffinityRealEstate.com | email: info@affinityrealestate.com | office: 218-237-3333 | fax: 218-237-3377



\$1
MLS 6779196 Land
48561 County Highway 36
Frazee MN 56544



website: www.AffinityRealEstate.com | email: info@affinityrealestate.com | office: 218-237-3333 | fax: 218-237-3377

Affinity
REAL ESTATE INC

\$1
MLS 6779196 Land
48561 County Highway 36
Frazee MN 56544



website: www.AffinityRealEstate.com | email: info@affinityrealestate.com | office: 218-237-3333 | fax: 218-237-3377



\$1
 MLS 6779196 Land
 48561 County Highway 36
 Frazee MN 56544



website: www.AffinityRealEstate.com | email: info@affinityrealestate.com | office: 218-237-3333 | fax: 218-237-3377



\$1
 MLS 6779196 Land
 48561 County Highway 36
 Frazee MN 56544



website: www.AffinityRealEstate.com | email: info@affinityrealestate.com | office: 218-237-3333 | fax: 218-237-3377



\$1
MLS 6779196 Land
48561 County Highway 36
Frazee MN 56544