



MLS 6779418 Lake Land

\$265,000

Description:

Imagine waking up to the sound of loons, surrounded by towering pines, and spending your days fishing, boating, and exploring the pristine beauty of Minnesota's lake country. This rare 1.6-acre wooded lot on Lantern Bay of the highly sought-after Woman Lake is the ideal spot to build your private retreat. Bordered by DNR-owned land for added privacy, the property features 100 feet of shoreline and access to a shared dock. Perfect for your next outdoor adventure. Whether you're planning a rustic cabin or a custom lake home, with room for a pole barn, this lot offers everything you've been searching for. Located between Longville and Hackensack in a quiet, well-kept HOA (4 owners 2 docks), you'll enjoy a welcoming community with the freedom to create your own up north lifestyle. Take advantage of the shared dock or bring your own to enjoy fishing, boating, and the breathtaking beauty of the lake. Schedule your visit today and start planning your perfect escape!

Additional Details:

Lot Acres	1.6
Lot Dimensions	100x700x100x700
School District	113
Taxes	\$224
Taxes with Assessments	\$224
Tax Year	2025

Additional Features:

Driving Directions:

Coming from the city of Longville head WEST on County Rd 5, LEFT onto Timber Drive, RIGHT on Lantern Trail, RIGHT at T, property is lot on left after the paved driveway. You can use paved driveway to park and access the lot.



Listed By:
RE/MAX Results

Affinity Real Estate Inc. participates in the Regional Multiple Listing Service of Minnesota, Inc Broker Reciprocity (sm) program, allowing us to display other broker's listings on our website. All properties are subject to prior sale, change or withdrawal.



Call Affinity Real Estate

218-237-3333

info@affinityrealestate.com



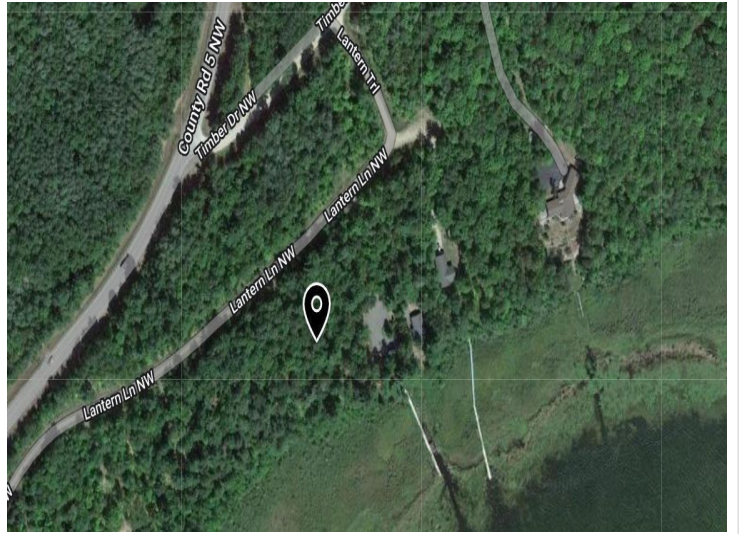
Affinity Real Estate - 600 Park Avenue South - Park Rapids MN 56470



website: www.AffinityRealEstate.com | email: info@affinityrealestate.com | office: 218-237-3333 | fax: 218-237-3377



\$265,000
MLS 6779418 Lake Land
TBD Lantern Lane
Hackensack MN 56655



website: www.AffinityRealEstate.com | email: info@affinityrealestate.com | office: 218-237-3333 | fax: 218-237-3377



\$265,000

MLS 6779418 Lake Land
TBD Lantern Lane
Hackensack MN 56655



website: www.AffinityRealEstate.com | email: info@affinityrealestate.com | office: 218-237-3333 | fax: 218-237-3377



\$265,000

MLS 6779418 Lake Land
TBD Lantern Lane
Hackensack MN 56655



website: www.AffinityRealEstate.com | email: info@affinityrealestate.com | office: 218-237-3333 | fax: 218-237-3377



\$265,000

MLS 6779418 Lake Land
TBD Lantern Lane
Hackensack MN 56655



website: www.AffinityRealEstate.com | email: info@affinityrealestate.com | office: 218-237-3333 | fax: 218-237-3377



\$265,000

MLS 6779418 Lake Land
TBD Lantern Lane
Hackensack MN 56655



website: www.AffinityRealEstate.com | email: info@affinityrealestate.com | office: 218-237-3333 | fax:218-237-3377



\$265,000
MLS 6779418 Lake Land
TBD Lantern Lane
Hackensack MN 56655