



MLS 6779451 Land

**\$75,000**

10 Acres  
Raw Land

Track B Hwy 87  
Backus MN 56435

Status: Active

**Description:**

Beautiful 10-acre parcel offering a blend of open space and mature woods, creating a versatile setting for your plans. The towering pines and hardwoods provide natural privacy, scenic beauty, and excellent wildlife habitat. Whether you envision building a home, establishing a hunting basecamp, or simply enjoying a private getaway, this land offers the flexibility to fit your needs. Conveniently located just south of Backus with year-round access, you'll be close to area lakes, trails, and public land for endless outdoor opportunities. A great spot to create your retreat or future homesite in the heart of northern Minnesota.

**Additional Details:**

|                        |                  |
|------------------------|------------------|
| Lot Acres              | 10               |
| Lot Dimensions         | 435x1119x435x891 |
| School District        | 2174             |
| Taxes                  | \$18             |
| Taxes with Assessments | \$18             |
| Tax Year               | 2025             |

**Additional Features:**

**Driving Directions:**

1.3 miles south of downtown Backus on Hwy 87, right at 90 degree curve to West on left side.



Listed By:  
Gallery of Homes

Affinity Real Estate Inc. participates in the Regional Multiple Listing Service of Minnesota, Inc Broker Reciprocity (sm) program, allowing us to display other broker's listings on our website. All properties are subject to prior sale, change or withdrawal.



**Call Affinity Real Estate**

**218-237-3333**

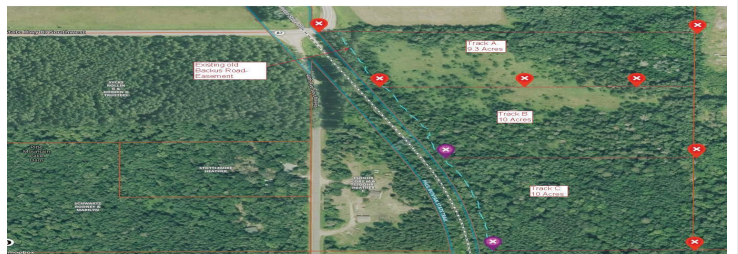
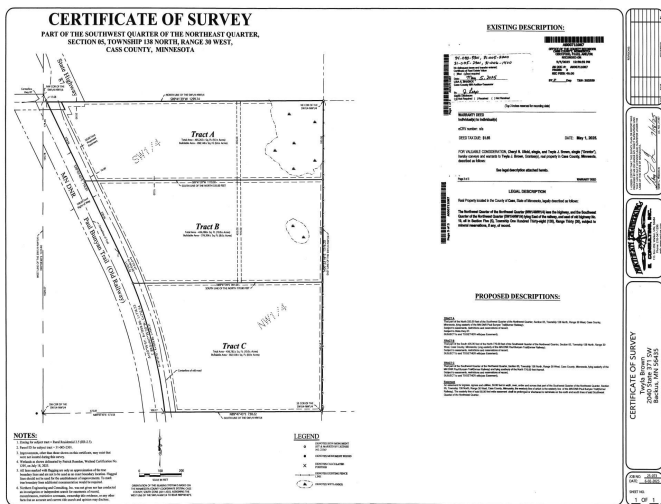
**info@affinityrealestate.com**

MLS



**Affinity Real Estate - 600 Park Avenue South - Park Rapids MN 56470**





website: [www.AffinityRealEstate.com](http://www.AffinityRealEstate.com) | email: [info@affinityrealestate.com](mailto:info@affinityrealestate.com) | office: 218-237-3333 | fax: 218-237-3377

**Affinity**  
REAL ESTATE INC

**\$75,000**  
MLS 6779451 Land  
Track B Hwy 87  
Backus MN 56435