



MLS 6779482 Residential

**\$299,000**

1,920 sq ft  
3 bedrooms  
2 baths

33864 680th Lane  
Hill City MN 55748

Status: Active

#### Description:

Discover peaceful country living in this beautifully updated one-level 3-bedroom, 2-bath home, perfectly set on 11 private acres. With a new roof, new siding, and brand-new front and back decks, this home offers both charm and reliability. Inside, you'll find a warm, functional layout with updated kitchen, flooring, fresh paint, new water heater and new water softener. The gas fireplace provides a comforting feel for the cool fall evenings. The living room, kitchen, and dining room provide a warm feel ideal for quiet evenings or entertaining guests. All three bedrooms, both bathrooms and laundry are conveniently located on the main floor for easy, stair-free living. Step outside to take in the quiet surroundings from your new decks or explore the spacious property. The land includes two shops, ideal for storage, equipment, hobbies, or even a home-based business. With 11 acres to enjoy, there's room for gardening, animals, outdoor recreation, or future expansion. This move-in-ready home is perfect for anyone looking for space, privacy, and a self-sufficient lifestyle—with the added value of shop space and acreage.

#### Additional Details:

Year Built	1975
Lot Acres	11.2
Lot Dimensions	11.2 acres
Garage Stalls	4
School District	2
Taxes	\$1,252
Taxes with Assessments	\$1,252
Tax Year	2025

#### Additional Features:

**Basement:** Crawl Space **Fuel:** Electric, Propane **Garage:** 4 **Heat:** Baseboard, Fireplace(s) **Sewer:** Mound Septic, Septic System Compliant - Yes  
**Water:** Drilled, Private, Sand Point, Well **Air Conditioning:** None

#### Driving Directions:

From 169/200 intersection head east to 340th Ave go north to 680th lane turn right to address.



Listed By:  
eXp Realty

Affinity Real Estate Inc. participates in the Regional Multiple Listing Service of Minnesota, Inc Broker Reciprocity (sm) program, allowing us to display other broker's listings on our website. All properties are subject to prior sale, change or withdrawal.



Call Affinity Real Estate

**218-237-3333**

[info@affinityrealestate.com](mailto:info@affinityrealestate.com)



Affinity Real Estate - 600 Park Avenue South - Park Rapids MN 56470





website: [www.AffinityRealEstate.com](http://www.AffinityRealEstate.com) | email: [info@affinityrealestate.com](mailto:info@affinityrealestate.com) | office: 218-237-3333 | fax: 218-237-3377



**\$299,000**  
 MLS 6779482 Residential  
 33864 680th Lane  
 Hill City MN 55748





website: [www.AffinityRealEstate.com](http://www.AffinityRealEstate.com) | email: [info@affinityrealestate.com](mailto:info@affinityrealestate.com) | office: 218-237-3333 | fax: 218-237-3377



**\$299,000**  
MLS 6779482 Residential  
33864 680th Lane  
Hill City MN 55748



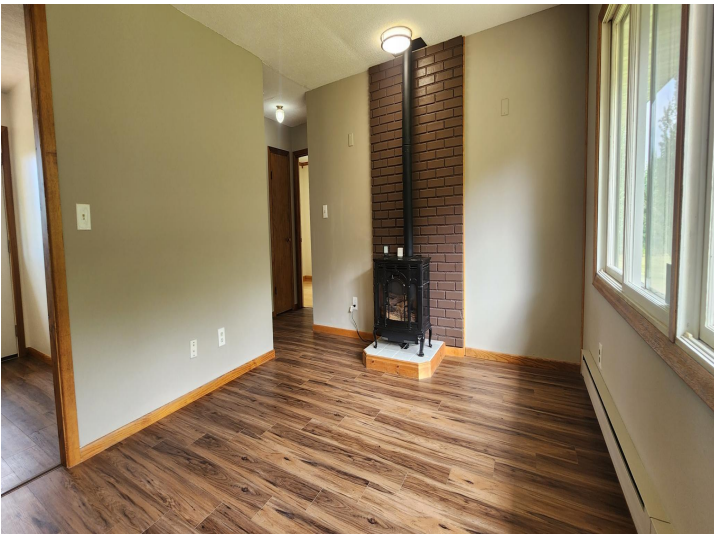


website: [www.AffinityRealEstate.com](http://www.AffinityRealEstate.com) | email: [info@affinityrealestate.com](mailto:info@affinityrealestate.com) | office: 218-237-3333 | fax: 218-237-3377



**\$299,000**  
MLS 6779482 Residential  
33864 680th Lane  
Hill City MN 55748





website: [www.AffinityRealEstate.com](http://www.AffinityRealEstate.com) | email: [info@affinityrealestate.com](mailto:info@affinityrealestate.com) | office: 218-237-3333 | fax: 218-237-3377



**\$299,000**  
MLS 6779482 Residential  
33864 680th Lane  
Hill City MN 55748





website: [www.AffinityRealEstate.com](http://www.AffinityRealEstate.com) | email: [info@affinityrealestate.com](mailto:info@affinityrealestate.com) | office: 218-237-3333 | fax: 218-237-3377



**\$299,000**  
 MLS 6779482 Residential  
 33864 680th Lane  
 Hill City MN 55748





website: [www.AffinityRealEstate.com](http://www.AffinityRealEstate.com) | email: [info@affinityrealestate.com](mailto:info@affinityrealestate.com) | office: 218-237-3333 | fax: 218-237-3377



**\$299,000**  
 MLS 6779482 Residential  
 33864 680th Lane  
 Hill City MN 55748





website: [www.AffinityRealEstate.com](http://www.AffinityRealEstate.com) | email: [info@affinityrealestate.com](mailto:info@affinityrealestate.com) | office: 218-237-3333 | fax: 218-237-3377

**Affinity**  
REAL ESTATE INC

**\$299,000**  
MLS 6779482 Residential  
33864 680th Lane  
Hill City MN 55748