



MLS 6779603 Residential

\$55,000

1,680 sq ft
3 bedrooms
2 baths

3900 Irvine Avenue
Bemidji MN 56601

Status: Active

Description:

If you are looking for a home to add to your land, this is it! Or, maybe, a home that is yours, but on a leased lot for easy land maintenance? This is also it! One-level living awaits a new owner in this 3-bedroom, 2 full bath home featuring vaulted ceilings, a primary suite, newer flooring, open kitchen/dining/living, a storage shed, and more. NO LAND IS INCLUDED IN THE SALE. Buyer MUST move the home OR apply to lease the lot to keep the home in Hillcrest Manor.

Additional Details:

Year Built	1987
School District	31
Taxes	\$406
Taxes with Assessments	\$406
Tax Year	2025

Additional Features:

Basement: None **Fuel:** Natural Gas **Heat:** Forced Air **Sewer:** City Sewer/Connected **Water:** City Water/Connected **Air Conditioning:** None

Driving Directions:

From Walgreens, head north on Irvine Ave through the Anne St roundabout, then stay north, turn right at 3900. Follow to 809 on the left.



Listed By:
Realty Experts, LLC

Affinity Real Estate Inc. participates in the Regional Multiple Listing Service of Minnesota, Inc Broker Reciprocity (sm) program, allowing us to display other broker's listings on our website. All properties are subject to prior sale, change or withdrawal.



Call Affinity Real Estate

218-237-3333

info@affinityrealestate.com



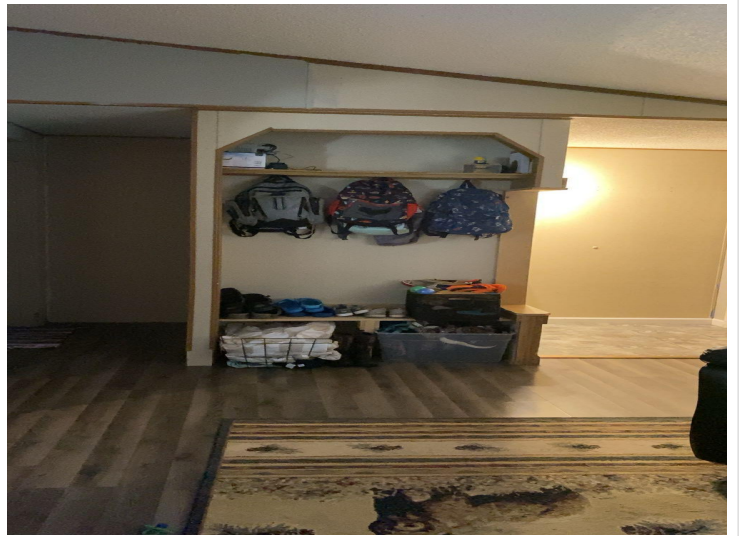
Affinity Real Estate - 600 Park Avenue South - Park Rapids MN 56470



website: www.AffinityRealEstate.com | email: info@affinityrealestate.com | office: 218-237-3333 | fax: 218-237-3377



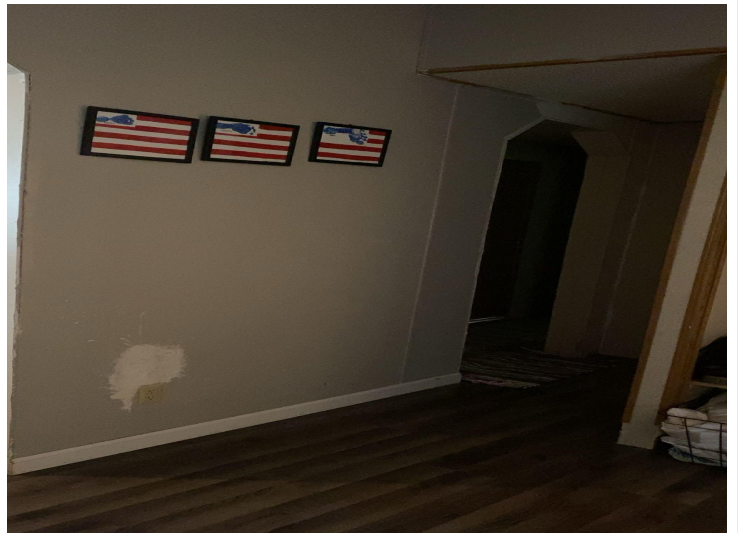
\$55,000
 MLS 6779603 Residential
 3900 Irvine Avenue
 Bemidji MN 56601



website: www.AffinityRealEstate.com | email: info@affinityrealestate.com | office: 218-237-3333 | fax: 218-237-3377

Affinity
REAL ESTATE INC

\$55,000
MLS 6779603 Residential
3900 Irvine Avenue
Bemidji MN 56601



website: www.AffinityRealEstate.com | email: info@affinityrealestate.com | office: 218-237-3333 | fax: 218-237-3377

Affinity
REAL ESTATE INC

\$55,000
MLS 6779603 Residential
3900 Irvine Avenue
Bemidji MN 56601



website: www.AffinityRealEstate.com | email: info@affinityrealestate.com | office: 218-237-3333 | fax: 218-237-3377

Affinity
REAL ESTATE INC

\$55,000
MLS 6779603 Residential
3900 Irvine Avenue
Bemidji MN 56601



website: www.AffinityRealEstate.com | email: info@affinityrealestate.com | office: 218-237-3333 | fax: 218-237-3377



\$55,000
 MLS 6779603 Residential
 3900 Irvine Avenue
 Bemidji MN 56601



website: www.AffinityRealEstate.com | email: info@affinityrealestate.com | office: 218-237-3333 | fax: 218-237-3377



\$55,000
MLS 6779603 Residential
3900 Irvine Avenue
Bemidji MN 56601



website: www.AffinityRealEstate.com | email: info@affinityrealestate.com | office: 218-237-3333 | fax: 218-237-3377



\$55,000
MLS 6779603 Residential
3900 Irvine Avenue
Bemidji MN 56601



website: www.AffinityRealEstate.com | email: info@affinityrealestate.com | office: 218-237-3333 | fax: 218-237-3377

Affinity
REAL ESTATE INC

\$55,000
MLS 6779603 Residential
3900 Irvine Avenue
Bemidji MN 56601



website: www.AffinityRealEstate.com | email: info@affinityrealestate.com | office: 218-237-3333 | fax: 218-237-3377

Affinity
REAL ESTATE INC

\$55,000
MLS 6779603 Residential
3900 Irvine Avenue
Bemidji MN 56601



website: www.AffinityRealEstate.com | email: info@affinityrealestate.com | office: 218-237-3333 | fax: 218-237-3377



\$55,000
MLS 6779603 Residential
3900 Irvine Avenue
Bemidji MN 56601