



MLS 6779730 Land

\$179,000

22 Acres
Raw Land

29505 County Highway 37
Ponsford MN 56575

Status: Pending

Description:

Welcome to this superb 22 acre paradise. You will be able to walk through approximately 5 acres of organic herbs & berries along with wild flowers galore. On each side of the plantings are thousands of Norway pines to the right & scotch pines to the left. Walking through these trees listening to the wind blow through them is mesmerizing. With this size of a tree plantation you will have good timber value as a bonus in the future! Another feature to the property is a 4" deep water well that operates on a solar panel. The property also comes with a 14' by 20' rustic cabin along with a 20' camper. There is a nice shed to store all of your yard tools and mower. This property is a great hunting spot for deer, turkey, and bear. There are oak logs stacked up that produce shitake mushrooms every year! Pick grapes off the vines along with rows of elderberry bushes! This property would be great for honey bees, very pollinator friendly!! The property has Hazel nuts, Rose Hips, New Jersey Tea, Lovage, Lemon Balm, Garlic Chives, Wild Plum Trees, Blackberries, Choke Cherry Bushes, Sage, Thyme, Oregano, Marjoram, Elderberries, Etc.!!

Additional Details:

Lot Acres	22
Lot Dimensions	958,320
School District	23
Taxes	\$350
Taxes with Assessments	\$350
Tax Year	2025

Additional Features:

Driving Directions:

Detroit Lakes, MN - Hwy 34 E. for approximately 15 miles. Turn Right on Cty. Hwy. #37 toward Island- Shell Lake Rd. & follow for 10.3 miles to property on Right.



Listed By:
Spilde Summer Realty

Affinity Real Estate Inc. participates in the Regional Multiple Listing Service of Minnesota, Inc Broker Reciprocity (sm) program, allowing us to display other broker's listings on our website. All properties are subject to prior sale, change or withdrawal.



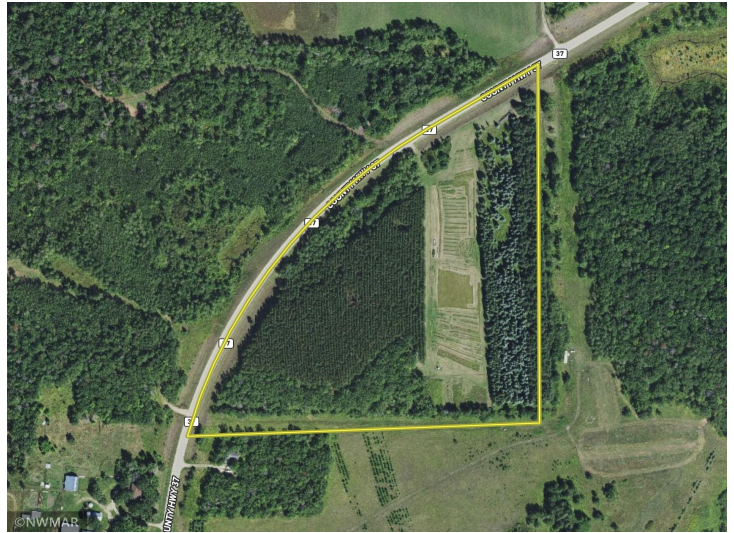
Call Affinity Real Estate

218-237-3333

info@affinityrealestate.com



Affinity Real Estate - 600 Park Avenue South - Park Rapids MN 56470



website: www.AffinityRealEstate.com | email: info@affinityrealestate.com | office: 218-237-3333 | fax: 218-237-3377

Affinity
REAL ESTATE INC

\$179,000
MLS 6779730 Land
29505 County Highway 37
Ponsford MN 56575



website: www.AffinityRealEstate.com | email: info@affinityrealestate.com | office: 218-237-3333 | fax: 218-237-3377



\$179,000
 MLS 6779730 Land
 29505 County Highway 37
 Ponsford MN 56575



website: www.AffinityRealEstate.com | email: info@affinityrealestate.com | office: 218-237-3333 | fax: 218-237-3377



\$179,000
MLS 6779730 Land
29505 County Highway 37
Ponsford MN 56575