



MLS 6779887 Land

**\$300,000**

55.63 Acres  
Plat Designed

TBD Butternut Road  
Brainerd MN 56401

Status: Active

**Description:**

Discover 55.63 acres of prime land offering the perfect balance of privacy and convenience. With 42.6 acres of wooded terrain, this property is a hunter's paradise—complete with established trails and deer stands. Whether you envision it as recreational land, a peaceful retreat, or the future site of your dream home, the options are endless. Build packages are available, but there's no requirement to build—enjoy it simply as a hunting getaway if you wish. Located just minutes from town yet tucked away in a quiet setting, this property is right down the road from a local winery and across the street from 311 acres of public hunting land with scenic walking trails. A rare opportunity to own beautiful acreage in such a sought-after area!

**Additional Details:**

Lot Acres	55.63
Lot Dimensions	633x2198x1319x1311x616x868
School District	181
Taxes	\$234
Taxes with Assessments	\$234
Tax Year	2024

**Additional Features:**

**Driving Directions:**

Take Hwy 210 East to Hwy 25 and continue straight. Take a left onto Butternut Road, property will be on the right.



Listed By:  
Counselor Realty Brainerd Lakes

Affinity Real Estate Inc. participates in the Regional Multiple Listing Service of Minnesota, Inc Broker Reciprocity (sm) program, allowing us to display other broker's listings on our website. All properties are subject to prior sale, change or withdrawal.



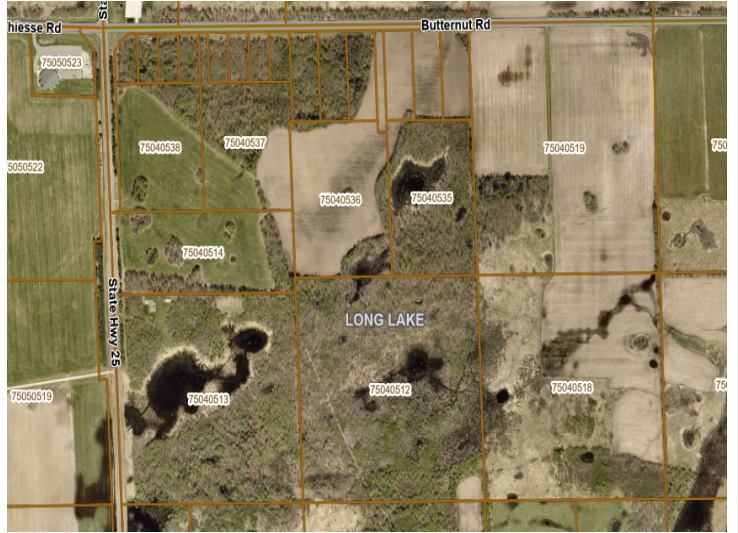
**Call Affinity Real Estate**

**218-237-3333**

**info@affinityrealestate.com**



**Affinity Real Estate - 600 Park Avenue South - Park Rapids MN 56470**



website: [www.AffinityRealEstate.com](http://www.AffinityRealEstate.com) | email: [info@affinityrealestate.com](mailto:info@affinityrealestate.com) | office: 218-237-3333 | fax: 218-237-3377



**\$300,000**

MLS 6779887 Land  
TBD Butternut Road  
Brainerd MN 56401

website: [www.AffinityRealEstate.com](http://www.AffinityRealEstate.com) | email: [info@affinityrealestate.com](mailto:info@affinityrealestate.com) | office: 218-237-3333 | fax:218-237-3377



**\$300,000**

MLS 6779887 Land  
TBD Butternut Road  
Brainerd MN 56401

website: [www.AffinityRealEstate.com](http://www.AffinityRealEstate.com) | email: [info@affinityrealestate.com](mailto:info@affinityrealestate.com) | office: 218-237-3333 | fax:218-237-3377



**\$300,000**

MLS 6779887 Land  
TBD Butternut Road  
Brainerd MN 56401

website: [www.AffinityRealEstate.com](http://www.AffinityRealEstate.com) | email: [info@affinityrealestate.com](mailto:info@affinityrealestate.com) | office: 218-237-3333 | fax:218-237-3377



**\$300,000**

MLS 6779887 Land  
TBD Butternut Road  
Brainerd MN 56401