



MLS 6780060 Lake Home

**\$274,900**

1,024 sq ft  
2 bedrooms  
1 baths

18506 Railroad Grade Trail  
Shevlin MN 56676

Waterfront: Long

Status: Active

#### Description:

Year-round home -and- lakeside cabin located on one of the most unique lakes in the area! Long Lake, located in southern Clearwater County, is well known for its rainbow trout fishing, scuba diving, and tranquil environment without all the boat and jet ski noise due to having a 10-mph speed limit ("no wake lake"). Long Lake is 80' deep, has 24.5' clarity, brilliant, emerald blue/green color. Property consists of a totally remodeled year-round 2bdrm-1 bath, 1024 square foot home with an open LR-DR-Kit area. Upgrades include new windows, flooring, kitchen cabinets/counter-top, all bathroom fixtures, tile work, wiring, plumbing, furnace, and interior walls/trim! In addition, it has a private patio area on the backside of the home, a double garage, a storage shed, a nice yard, located on a dead-end road, so limited traffic, and the property was recently surveyed, and corners are marked! As a huge added bonus, there is a lakeside 468 square foot cabin with a lakeside deck, a stairway going down to the lake with a lakeside storage shed (grandfathered in!), and patio area! Another added perk is that there are 1000s of acres of public land, trails, and other lakes in your backyard because the property is located on the edge of the White Earth State Forest, a/k/a "The Buckboard Hills"! Itasca Park is just down the road, too! Properties like this one don't come along very often! ~~~The roll-in dock will be included with the sale of the home.

#### Additional Details:

Year Built	1972
Lot Acres	0.48
Lot Dimensions	irregular
Garage Stalls	2
School District	162
Taxes	\$1,278
Taxes with Assessments	\$1,278
Tax Year	2025

#### Additional Features:

**Fuel:** Propane **Heat:** Forced Air

#### Driving Directions:

South of Redox, approximately 20.5 miles on #92 (turns into #200) to Railroad Grade Trail, take a right and the property is the first



Listed By:  
Realty Experts, LLC

Affinity Real Estate Inc. participates in the Regional Multiple Listing Service of Minnesota, Inc Broker Reciprocity (sm) program, allowing us to display other broker's listings on our website. All properties are subject to prior sale, change or withdrawal.



Call Affinity Real Estate

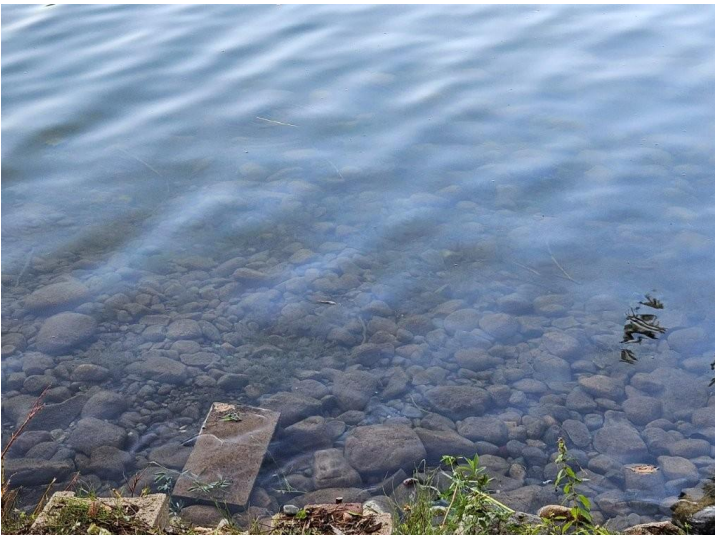
**218-237-3333**

[info@affinityrealestate.com](mailto:info@affinityrealestate.com)



Affinity Real Estate - 600 Park Avenue South - Park Rapids MN 56470





website: [www.AffinityRealEstate.com](http://www.AffinityRealEstate.com) | email: [info@affinityrealestate.com](mailto:info@affinityrealestate.com) | office: 218-237-3333 | fax: 218-237-3377

**Affinity**  
REAL ESTATE INC

**\$274,900**  
MLS 6780060 Lake Home  
18506 Railroad Grade Trail  
Shevlin MN 56676





website: [www.AffinityRealEstate.com](http://www.AffinityRealEstate.com) | email: [info@affinityrealestate.com](mailto:info@affinityrealestate.com) | office: 218-237-3333 | fax: 218-237-3377

**Affinity**  
REAL ESTATE INC

**\$274,900**

MLS 6780060 Lake Home  
18506 Railroad Grade Trail  
Shevlin MN 56676





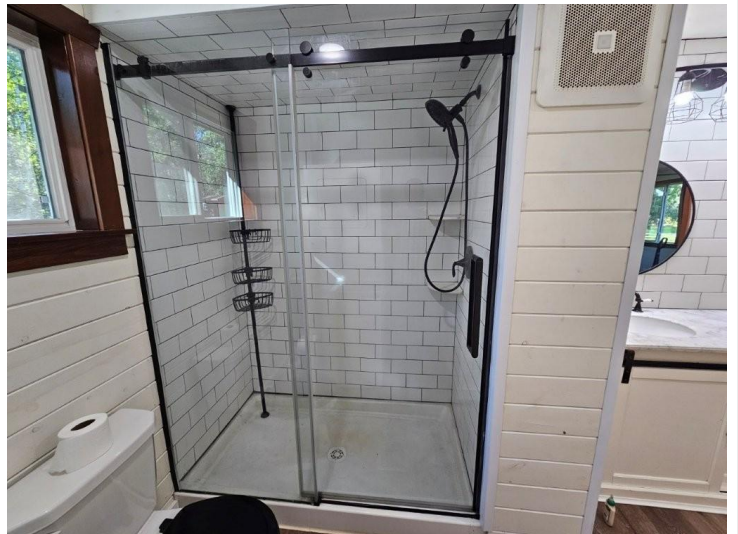
website: [www.AffinityRealEstate.com](http://www.AffinityRealEstate.com) | email: [info@affinityrealestate.com](mailto:info@affinityrealestate.com) | office: 218-237-3333 | fax: 218-237-3377

**Affinity**  
REAL ESTATE INC

**\$274,900**

MLS 6780060 Lake Home  
18506 Railroad Grade Trail  
Shevlin MN 56676





website: [www.AffinityRealEstate.com](http://www.AffinityRealEstate.com) | email: [info@affinityrealestate.com](mailto:info@affinityrealestate.com) | office: 218-237-3333 | fax: 218-237-3377



**\$274,900**  
 MLS 6780060 Lake Home  
 18506 Railroad Grade Trail  
 Shevlin MN 56676





website: [www.AffinityRealEstate.com](http://www.AffinityRealEstate.com) | email: [info@affinityrealestate.com](mailto:info@affinityrealestate.com) | office: 218-237-3333 | fax: 218-237-3377



**\$274,900**

MLS 6780060 Lake Home  
18506 Railroad Grade Trail  
Shevlin MN 56676





website: [www.AffinityRealEstate.com](http://www.AffinityRealEstate.com) | email: [info@affinityrealestate.com](mailto:info@affinityrealestate.com) | office: 218-237-3333 | fax: 218-237-3377



**\$274,900**  
 MLS 6780060 Lake Home  
 18506 Railroad Grade Trail  
 Shevlin MN 56676



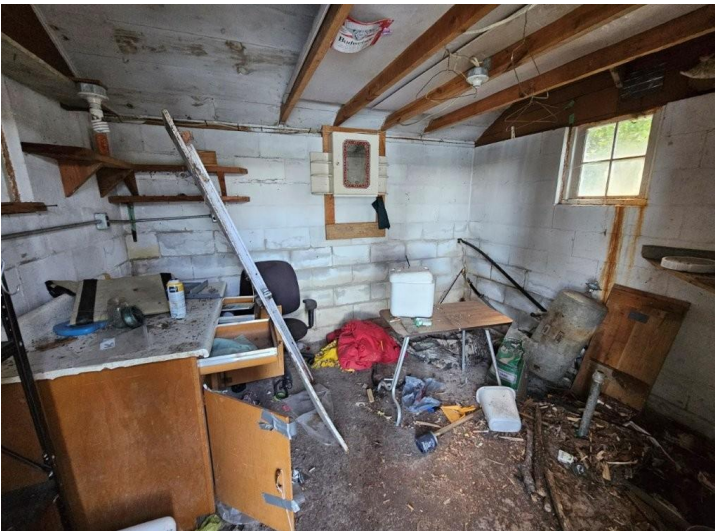


website: [www.AffinityRealEstate.com](http://www.AffinityRealEstate.com) | email: [info@affinityrealestate.com](mailto:info@affinityrealestate.com) | office: 218-237-3333 | fax: 218-237-3377



**\$274,900**  
 MLS 6780060 Lake Home  
 18506 Railroad Grade Trail  
 Shevlin MN 56676



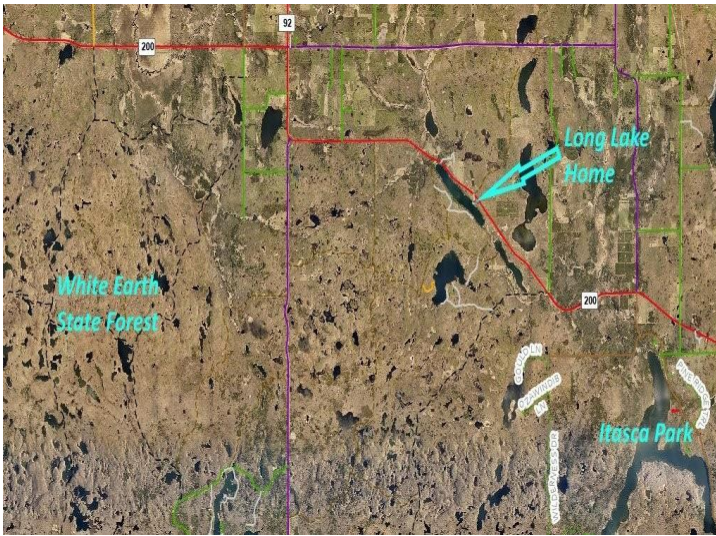


website: [www.AffinityRealEstate.com](http://www.AffinityRealEstate.com) | email: [info@affinityrealestate.com](mailto:info@affinityrealestate.com) | office: 218-237-3333 | fax: 218-237-3377

**Affinity**  
REAL ESTATE INC

**\$274,900**  
MLS 6780060 Lake Home  
18506 Railroad Grade Trail  
Shevlin MN 56676





website: [www.AffinityRealEstate.com](http://www.AffinityRealEstate.com) | email: [info@affinityrealestate.com](mailto:info@affinityrealestate.com) | office: 218-237-3333 | fax: 218-237-3377



**\$274,900**

MLS 6780060 Lake Home  
18506 Railroad Grade Trail  
Shevlin MN 56676



website: [www.AffinityRealEstate.com](http://www.AffinityRealEstate.com) | email: [info@affinityrealestate.com](mailto:info@affinityrealestate.com) | office: 218-237-3333 | fax: 218-237-3377



**\$274,900**

MLS 6780060 Lake Home  
18506 Railroad Grade Trail  
Shevlin MN 56676



website: [www.AffinityRealEstate.com](http://www.AffinityRealEstate.com) | email: [info@affinityrealestate.com](mailto:info@affinityrealestate.com) | office: 218-237-3333 | fax:218-237-3377



**\$274,900**

MLS 6780060 Lake Home  
18506 Railroad Grade Trail  
Shevlin MN 56676



website: [www.AffinityRealEstate.com](http://www.AffinityRealEstate.com) | email: [info@affinityrealestate.com](mailto:info@affinityrealestate.com) | office: 218-237-3333 | fax:218-237-3377



**\$274,900**

MLS 6780060 Lake Home  
18506 Railroad Grade Trail  
Shevlin MN 56676