



MLS 6780250 Residential

\$275,000

1,875 sq ft
3 bedrooms
2 baths

13709 Glenwood Drive
Baxter MN 56425

Status: Active

Description:

Welcome to 13709 Glenwood Drive in Baxter, MN! In the heart of the Brainerd Lakes Area, this 3 bed 2 bath home is ready for its next owners. You'll love the large corner lot that is completely fenced in for all your outdoor activities and entertainment. Located for easy access to employment, shopping, and easy access to all of the golf, lakes, and recreation that the lakes area has to offer. The breezeway connects your attached and insulated garage to the house for the winter months. Large dining area flows into the kitchen for easy meals and a living room with large windows for natural lighting. Fiber optic internet is serving the property as well for easy work from home or streaming options. Don't let this one pass you by!

Additional Details:

Year Built	1970
Lot Acres	0.38
Lot Dimensions	107x175x107x116x63
Garage Stalls	1
School District	181
Taxes	\$2,442
Taxes with Assessments	\$2,442
Tax Year	2024

Additional Features:

Fuel: Natural Gas **Heat:** Forced Air

Driving Directions:

Take MN210 west of 210/371 lights. Turn North on Inglewood. Right on Fairview. Left on Madeline, Immediate right onto Glenwood. Property located on the corner of Glenwood and Madeline.



Listed By:
Edina Realty, Inc.

Affinity Real Estate Inc. participates in the Regional Multiple Listing Service of Minnesota, Inc Broker Reciprocity (sm) program, allowing us to display other broker's listings on our website. All properties are subject to prior sale, change or withdrawal.



Call Affinity Real Estate

218-237-3333

info@affinityrealestate.com



Affinity Real Estate - 600 Park Avenue South - Park Rapids MN 56470



website: www.AffinityRealEstate.com | email: info@affinityrealestate.com | office: 218-237-3333 | fax: 218-237-3377

Affinity
REAL ESTATE INC

\$275,000
MLS 6780250 Residential
13709 Glenwood Drive
Baxter MN 56425



website: www.AffinityRealEstate.com | email: info@affinityrealestate.com | office: 218-237-3333 | fax: 218-237-3377



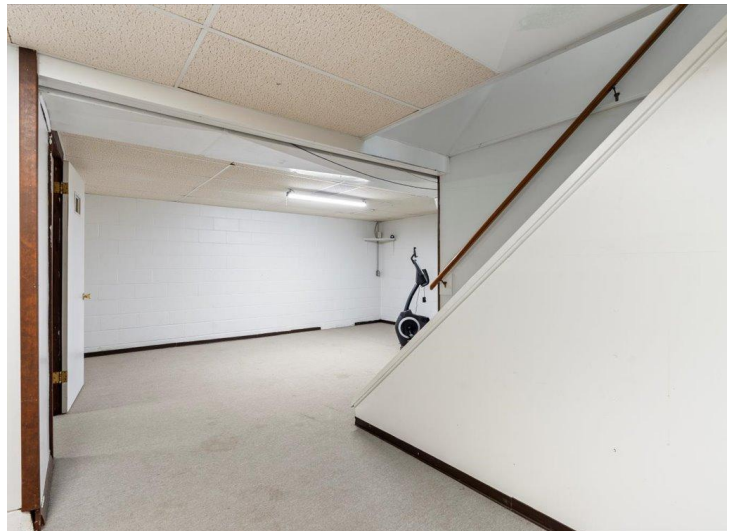
\$275,000
MLS 6780250 Residential
13709 Glenwood Drive
Baxter MN 56425



website: www.AffinityRealEstate.com | email: info@affinityrealestate.com | office: 218-237-3333 | fax: 218-237-3377



\$275,000
 MLS 6780250 Residential
 13709 Glenwood Drive
 Baxter MN 56425



website: www.AffinityRealEstate.com | email: info@affinityrealestate.com | office: 218-237-3333 | fax: 218-237-3377



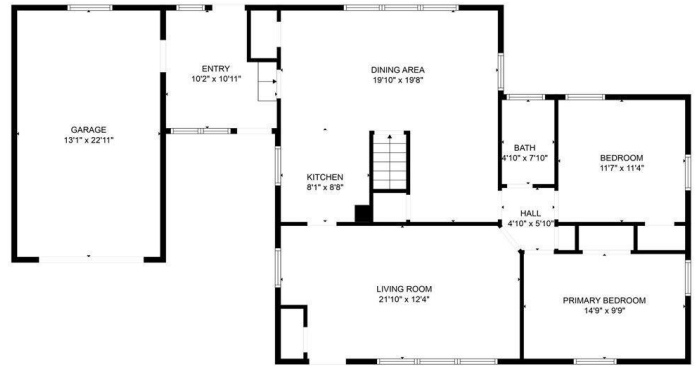
\$275,000
 MLS 6780250 Residential
 13709 Glenwood Drive
 Baxter MN 56425



website: www.AffinityRealEstate.com | email: info@affinityrealestate.com | office: 218-237-3333 | fax: 218-237-3377



\$275,000
 MLS 6780250 Residential
 13709 Glenwood Drive
 Baxter MN 56425



FLOOR PLAN CREATED BY CUBICSCA APP. MEASUREMENTS DEEMED HIGHLY RELIABLE BUT NOT GUARANTEED.

website: www.AffinityRealEstate.com | email: info@affinityrealestate.com | office: 218-237-3333 | fax: 218-237-3377



\$275,000
 MLS 6780250 Residential
 13709 Glenwood Drive
 Baxter MN 56425