



MLS 6780267 Land

\$225,000

2.5 Acres
Finished Lot(s)

TBD State Highway 6
Emily MN 56447

Status: Active

Description:

Located between the charming towns of Crosby and Emily, this 2.5-acre property offers the perfect blend of seclusion and convenience with close access to State Highway 6. Whether you're dreaming of building your forever home, expanding your hobbies, or launching a small business, this property is ready to bring your vision to life.

Nestled among mature trees, the land is partially cleared and ready for your custom home. A spacious 40' x 64' pole building stands on site, fully equipped to support a variety of uses. Built with a durable metal exterior, reinforced concrete floors, in-floor heat, and full spray foam insulation, this building is ideal for storing toys and tools, operating a personal workshop, or even transforming into possible commercial space (with county approval).

Additional features include rough-in plumbing for a bathroom, making future improvements simple and cost-effective.

Whether you're looking for a private retreat, a base for your outdoor adventures, or a space to grow your business, this versatile property is ready to accommodate. Come walk the property and see the potential for yourself!

Additional Details:

Lot Acres	2.5
Lot Dimensions	Approx. 382'x306'x384'x275'
School District	182
Taxes	\$1,308
Taxes with Assessments	\$1,308
Tax Year	2025

Additional Features:

Driving Directions:

From Emily, go South on State Highway 6 for approximately 3 miles. Property will be on your LEFT.

From Crosby, go North on State Highway 6 for approximately 15 miles. Property will be on your RIGHT.



Listed By:
Coldwell Banker Crown Realtors

Affinity Real Estate Inc. participates in the Regional Multiple Listing Service of Minnesota, Inc Broker Reciprocity (sm) program, allowing us to display other broker's listings on our website. All properties are subject to prior sale, change or withdrawal.



Call Affinity Real Estate

218-237-3333

info@affinityrealestate.com



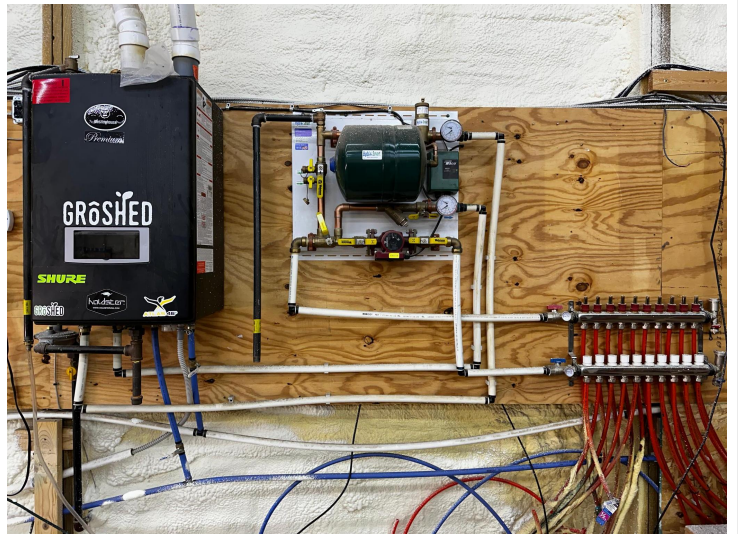
Affinity Real Estate - 600 Park Avenue South - Park Rapids MN 56470



website: www.AffinityRealEstate.com | email: info@affinityrealestate.com | office: 218-237-3333 | fax: 218-237-3377



\$225,000
 MLS 6780267 Land
 TBD State Highway 6
 Emily MN 56447



website: www.AffinityRealEstate.com | email: info@affinityrealestate.com | office: 218-237-3333 | fax: 218-237-3377



\$225,000
 MLS 6780267 Land
 TBD State Highway 6
 Emily MN 56447



website: www.AffinityRealEstate.com | email: info@affinityrealestate.com | office: 218-237-3333 | fax: 218-237-3377



\$225,000
MLS 6780267 Land
TBD State Highway 6
Emily MN 56447



website: www.AffinityRealEstate.com | email: info@affinityrealestate.com | office: 218-237-3333 | fax: 218-237-3377



\$225,000
MLS 6780267 Land
TBD State Highway 6
Emily MN 56447

website: www.AffinityRealEstate.com | email: info@affinityrealestate.com | office: 218-237-3333 | fax:218-237-3377



\$225,000

MLS 6780267 Land
TBD State Highway 6
Emily MN 56447