



MLS 6780279 Residential

**\$399,000**

2,200 sq ft  
2 bedrooms  
2 baths

2641 Maplewood Drive  
Bemidji MN 56601

Status: Pending

#### Description:

Frank Lloyd Wright Inspired 2 Bed, 2 Bath Home with Outdoor Kitchen & Entertaining Spaces

Welcome to this stunning 2-bedroom, 2-bathroom home offering 2,200 sq ft of thoughtfully designed living space. Built with Structural Insulated Panels (SIPs) for energy efficiency and durability, this home blends modern comfort with timeless architecture.

Step inside and enjoy the vaulted ceilings with exposed southern yellow pine beams, creating a warm, open atmosphere perfect for both entertaining and everyday living.

Highlights include:

Spacious 2-stall attached garage with room for vehicles and storage

Natural gas heating for efficiency and comfort

Outdoor kitchen equipped with natural gas, electricity, and water—ideal for gatherings

Smoke-free fire pit for cozy evenings under the stars

Manicured lawn and garden area that enhances curb appeal and provides a serene retreat

This home's Frank Lloyd Wright inspired design emphasizes harmony, light, and connection to the outdoors, making it a truly unique property.

#### Additional Details:

Year Built 2018  
Lot Acres 1.48  
Lot Dimensions 470x220

Garage Stalls 2

Listed By:  
Andy Williams Realty Group, LLC

Taxes \$3,964  
Affinity Real Estate Inc. participates in the Regional Multiple Listing Service of Minnesota, Inc Broker Reciprocity (sm) program, allowing Tax Year 2025 to display other broker's listings on our website. All properties are subject to prior sale, change or withdrawal.

#### Additional Features:

Basement: None Fuel: Natural Gas Garage: 2 Heat: Boiler, Forced Air, Hot Water, Radiant Floor, Radiant Sewer: Private Sewer, Septic System  
Compliant - Yes, Tank with Drainage Field Water: Submersible - 4 Inch, Drilled, Private, Well Air Conditioning: Central Air

#### Driving Directions:



Call Affinity Real Estate

**218-237-3333**

[info@affinityrealestate.com](mailto:info@affinityrealestate.com)



Affinity Real Estate - 600 Park Avenue South - Park Rapids MN 56470





website: [www.AffinityRealEstate.com](http://www.AffinityRealEstate.com) | email: [info@affinityrealestate.com](mailto:info@affinityrealestate.com) | office: 218-237-3333 | fax: 218-237-3377

**Affinity**  
REAL ESTATE INC

**\$399,000**  
MLS 6780279 Residential  
2641 Maplewood Drive  
Bemidji MN 56601





website: [www.AffinityRealEstate.com](http://www.AffinityRealEstate.com) | email: [info@affinityrealestate.com](mailto:info@affinityrealestate.com) | office: 218-237-3333 | fax: 218-237-3377



**\$399,000**  
 MLS 6780279 Residential  
 2641 Maplewood Drive  
 Bemidji MN 56601





website: [www.AffinityRealEstate.com](http://www.AffinityRealEstate.com) | email: [info@affinityrealestate.com](mailto:info@affinityrealestate.com) | office: 218-237-3333 | fax: 218-237-3377

**Affinity**  
REAL ESTATE INC

**\$399,000**  
MLS 6780279 Residential  
2641 Maplewood Drive  
Bemidji MN 56601





website: [www.AffinityRealEstate.com](http://www.AffinityRealEstate.com) | email: [info@affinityrealestate.com](mailto:info@affinityrealestate.com) | office: 218-237-3333 | fax: 218-237-3377

**Affinity**  
REAL ESTATE INC

**\$399,000**  
MLS 6780279 Residential  
2641 Maplewood Drive  
Bemidji MN 56601





website: [www.AffinityRealEstate.com](http://www.AffinityRealEstate.com) | email: [info@affinityrealestate.com](mailto:info@affinityrealestate.com) | office: 218-237-3333 | fax: 218-237-3377

**Affinity**  
REAL ESTATE INC

**\$399,000**  
MLS 6780279 Residential  
2641 Maplewood Drive  
Bemidji MN 56601





website: [www.AffinityRealEstate.com](http://www.AffinityRealEstate.com) | email: [info@affinityrealestate.com](mailto:info@affinityrealestate.com) | office: 218-237-3333 | fax: 218-237-3377

**Affinity**  
REAL ESTATE INC

**\$399,000**  
MLS 6780279 Residential  
2641 Maplewood Drive  
Bemidji MN 56601



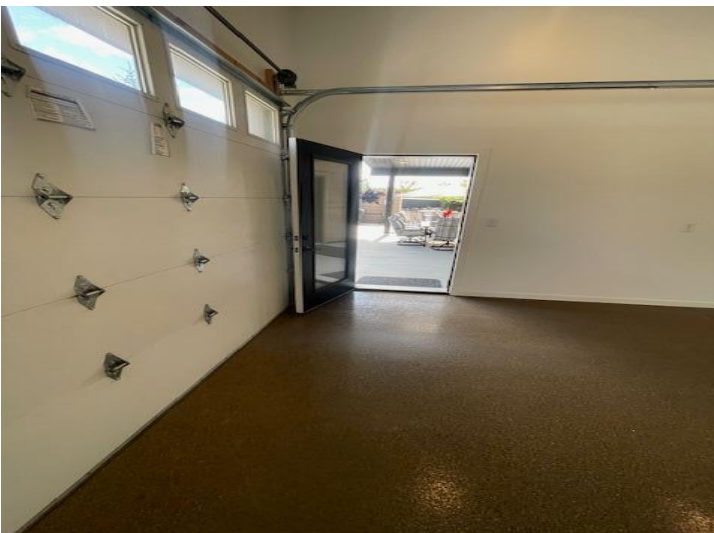


website: [www.AffinityRealEstate.com](http://www.AffinityRealEstate.com) | email: [info@affinityrealestate.com](mailto:info@affinityrealestate.com) | office: 218-237-3333 | fax: 218-237-3377

**Affinity**  
REAL ESTATE INC

**\$399,000**  
MLS 6780279 Residential  
2641 Maplewood Drive  
Bemidji MN 56601





website: [www.AffinityRealEstate.com](http://www.AffinityRealEstate.com) | email: [info@affinityrealestate.com](mailto:info@affinityrealestate.com) | office: 218-237-3333 | fax: 218-237-3377



**\$399,000**  
 MLS 6780279 Residential  
 2641 Maplewood Drive  
 Bemidji MN 56601





website: [www.AffinityRealEstate.com](http://www.AffinityRealEstate.com) | email: [info@affinityrealestate.com](mailto:info@affinityrealestate.com) | office: 218-237-3333 | fax: 218-237-3377



**\$399,000**  
 MLS 6780279 Residential  
 2641 Maplewood Drive  
 Bemidji MN 56601