



MLS 6780329 Residential

**\$199,000**

1,664 sq ft  
3 bedrooms  
2 baths

214 Cherry Avenue  
Fergus Falls MN 56537

Status: Active

**Description:**

Discover this 3-bedroom, 2-bath home in the heart of Fergus Falls! Perfectly located on a quiet street near the elementary school, the high school, and the brand new aquatic center, this property offers both convenience and comfort. The home features a walkout basement for added living space and functionality, along with important updates including a new roof, siding, and windows. Enjoy year round comfort with central air, natural gas forced air furnace that includes and backup plenum heater. A great opportunity to own a move-in ready home close to everything Fergus Falls has to offer.

**Additional Details:**

Year Built	1998
Lot Acres	0.17
Lot Dimensions	63 x 150
School District	544
Taxes	\$1,672
Taxes with Assessments	\$1,672
Tax Year	2025

**Additional Features:**

**Basement:** Finished, Full, Walkout, Wood **Fuel:** Electric, Natural Gas **Heat:** Forced Air **Sewer:** City Sewer/Connected **Water:** City Water/Connected **Air Conditioning:** Central Air

**Driving Directions:**

214 E Cherry Ave about 1.5 blocks north of Cleveland Elementary School.



Listed By:  
Weichert, Realtors - Paulson Land Co

Affinity Real Estate Inc. participates in the Regional Multiple Listing Service of Minnesota, Inc Broker Reciprocity (sm) program, allowing us to display other broker's listings on our website. All properties are subject to prior sale, change or withdrawal.



**Call Affinity Real Estate**

**218-237-3333**

**info@affinityrealestate.com**



**Affinity Real Estate - 600 Park Avenue South - Park Rapids MN 56470**





website: [www.AffinityRealEstate.com](http://www.AffinityRealEstate.com) | email: [info@affinityrealestate.com](mailto:info@affinityrealestate.com) | office: 218-237-3333 | fax: 218-237-3377

**Affinity**  
REAL ESTATE INC

**\$199,000**  
MLS 6780329 Residential  
214 Cherry Avenue  
Fergus Falls MN 56537





website: [www.AffinityRealEstate.com](http://www.AffinityRealEstate.com) | email: [info@affinityrealestate.com](mailto:info@affinityrealestate.com) | office: 218-237-3333 | fax: 218-237-3377



**\$199,000**  
MLS 6780329 Residential  
214 Cherry Avenue  
Fergus Falls MN 56537



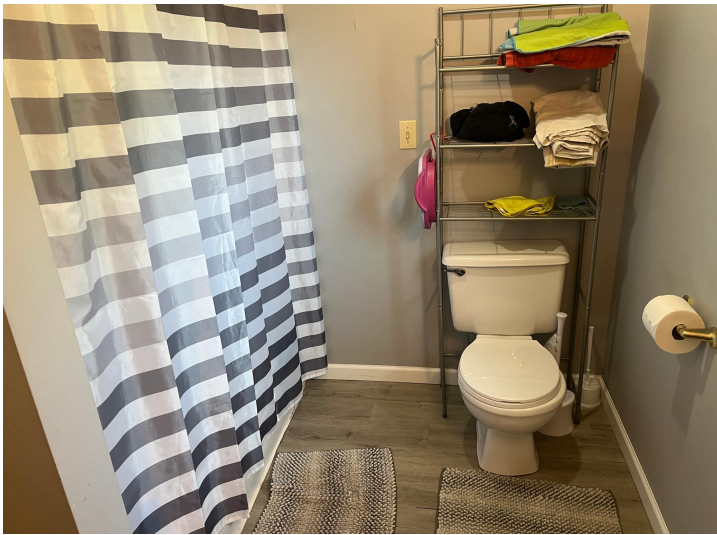


website: [www.AffinityRealEstate.com](http://www.AffinityRealEstate.com) | email: [info@affinityrealestate.com](mailto:info@affinityrealestate.com) | office: 218-237-3333 | fax: 218-237-3377

**Affinity**  
REAL ESTATE INC

**\$199,000**  
MLS 6780329 Residential  
214 Cherry Avenue  
Fergus Falls MN 56537





website: [www.AffinityRealEstate.com](http://www.AffinityRealEstate.com) | email: [info@affinityrealestate.com](mailto:info@affinityrealestate.com) | office: 218-237-3333 | fax: 218-237-3377



**\$199,000**  
 MLS 6780329 Residential  
 214 Cherry Avenue  
 Fergus Falls MN 56537





website: [www.AffinityRealEstate.com](http://www.AffinityRealEstate.com) | email: [info@affinityrealestate.com](mailto:info@affinityrealestate.com) | office: 218-237-3333 | fax: 218-237-3377

**Affinity**  
REAL ESTATE INC

**\$199,000**  
MLS 6780329 Residential  
214 Cherry Avenue  
Fergus Falls MN 56537





website: [www.AffinityRealEstate.com](http://www.AffinityRealEstate.com) | email: [info@affinityrealestate.com](mailto:info@affinityrealestate.com) | office: 218-237-3333 | fax: 218-237-3377



**\$199,000**  
MLS 6780329 Residential  
214 Cherry Avenue  
Fergus Falls MN 56537