



MLS 6780410 Residential

\$429,900

3,142 sq ft
3 bedrooms
3 baths

32240 County 31
Laporte MN 56461

Status: Active

Description:


Tucked away on 10 private, wooded acres just 8 miles from Walker and 5 miles from Laporte, this beautifully maintained 3-bedroom, 3-bath Anderson Log Home offers the perfect blend of space, comfort, and serene Northwoods charm. From the moment you arrive, a cozy covered front porch welcomes you, while the backyard deck features both an open area and a covered, screened-in porch—ideal for enjoying the peaceful sights and sounds of nature in any season. Inside, you'll find a spacious, light-filled interior with skylights and a stunning stone fireplace, creating a warm, inviting atmosphere. The generous kitchen offers ample storage and is perfect for cooking and entertaining. The main level features two bedrooms, including a primary suite with a full bath, large closet, and washer/dryer hookups for added convenience. A charming sunken sitting room provides beautiful views of the surrounding woods, while the lower level includes a family room, an additional bedroom, and a $\frac{3}{4}$ bath—great for guests or multi-generational living. Additional features include a heated workshop, attached 2-stall garage, storage shed, steel carport, and a turn-around driveway. Outdoor enthusiasts will love the direct access to two major trail systems for biking, hiking, ATV riding, and snowmobiling—making this an ideal year-round home or weekend escape. Whether you're searching for a peaceful full-time residence or a Northwoods getaway with modern comforts, this property offers privacy, nature, and convenience all in one beautiful package. (New septic system being installed at Sellers expense prior to close- See supplements for design)

Additional Details:

Year Built	1987
Lot Acres	10.8
Lot Dimensions	540x739x694x464x156x275
Garage Stalls	2
School District	113
Taxes	\$1,644
Taxes with Assessments	\$1,644
Tax Year	2025

Additional Features:

Fuel: Propane **Heat:** Forced Air

 Listed By:
Kurilla Real Estate LTD
From Walker, take a slight left turn onto MN-200, continue for approx 32240 CR-31, Laporte MN.
Affinity Real Estate Inc. participates in the Regional Multiple Listing Service of Minnesota, Inc Broker Reciprocity (sm) program, allowing us to display other broker's listings on our website. All properties are subject to prior sale, change or withdrawal.



Call Affinity Real Estate

218-237-3333

info@affinityrealestate.com



Affinity Real Estate - 600 Park Avenue South - Park Rapids MN 56470



website: www.AffinityRealEstate.com | email: info@affinityrealestate.com | office: 218-237-3333 | fax: 218-237-3377



\$429,900
 MLS 6780410 Residential
 32240 County 31
 Laporte MN 56461



website: www.AffinityRealEstate.com | email: info@affinityrealestate.com | office: 218-237-3333 | fax: 218-237-3377

Affinity
REAL ESTATE INC

\$429,900
MLS 6780410 Residential
32240 County 31
Laporte MN 56461



website: www.AffinityRealEstate.com | email: info@affinityrealestate.com | office: 218-237-3333 | fax: 218-237-3377

Affinity
REAL ESTATE INC

\$429,900
MLS 6780410 Residential
32240 County 31
Laporte MN 56461



website: www.AffinityRealEstate.com | email: info@affinityrealestate.com | office: 218-237-3333 | fax: 218-237-3377



\$429,900
 MLS 6780410 Residential
 32240 County 31
 Laporte MN 56461



website: www.AffinityRealEstate.com | email: info@affinityrealestate.com | office: 218-237-3333 | fax: 218-237-3377

Affinity
REAL ESTATE INC

\$429,900
MLS 6780410 Residential
32240 County 31
Laporte MN 56461



website: www.AffinityRealEstate.com | email: info@affinityrealestate.com | office: 218-237-3333 | fax: 218-237-3377

Affinity
REAL ESTATE INC

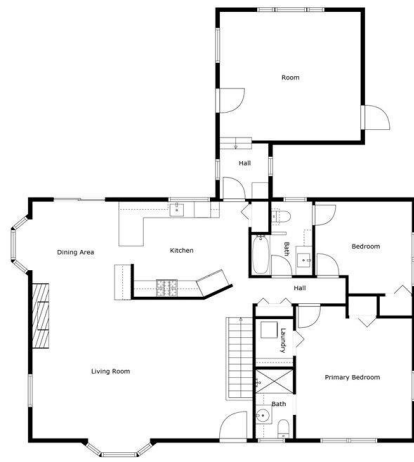
\$429,900
MLS 6780410 Residential
32240 County 31
Laporte MN 56461



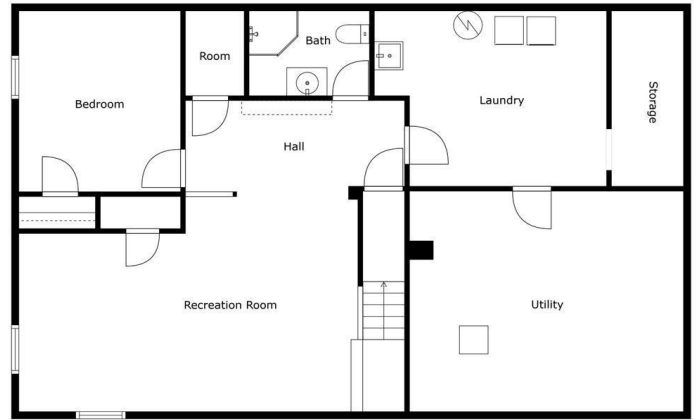
website: www.AffinityRealEstate.com | email: info@affinityrealestate.com | office: 218-237-3333 | fax: 218-237-3377



\$429,900
 MLS 6780410 Residential
 32240 County 31
 Laporte MN 56461



Size And Dimensions Are Approximate. Actual Measurements May Vary



Size And Dimensions Are Approximate. Actual Measurements May Vary



Floor 1

Floor 2

Size And Dimensions Are Approximate. Actual Measurements May Vary

website: www.AffinityRealEstate.com | email: info@affinityrealestate.com | office: 218-237-3333 | fax: 218-237-3377



\$429,900

MLS 6780410 Residential
32240 County 31
Laporte MN 56461