



MLS 6780788 Lake Home

\$796,600

2,016 sq ft
4 bedrooms
3 baths

38700 Osprey Trail
Laporte MN 56461

Waterfront: Garfield

Status: Active

Description:

PREPPERS PARADISE! This is a property you will not want to miss out on, as it sits on 21.12 acres with 302' of Garfield Lake shoreline. There is lots of potential; as you pull into the driveway, which is on a dead end private road, you will first see the home with attached wood shed, around the corner you will find the old greenhouse, to to an amazing newer greenhouse, walk around that to see may other out buildings all in matching green metal, a storage shed, a garden shed which has a small toilet, stove, sink and a water heater and located right next to that was what once was a beautiful orchard as you continue to walk, you will now be looking at the pond which is right next to the 302' of lakeshore. But wait, we can't forget the house! The home is handicap accessible with an elevator and wheelchair lift in the garage. If you want to live off-grid, this is the place to live (inverter, generator for home, fuel tanks, etc). You name it, this property most likely has it!

Additional Details:

Year Built	1996
Lot Acres	21.12
Lot Dimensions	irregular
Garage Stalls	3
School District	306
Taxes	\$3,534
Taxes with Assessments	\$3,534
Tax Year	2025

Additional Features:

Basement: Block, Sump Pump, Tile Shower, Unfinished, Walkout **Fuel:** Propane **Garage:** 3 **Heat:** Forced Air **Sewer:** Mound Septic, Private Sewer **Water:** Well **Air Conditioning:** Central Air

Driving Directions:

In Laporte, head southeast on #200 to a left on #45, left on 393rd St, left on Old Sunset Dr, right on Osprey Trail. Home is at the end.



Listed By:
Realty Experts, LLC

Affinity Real Estate Inc. participates in the Regional Multiple Listing Service of Minnesota, Inc Broker Reciprocity (sm) program, allowing us to display other broker's listings on our website. All properties are subject to prior sale, change or withdrawal.



Call Affinity Real Estate

218-237-3333

info@affinityrealestate.com



Affinity Real Estate - 600 Park Avenue South - Park Rapids MN 56470



website: www.AffinityRealEstate.com | email: info@affinityrealestate.com | office: 218-237-3333 | fax: 218-237-3377



\$796,600
 MLS 6780788 Lake Home
 38700 Osprey Trail
 Laporte MN 56461



website: www.AffinityRealEstate.com | email: info@affinityrealestate.com | office: 218-237-3333 | fax: 218-237-3377

Affinity
REAL ESTATE INC

\$796,600
MLS 6780788 Lake Home
38700 Osprey Trail
Laporte MN 56461



website: www.AffinityRealEstate.com | email: info@affinityrealestate.com | office: 218-237-3333 | fax: 218-237-3377

Affinity
REAL ESTATE INC

\$796,600
MLS 6780788 Lake Home
38700 Osprey Trail
Laporte MN 56461



website: www.AffinityRealEstate.com | email: info@affinityrealestate.com | office: 218-237-3333 | fax: 218-237-3377



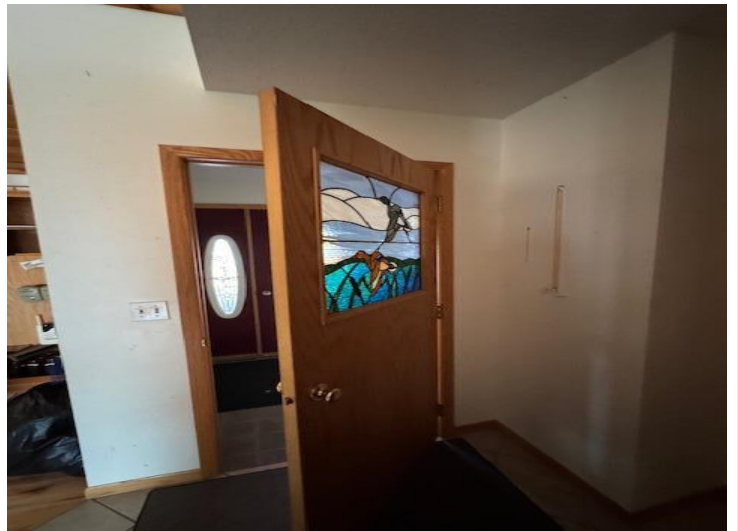
\$796,600
 MLS 6780788 Lake Home
 38700 Osprey Trail
 Laporte MN 56461



website: www.AffinityRealEstate.com | email: info@affinityrealestate.com | office: 218-237-3333 | fax: 218-237-3377

Affinity
REAL ESTATE INC

\$796,600
MLS 6780788 Lake Home
38700 Osprey Trail
Laporte MN 56461



website: www.AffinityRealEstate.com | email: info@affinityrealestate.com | office: 218-237-3333 | fax: 218-237-3377

Affinity
REAL ESTATE INC

\$796,600
MLS 6780788 Lake Home
38700 Osprey Trail
Laporte MN 56461



website: www.AffinityRealEstate.com | email: info@affinityrealestate.com | office: 218-237-3333 | fax: 218-237-3377



\$796,600
MLS 6780788 Lake Home
38700 Osprey Trail
Laporte MN 56461