



MLS 6781177 Lake Home

\$540,000

2,580 sq ft
3 bedrooms
2 baths

14338 115th Avenue
Lake Park MN 56554

Waterfront: Turtle

Status: Active

Description:

TURTLE LAKE: With 180 feet excellent beach, and nearly an acre of space, this 3 bed, 2 bath, Turtle Lake home covers all the bases: space, privacy, room to entertain, room to expand, it's all here. Located on the east shore, this home offers phenomenal sunsets and the best view of the lake. The main floor hosts the kitchen, dining and living room plus two bedrooms and a full bath. Patio doors from the kitchen and primary bedroom provide access to the upper level deck. The lower level includes a second kitchen, perfect for entertaining, third bedroom, 3/4 bath, a flex room that could become a 4th bedroom by adding an egress window, a four-season sunroom plus laundry room. The 20 X 24 foot workshop on the main level could be converted to an additional family room, party room or overflow guest area. Your options are limited only by your imagination. Plus: all the windows and patio doors have been updated with vinyl windows. A two car garage and garden shed provide space for all the toys.

Additional Details:

Year Built	1959
Lot Acres	0.8
Lot Dimensions	Irregular
Garage Stalls	2
School District	2889
Taxes	\$3,508
Taxes with Assessments	\$3,508
Tax Year	2025

Additional Features:

Basement: Block, Walkout **Fuel:** Electric, Propane **Garage:** 2 **Heat:** Baseboard, Boiler, Dual, Hot Water **Sewer:** Private Sewer, Tank with Drainage Field **Water:** Drilled, Private, Well **Air Conditioning:** Wall Unit(s)

Driving Directions:

From Highway 10: South on Becker #1 to 147th St. West on 147th St to 115th Ave. S on 115th Ave to property.



Listed By:
Cormorant Realty

Affinity Real Estate Inc. participates in the Regional Multiple Listing Service of Minnesota, Inc Broker Reciprocity (sm) program, allowing us to display other broker's listings on our website. All properties are subject to prior sale, change or withdrawal.



Call Affinity Real Estate

218-237-3333

info@affinityrealestate.com



Affinity Real Estate - 600 Park Avenue South - Park Rapids MN 56470



website: www.AffinityRealEstate.com | email: info@affinityrealestate.com | office: 218-237-3333 | fax:218-237-3377

Affinity
REAL ESTATE INC

\$540,000
MLS 6781177 Lake Home
14338 115th Avenue
Lake Park MN 56554



website: www.AffinityRealEstate.com | email: info@affinityrealestate.com | office: 218-237-3333 | fax:218-237-3377



\$540,000
MLS 6781177 Lake Home
14338 115th Avenue
Lake Park MN 56554



website: www.AffinityRealEstate.com | email: info@affinityrealestate.com | office: 218-237-3333 | fax:218-237-3377



\$540,000
MLS 6781177 Lake Home
14338 115th Avenue
Lake Park MN 56554



website: www.AffinityRealEstate.com | email: info@affinityrealestate.com | office: 218-237-3333 | fax: 218-237-3377

Affinity
REAL ESTATE INC

\$540,000
MLS 6781177 Lake Home
14338 115th Avenue
Lake Park MN 56554



website: www.AffinityRealEstate.com | email: info@affinityrealestate.com | office: 218-237-3333 | fax:218-237-3377



\$540,000
MLS 6781177 Lake Home
14338 115th Avenue
Lake Park MN 56554



website: www.AffinityRealEstate.com | email: info@affinityrealestate.com | office: 218-237-3333 | fax:218-237-3377



\$540,000
MLS 6781177 Lake Home
14338 115th Avenue
Lake Park MN 56554



website: www.AffinityRealEstate.com | email: info@affinityrealestate.com | office: 218-237-3333 | fax:218-237-3377

Affinity
REAL ESTATE INC

\$540,000
MLS 6781177 Lake Home
14338 115th Avenue
Lake Park MN 56554



website: www.AffinityRealEstate.com | email: info@affinityrealestate.com | office: 218-237-3333 | fax:218-237-3377



\$540,000
MLS 6781177 Lake Home
14338 115th Avenue
Lake Park MN 56554



website: www.AffinityRealEstate.com | email: info@affinityrealestate.com | office: 218-237-3333 | fax: 218-237-3377



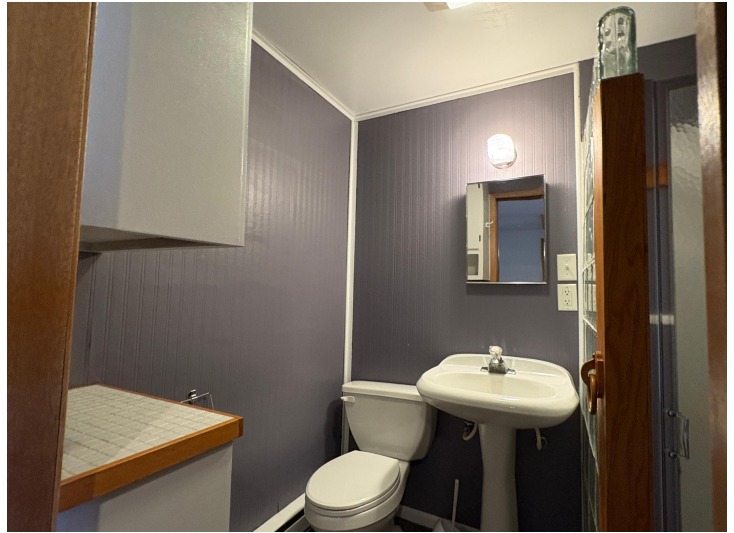
\$540,000
MLS 6781177 Lake Home
14338 115th Avenue
Lake Park MN 56554



website: www.AffinityRealEstate.com | email: info@affinityrealestate.com | office: 218-237-3333 | fax:218-237-3377

Affinity
REAL ESTATE INC

\$540,000
MLS 6781177 Lake Home
14338 115th Avenue
Lake Park MN 56554



website: www.AffinityRealEstate.com | email: info@affinityrealestate.com | office: 218-237-3333 | fax:218-237-3377



\$540,000
MLS 6781177 Lake Home
14338 115th Avenue
Lake Park MN 56554



website: www.AffinityRealEstate.com | email: info@affinityrealestate.com | office: 218-237-3333 | fax:218-237-3377



\$540,000
MLS 6781177 Lake Home
14338 115th Avenue
Lake Park MN 56554



website: www.AffinityRealEstate.com | email: info@affinityrealestate.com | office: 218-237-3333 | fax: 218-237-3377



\$540,000
MLS 6781177 Lake Home
14338 115th Avenue
Lake Park MN 56554