



MLS 6781532 Land

\$1,000,000

3.86 Acres
Subdivided

TBD Hannah Avenue
Bemidji MN 56601

Status: Active

Description:

Nearly four acres just off Paul Bunyan Drive NW, blocks from Sanford Medical campus, right behind Walmart. Fantastic location, good traffic counts (about 4k on each leg), good visibility from highway 71.

NOTE: Deed Restriction: No multi-family housing.

Additional Details:

Lot Acres	3.86
Lot Dimensions	410x409
School District	31
Taxes	\$11,428
Taxes with Assessments	\$11,428
Tax Year	2025

Additional Features:

Driving Directions:

Corner of Hannah Avenue NW and 30th Street NW. Behind Walmart.



Listed By:
Lake-N-Woods Realty

Affinity Real Estate Inc. participates in the Regional Multiple Listing Service of Minnesota, Inc Broker Reciprocity (sm) program, allowing us to display other broker's listings on our website. All properties are subject to prior sale, change or withdrawal.



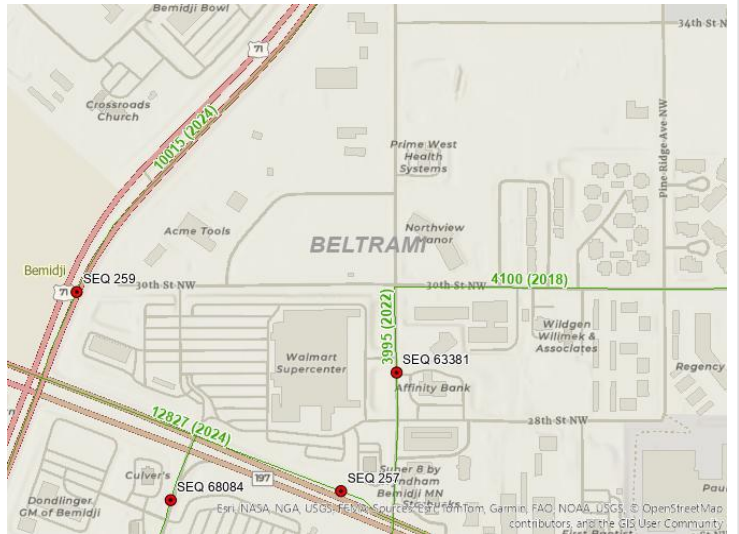
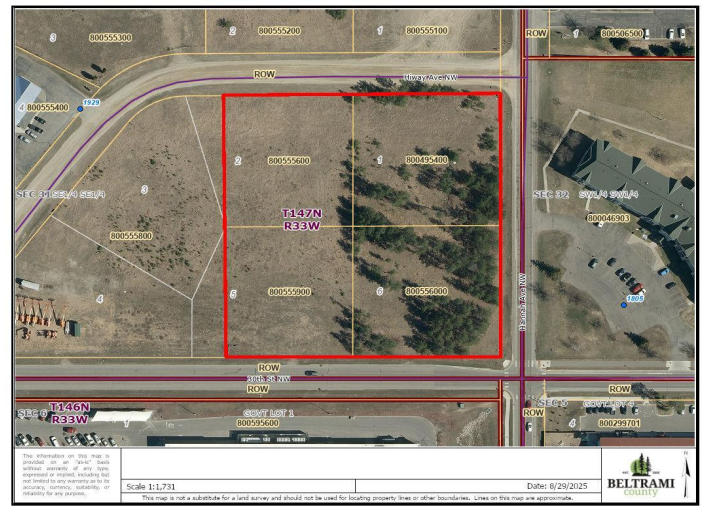
Call Affinity Real Estate

218-237-3333

info@affinityrealestate.com



Affinity Real Estate - 600 Park Avenue South - Park Rapids MN 56470



website: www.AffinityRealEstate.com | email: info@affinityrealestate.com | office: 218-237-3333 | fax: 218-237-3377



\$1,000,000
MLS 6781532 Land
TBD Hannah Avenue
Bemidji MN 56601

website: www.AffinityRealEstate.com | email: info@affinityrealestate.com | office: 218-237-3333 | fax:218-237-3377



\$1,000,000

MLS 6781532 Land
TBD Hannah Avenue
Bemidji MN 56601