



MLS 6781780 Residential

**\$499,900**

2,600 sq ft  
5 bedrooms  
3 baths

12483 135th Avenue  
Menahga MN 56464

Status: Active

**Description:**

Beautiful home, dream shop and 11.53 exceptional acres. This offering is loaded with value and is move-in ready! The home features over 2,600 finished square feet with 5 bedrooms, 3 baths hardwood flooring, quartz counters, vaulted ceilings, in-floor + gas forced air heat and fiber optic internet. A large west facing deck and circular concrete patio area provide the perfect opportunity to soak in this amazing setting while enjoying nature up close. A 36x58 shop with RV plugins, half bath, steel lined interior walls, in-floor + forced air heat have all of your storage and hobby needs met. The home and shop have their own independent septic systems, both of which are in compliance. A huge concrete pad conveniently connects the two. Great landscaping, privacy and less than 10 minutes from Park Rapids. For the deer hunter, this property is located in high density Zone 241. Menahga address, Park Rapids school district. Awesome property!

**Additional Details:**

Year Built	2003
Lot Acres	11.53
Lot Dimensions	380 x 1320
Garage Stalls	2
School District	309
Taxes	\$2,187
Taxes with Assessments	\$2,408
Tax Year	2025

**Additional Features:**

**Fuel:** Electric, Propane **Heat:** Forced Air, Radiant Floor

**Driving Directions:**

From Hwy 71 @ Hwy 34: Go South on 71 (6.5) miles to a right on 120th St. Go 1/8th of a mile to a right on 135th Ave. Proceed 1/2 a mile to property on left.



Listed By:  
Affinity Real Estate Inc.

Affinity Real Estate Inc. participates in the Regional Multiple Listing Service of Minnesota, Inc Broker Reciprocity (sm) program, allowing us to display other broker's listings on our website. All properties are subject to prior sale, change or withdrawal.



**Call Affinity Real Estate**

**218-237-3333**

**info@affinityrealestate.com**



**Affinity Real Estate - 600 Park Avenue South - Park Rapids MN 56470**





website: [www.AffinityRealEstate.com](http://www.AffinityRealEstate.com) | email: [info@affinityrealestate.com](mailto:info@affinityrealestate.com) | office: 218-237-3333 | fax: 218-237-3377



**\$499,900**  
 MLS 6781780 Residential  
 12483 135th Avenue  
 Menahga MN 56464





website: [www.AffinityRealEstate.com](http://www.AffinityRealEstate.com) | email: [info@affinityrealestate.com](mailto:info@affinityrealestate.com) | office: 218-237-3333 | fax: 218-237-3377



**\$499,900**  
 MLS 6781780 Residential  
 12483 135th Avenue  
 Menahga MN 56464





website: [www.AffinityRealEstate.com](http://www.AffinityRealEstate.com) | email: [info@affinityrealestate.com](mailto:info@affinityrealestate.com) | office: 218-237-3333 | fax: 218-237-3377



**\$499,900**  
 MLS 6781780 Residential  
 12483 135th Avenue  
 Menahga MN 56464





website: [www.AffinityRealEstate.com](http://www.AffinityRealEstate.com) | email: [info@affinityrealestate.com](mailto:info@affinityrealestate.com) | office: 218-237-3333 | fax: 218-237-3377



**\$499,900**  
MLS 6781780 Residential  
12483 135th Avenue  
Menahga MN 56464



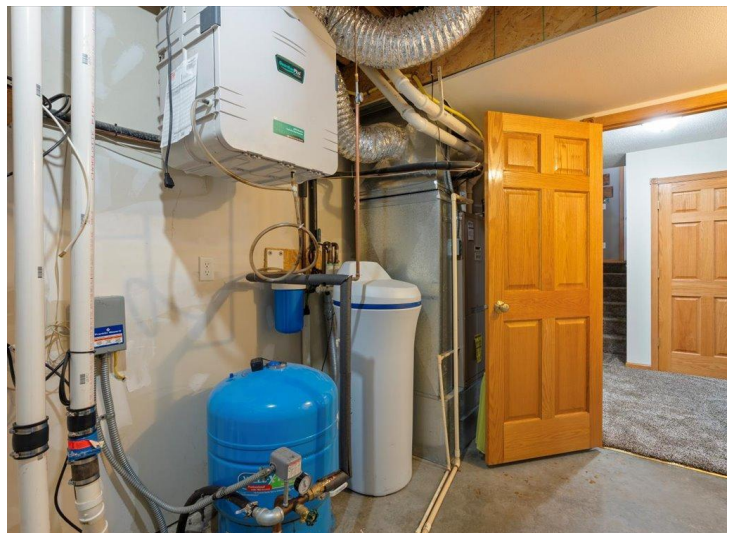


website: [www.AffinityRealEstate.com](http://www.AffinityRealEstate.com) | email: [info@affinityrealestate.com](mailto:info@affinityrealestate.com) | office: 218-237-3333 | fax: 218-237-3377



**\$499,900**  
 MLS 6781780 Residential  
 12483 135th Avenue  
 Menahga MN 56464





website: [www.AffinityRealEstate.com](http://www.AffinityRealEstate.com) | email: [info@affinityrealestate.com](mailto:info@affinityrealestate.com) | office: 218-237-3333 | fax: 218-237-3377

**Affinity**  
REAL ESTATE INC

**\$499,900**  
MLS 6781780 Residential  
12483 135th Avenue  
Menahga MN 56464





SHOP HEAT:  
IN-FLOOR ELECTRIC  
&  
FORCED AIR PROPANE



SHOP  
FURNACE



SHOP  
BATHROOM



website: [www.AffinityRealEstate.com](http://www.AffinityRealEstate.com) | email: [info@affinityrealestate.com](mailto:info@affinityrealestate.com) | office: 218-237-3333 | fax: 218-237-3377



**\$499,900**  
MLS 6781780 Residential  
12483 135th Avenue  
Menahga MN 56464





website: [www.AffinityRealEstate.com](http://www.AffinityRealEstate.com) | email: [info@affinityrealestate.com](mailto:info@affinityrealestate.com) | office: 218-237-3333 | fax: 218-237-3377



**\$499,900**  
 MLS 6781780 Residential  
 12483 135th Avenue  
 Menahga MN 56464





website: [www.AffinityRealEstate.com](http://www.AffinityRealEstate.com) | email: [info@affinityrealestate.com](mailto:info@affinityrealestate.com) | office: 218-237-3333 | fax: 218-237-3377



**\$499,900**  
 MLS 6781780 Residential  
 12483 135th Avenue  
 Menahga MN 56464