



MLS 6781965 Residential

**\$325,000**

1,552 sq ft  
3 bedrooms  
2 baths

6285 Clearwater Road  
Baxter MN 56425

Status: Active

**Description:**

Nestled perfectly in the heart of Baxter and the greater Brainerd Lakes Area, this immaculate 3-bedroom, 2-bathroom home offers the ease of true main-level living with absolutely zero steps. From the moment you walk in, you'll appreciate how meticulously maintained, clean, and move-in ready every square foot is. The functional floor plan flows effortlessly out to a fantastic backyard, providing a peaceful retreat to unwind at the end of the day. Location is everything, and this property puts you just minutes from premium local trail systems, dining, and shopping. If you've been searching for an accessible, low-maintenance home that checks all the boxes, put this one at the top of your list!

**Additional Details:**

|                        |                  |
|------------------------|------------------|
| Year Built             | 2004             |
| Lot Acres              | 0.38             |
| Lot Dimensions         | 99x182x74x138x47 |
| Garage Stalls          | 2                |
| School District        | 181              |
| Taxes                  | \$2,762          |
| Taxes with Assessments | \$2,762          |
| Tax Year               | 2025             |

**Additional Features:**

**Fuel:** Electric, Natural Gas **Heat:** Forced Air

**Driving Directions:**

From Baxter, north on Hwy 371 to left toward Edgewood Drive, right at the 1st cross street onto Edgewood Drive, turn left onto Clearwater Road to property.



Listed By:  
Edina Realty, Inc.

Affinity Real Estate Inc. participates in the Regional Multiple Listing Service of Minnesota, Inc Broker Reciprocity (sm) program, allowing us to display other broker's listings on our website. All properties are subject to prior sale, change or withdrawal.



**Call Affinity Real Estate**

**218-237-3333**

**info@affinityrealestate.com**



**Affinity Real Estate - 600 Park Avenue South - Park Rapids MN 56470**





website: [www.AffinityRealEstate.com](http://www.AffinityRealEstate.com) | email: [info@affinityrealestate.com](mailto:info@affinityrealestate.com) | office: 218-237-3333 | fax: 218-237-3377

**Affinity**  
REAL ESTATE INC

**\$325,000**  
MLS 6781965 Residential  
6285 Clearwater Road  
Baxter MN 56425



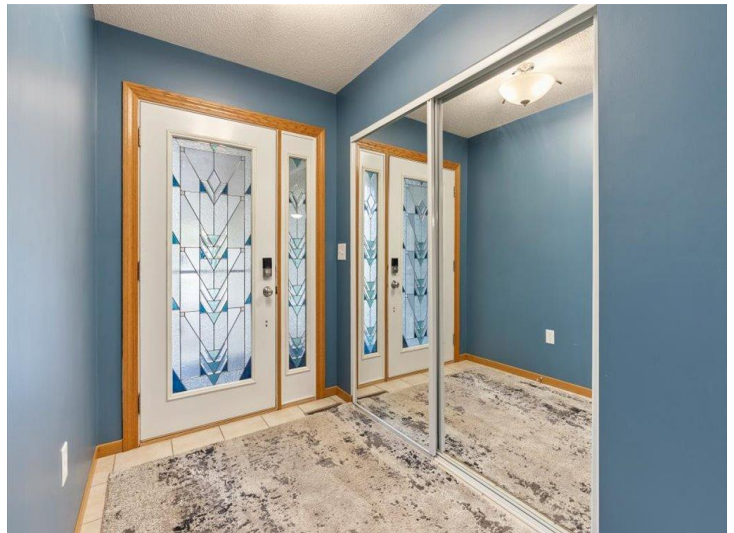
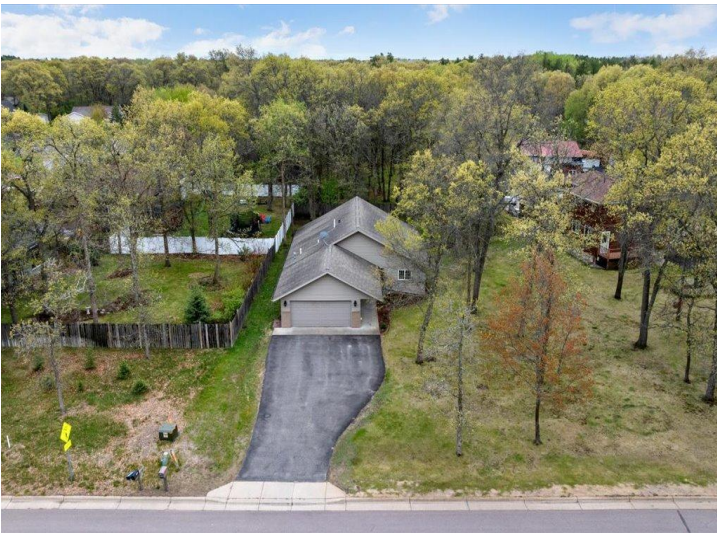


website: [www.AffinityRealEstate.com](http://www.AffinityRealEstate.com) | email: [info@affinityrealestate.com](mailto:info@affinityrealestate.com) | office: 218-237-3333 | fax:218-237-3377

**Affinity**  
REAL ESTATE INC

**\$325,000**  
MLS 6781965 Residential  
6285 Clearwater Road  
Baxter MN 56425





website: [www.AffinityRealEstate.com](http://www.AffinityRealEstate.com) | email: [info@affinityrealestate.com](mailto:info@affinityrealestate.com) | office: 218-237-3333 | fax:218-237-3377



**\$325,000**  
MLS 6781965 Residential  
6285 Clearwater Road  
Baxter MN 56425





website: [www.AffinityRealEstate.com](http://www.AffinityRealEstate.com) | email: [info@affinityrealestate.com](mailto:info@affinityrealestate.com) | office: 218-237-3333 | fax: 218-237-3377



**\$325,000**  
MLS 6781965 Residential  
6285 Clearwater Road  
Baxter MN 56425





website: [www.AffinityRealEstate.com](http://www.AffinityRealEstate.com) | email: [info@affinityrealestate.com](mailto:info@affinityrealestate.com) | office: 218-237-3333 | fax:218-237-3377



**\$325,000**  
MLS 6781965 Residential  
6285 Clearwater Road  
Baxter MN 56425