



MLS 6781972 Residential

**\$399,900**

2,653 sq ft  
4 bedrooms  
3 baths

3812 State Highway 84  
Longville MN 56655

Status: Active

#### Description:

Discover peaceful country living with this beautifully maintained 4-bedroom, 3-bath home, ideally located just south of Longville with quick access to State Hwy 84. and all the local amenities. Set on a gently rolling 2.5-acre lot, this property offers a stunning mix of mature pine and hardwoods, a manicured lawn, and serene views of an adjacent pond. A crushed asphalt driveway welcomes you home, leading to a spacious 3-stall heated garage and a charming covered front porch. Step inside to a bright, open-concept living space featuring vaulted ceilings and abundant natural light from oversized windows. The large living and dining areas flow seamlessly into a cozy 4-season sunroom, expansive deck, and a beautifully stamped and stained concrete patio—perfect for relaxing or entertaining while enjoying peaceful outdoor views.

The main floor offers true one-level living with a spacious primary suite featuring a newly remodeled private bath, a second bedroom, and convenient main-floor laundry. The finished lower level includes two additional bedrooms with egress windows and a large family room—ideal for guests, kids, or a separate entertaining space. Additional features include central A/C, a well-designed layout, and tasteful updates including freshly painted interior throughout. Don't miss the opportunity to own this tranquil slice of the Northwoods—perfect as a year-round home or a peaceful weekend getaway. Be sure to check out the video tour!

#### Additional Details:

Year Built	2005
Lot Acres	2.5
Lot Dimensions	250x435
Garage Stalls	3
School District	118
Taxes	\$1,474
Taxes with Assessments	\$1,540
Tax Year	2025

#### Additional Features:

**Basement:** Egress Window(s), Finished, Concrete **Fuel:** Electric, Propane **Garage:** 3 **Heat:** Dual, Forced Air **Sewer:** Mound Septic, Private Sewer  
**Water:** Submersible - 4 Inch, Drilled, Private **Air Conditioning:** Central Air



Listed By:  
Kurilla Real Estate LTD  
on 84 to property

Affinity Real Estate Inc. participates in the Regional Multiple Listing Service of Minnesota, Inc Broker Reciprocity (sm) program, allowing us to display other broker's listings on our website. All properties are subject to prior sale, change or withdrawal.



**Call Affinity Real Estate**

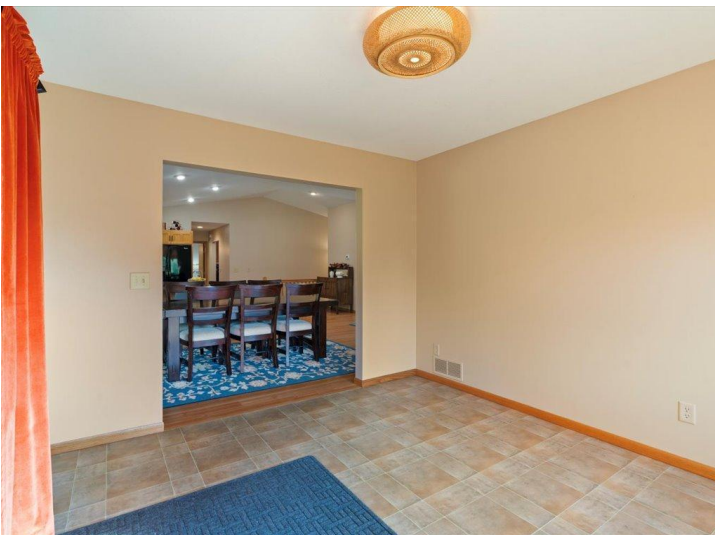
**218-237-3333**

**info@affinityrealestate.com**



**Affinity Real Estate - 600 Park Avenue South - Park Rapids MN 56470**





website: [www.AffinityRealEstate.com](http://www.AffinityRealEstate.com) | email: [info@affinityrealestate.com](mailto:info@affinityrealestate.com) | office: 218-237-3333 | fax: 218-237-3377

**Affinity**  
REAL ESTATE INC

**\$399,900**  
MLS 6781972 Residential  
3812 State Highway 84  
Longville MN 56655



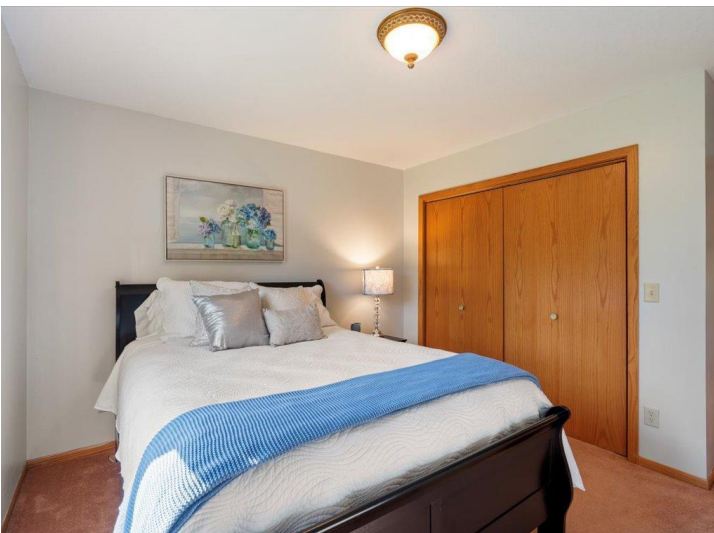


website: [www.AffinityRealEstate.com](http://www.AffinityRealEstate.com) | email: [info@affinityrealestate.com](mailto:info@affinityrealestate.com) | office: 218-237-3333 | fax: 218-237-3377

**Affinity**  
REAL ESTATE INC

**\$399,900**  
MLS 6781972 Residential  
3812 State Highway 84  
Longville MN 56655





website: [www.AffinityRealEstate.com](http://www.AffinityRealEstate.com) | email: [info@affinityrealestate.com](mailto:info@affinityrealestate.com) | office: 218-237-3333 | fax: 218-237-3377



**\$399,900**  
MLS 6781972 Residential  
3812 State Highway 84  
Longville MN 56655



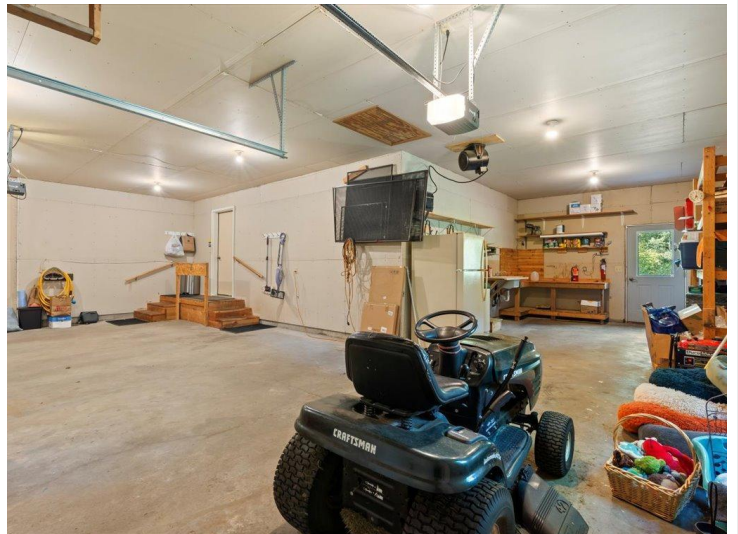


website: [www.AffinityRealEstate.com](http://www.AffinityRealEstate.com) | email: [info@affinityrealestate.com](mailto:info@affinityrealestate.com) | office: 218-237-3333 | fax: 218-237-3377



**\$399,900**  
 MLS 6781972 Residential  
 3812 State Highway 84  
 Longville MN 56655





website: [www.AffinityRealEstate.com](http://www.AffinityRealEstate.com) | email: [info@affinityrealestate.com](mailto:info@affinityrealestate.com) | office: 218-237-3333 | fax: 218-237-3377



**\$399,900**  
 MLS 6781972 Residential  
 3812 State Highway 84  
 Longville MN 56655





website: [www.AffinityRealEstate.com](http://www.AffinityRealEstate.com) | email: [info@affinityrealestate.com](mailto:info@affinityrealestate.com) | office: 218-237-3333 | fax: 218-237-3377



**\$399,900**  
 MLS 6781972 Residential  
 3812 State Highway 84  
 Longville MN 56655





website: [www.AffinityRealEstate.com](http://www.AffinityRealEstate.com) | email: [info@affinityrealestate.com](mailto:info@affinityrealestate.com) | office: 218-237-3333 | fax: 218-237-3377

**Affinity**  
REAL ESTATE INC

**\$399,900**  
MLS 6781972 Residential  
3812 State Highway 84  
Longville MN 56655





website: [www.AffinityRealEstate.com](http://www.AffinityRealEstate.com) | email: [info@affinityrealestate.com](mailto:info@affinityrealestate.com) | office: 218-237-3333 | fax:218-237-3377



**\$399,900**

MLS 6781972 Residential  
3812 State Highway 84  
Longville MN 56655