



MLS 6782031 Land

\$45,000

5 Acres
Raw Land

40xxx Placid Drive
Dent MN 56528

Status: Pending

Description:

5 Acre backlot: Pickerel Lake West of Dent just off Hwy #108. No restrictive covenants. Plenty of room for your storage building, new home, or camping site. Certificate of survey on file.

Additional Details:

Lot Acres	5
Lot Dimensions	irregular
School District	549
Taxes	(unreported)
Taxes with Assessments	(unreported)
Tax Year	2025

Additional Features:

Driving Directions:

from Dent: 2 miles West on Hwy 108, left on Placid Dr, follow signs.



Listed By:
Coldwell Banker Preferred Partners

Affinity Real Estate Inc. participates in the Regional Multiple Listing Service of Minnesota, Inc Broker Reciprocity (sm) program, allowing us to display other broker's listings on our website. All properties are subject to prior sale, change or withdrawal.



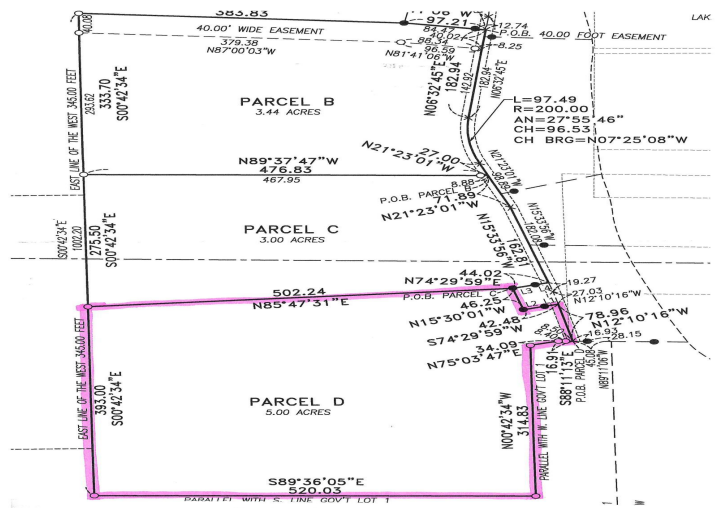
Call Affinity Real Estate

218-237-3333

info@affinityrealestate.com



Affinity Real Estate - 600 Park Avenue South - Park Rapids MN 56470



website: www.AffinityRealEstate.com | email: info@affinityrealestate.com | office: 218-237-3333 | fax: 218-237-3377



\$45,000
 MLS 6782031 Land
 40xxx Placid Drive
 Dent MN 56528