



MLS 6782172 Residential

**\$264,900**

1,840 sq ft  
2 bedrooms  
2 baths

15281 Clearview Lane  
Brainerd MN 56401

Status: Pending

#### Description:

Welcome to this TURN-KEY, Beautifully Maintained 2-bedroom, 2-bath Townhome, perfectly nestled on the EDGE of TOWN in a Peaceful, well-managed association. Enjoy the best of both worlds—Quiet Natural Surroundings and Convenient Access to town amenities.

Step inside to a Welcoming & Light, Open-Concept Feel that flows from the Functional Kitchen, equipped with updated appliances, to the Cathedral Ceiling Living Room -ideal for everyday living and entertaining. NEW Carpet, Water Heater, Light Fixtures & Paint, and the Roof is only 3 years old! With Both Bedrooms & Laundry on the upper level, the Spacious Owner's Suite features a Large Walk-in Closet and plenty of Room to Relax.

Enjoy serene mornings and tranquil evenings on the Back Patio, which offers Nature Views & Mature Trees. The Oversized, Insulated Garage provides Ample Storage and year-round convenience.

Outdoor enthusiasts will love the Surrounding Walking Trails, perfect for staying active and enjoying the outdoors. This home offers a Warm, Inviting Atmosphere with Thoughtful Updates and a layout that fits your lifestyle. Come see for yourself—Nature, Comfort, and Community await!

#### Additional Details:

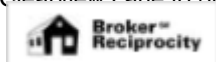
Year Built	2006
Lot Acres	0.04
Lot Dimensions	55 x 30
Garage Stalls	2
School District	181
Taxes	\$2,829
Taxes with Assessments	\$2,854
Tax Year	2025

#### Additional Features:

**Fuel:** Natural Gas **Heat:** Forced Air

#### Driving Directions:

From Hwy 210 (at Walgreens) go North on Riverside Drive to Left on Beaver Dam Road to Right on Northtown Street to Left on Clearview Lane to property on Left.



Listed By:  
Weichert REALTORS Tower Properties

Affinity Real Estate Inc. participates in the Regional Multiple Listing Service of Minnesota, Inc Broker Reciprocity (sm) program, allowing us to display other broker's listings on our website. All properties are subject to prior sale, change or withdrawal.



**Call Affinity Real Estate**

**218-237-3333**

**info@affinityrealestate.com**



**Affinity Real Estate - 600 Park Avenue South - Park Rapids MN 56470**





website: [www.AffinityRealEstate.com](http://www.AffinityRealEstate.com) | email: [info@affinityrealestate.com](mailto:info@affinityrealestate.com) | office: 218-237-3333 | fax: 218-237-3377

**Affinity**  
REAL ESTATE INC

**\$264,900**  
MLS 6782172 Residential  
15281 Clearview Lane  
Brainerd MN 56401





website: [www.AffinityRealEstate.com](http://www.AffinityRealEstate.com) | email: [info@affinityrealestate.com](mailto:info@affinityrealestate.com) | office: 218-237-3333 | fax: 218-237-3377

**Affinity**  
REAL ESTATE INC

**\$264,900**  
MLS 6782172 Residential  
15281 Clearview Lane  
Brainerd MN 56401





website: [www.AffinityRealEstate.com](http://www.AffinityRealEstate.com) | email: [info@affinityrealestate.com](mailto:info@affinityrealestate.com) | office: 218-237-3333 | fax: 218-237-3377



**\$264,900**  
 MLS 6782172 Residential  
 15281 Clearview Lane  
 Brainerd MN 56401



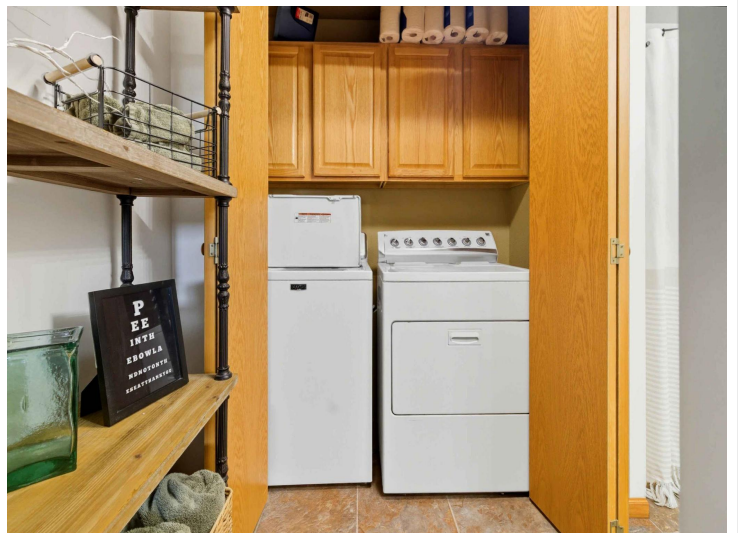
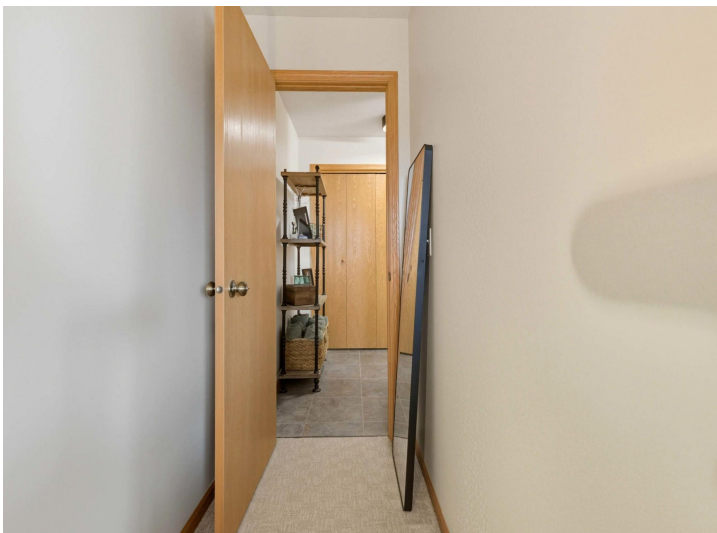
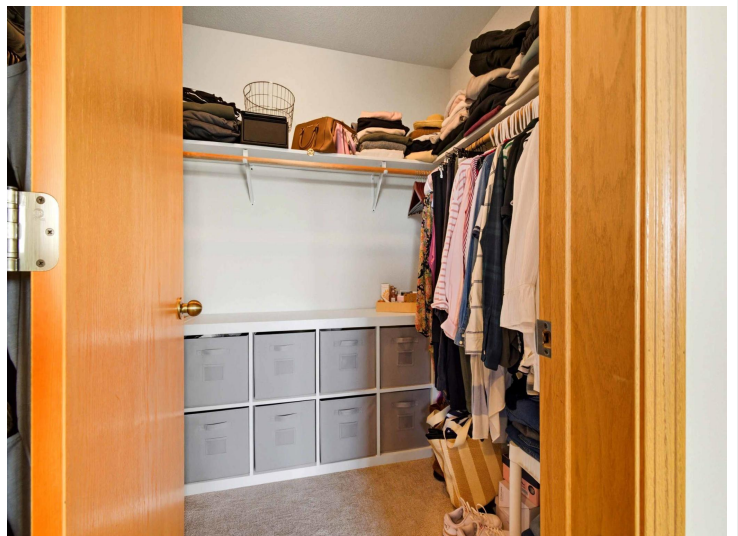
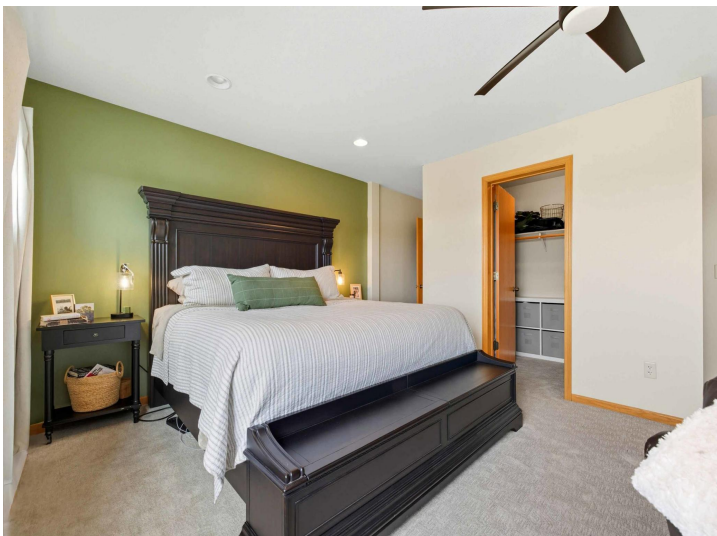


website: [www.AffinityRealEstate.com](http://www.AffinityRealEstate.com) | email: [info@affinityrealestate.com](mailto:info@affinityrealestate.com) | office: 218-237-3333 | fax: 218-237-3377

**Affinity**  
REAL ESTATE INC

**\$264,900**  
MLS 6782172 Residential  
15281 Clearview Lane  
Brainerd MN 56401





website: [www.AffinityRealEstate.com](http://www.AffinityRealEstate.com) | email: [info@affinityrealestate.com](mailto:info@affinityrealestate.com) | office: 218-237-3333 | fax: 218-237-3377



**\$264,900**  
 MLS 6782172 Residential  
 15281 Clearview Lane  
 Brainerd MN 56401



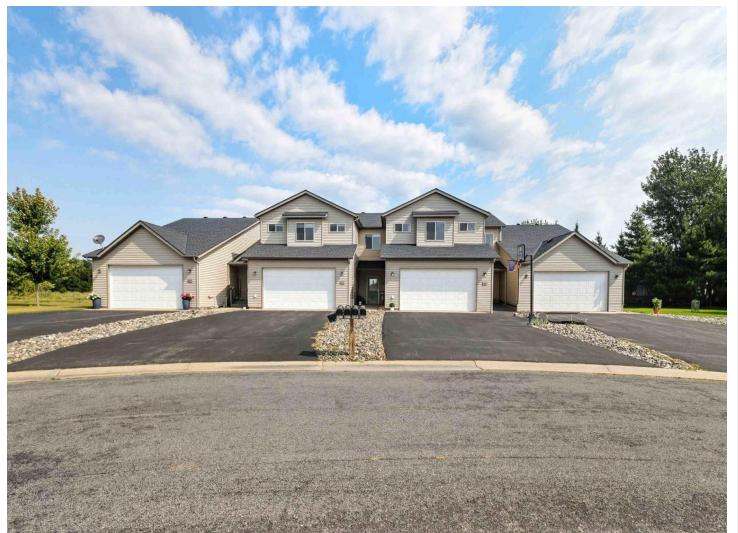
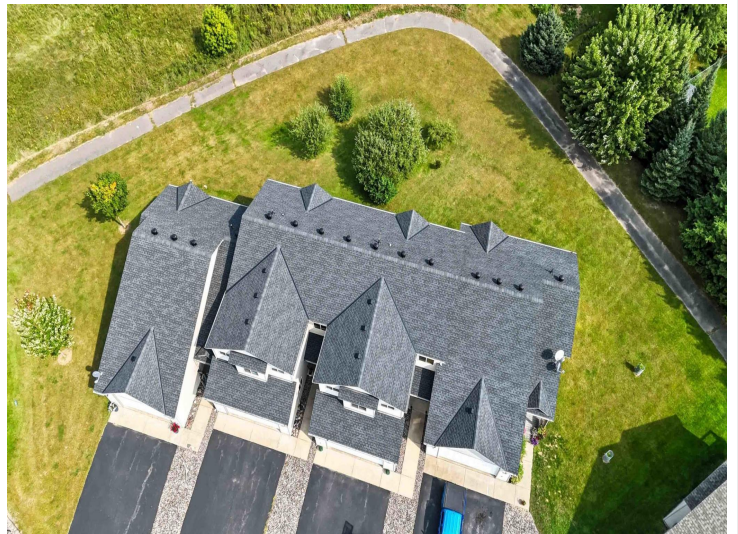


website: [www.AffinityRealEstate.com](http://www.AffinityRealEstate.com) | email: [info@affinityrealestate.com](mailto:info@affinityrealestate.com) | office: 218-237-3333 | fax: 218-237-3377

**Affinity**  
REAL ESTATE INC

**\$264,900**  
MLS 6782172 Residential  
15281 Clearview Lane  
Brainerd MN 56401





website: [www.AffinityRealEstate.com](http://www.AffinityRealEstate.com) | email: [info@affinityrealestate.com](mailto:info@affinityrealestate.com) | office: 218-237-3333 | fax: 218-237-3377



**\$264,900**  
MLS 6782172 Residential  
15281 Clearview Lane  
Brainerd MN 56401



website: [www.AffinityRealEstate.com](http://www.AffinityRealEstate.com) | email: [info@affinityrealestate.com](mailto:info@affinityrealestate.com) | office: 218-237-3333 | fax:218-237-3377



**\$264,900**

MLS 6782172 Residential  
15281 Clearview Lane  
Brainerd MN 56401